

Datasheet for ABIN7131078

anti-SLC12A1 antibody**3** Images[Go to Product page](#)

Overview

Quantity:	100 µL
Target:	SLC12A1
Reactivity:	Human
Host:	Rabbit
Clonality:	Polyclonal
Conjugate:	This SLC12A1 antibody is un-conjugated
Application:	Western Blotting (WB), Immunohistochemistry (IHC), ELISA

Product Details

Immunogen:	Fusion protein of Human SLC12A1
Isotype:	IgG
Cross-Reactivity:	Human, Mouse, Rat
Purification:	Antigen affinity purification

Target Details

Target:	SLC12A1
Alternative Name:	SLC12A1 (SLC12A1 Products)
Background:	Background: This gene encodes a kidney-specific sodium-potassium-chloride cotransporter that is expressed on the luminal membrane of renal epithelial cells of the thick ascending limb of Henle's loop and the macula densa. It plays a key role in concentrating urine and accounts for most of the NaCl resorption. It is sensitive to such diuretics as furosemide and bumetanide.

Target Details

Some Bartter-like syndromes result from defects in this gene. Alternative splicing results in multiple transcript variants encoding distinct isoforms. Additional splice variants have been described but their biological validity in humans has not been experimentally proven.

Aliases: BSC1 antibody, Bumetanide sensitive sodium 3 antibody, Bumetanide-sensitive sodium-(potassium)-chloride cotransporter 2 antibody, Kidney specific Na K Cl symporter antibody, Kidney-specific Na-K-Cl symporter antibody, MGC48843 antibody, Na K 2Cl cotransporter antibody, NKCC2 antibody, potassiumchloride cotransporter 2 antibody, S12A1_HUMAN antibody, Slc12a1 antibody, sodium potassium chloride cotransporter 2 antibody, solute carrier family 12 (sodium/potassium/chloride transporters) antibody, Solute carrier family 12 member 1 antibody

UniProt: [Q13621](#)

Application Details

Application Notes: ELISA:1:1000-1:2000, WB:1:200-1:1000, IHC:1:25-1:100,

Restrictions: For Research Use only

Handling

Format: Liquid

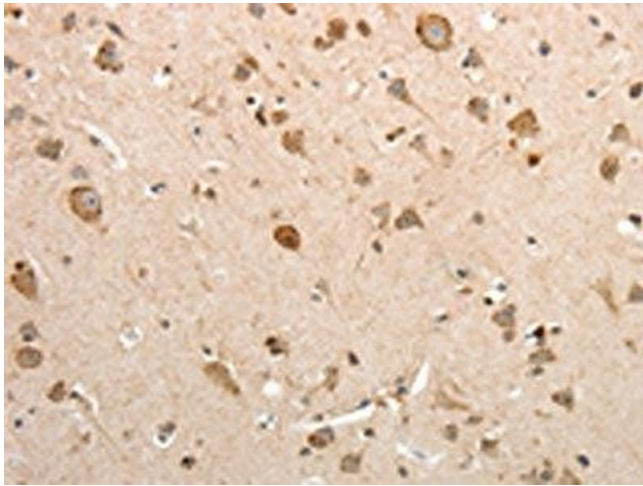
Buffer: -20 °C, pH 7.4 PBS, 0.05 % Sodium azide, 40 % Glycerol

Preservative: Sodium azide

Precaution of Use: This product contains Sodium azide: a POISONOUS AND HAZARDOUS SUBSTANCE which should be handled by trained staff only.

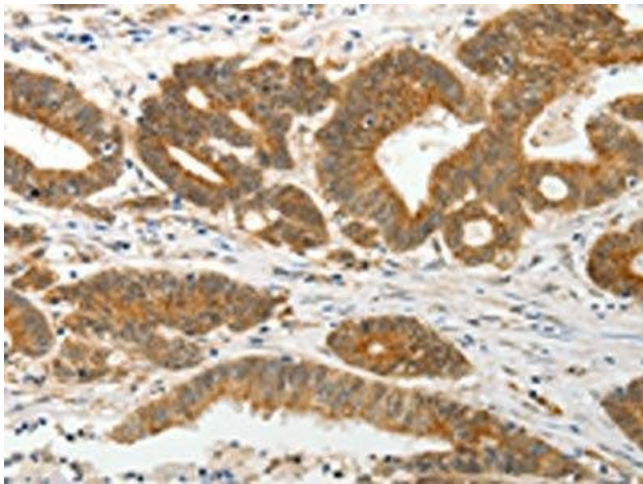
Storage: -20 °C, -80 °C

Storage Comment: Upon receipt, store at -20°C or -80°C. Avoid repeated freeze.



Immunohistochemistry

Image 1. The image on the left is immunohistochemistry of paraffin-embedded Human brain tissue using ABIN7131078(SLC12A1 Antibody) at dilution 1/15, on the right is treated with fusion protein. (Original magnification: x200)



Immunohistochemistry

Image 2. The image on the left is immunohistochemistry of paraffin-embedded Human colon cancer tissue using ABIN7131078(SLC12A1 Antibody) at dilution 1/15, on the right is treated with fusion protein. (Original magnification: x200)



Western Blotting

Image 3. Gel: 12 % SDS-PAGE, Lysate: 40 µg, Lane: Human fetal kidney tissue, Primary antibody: ABIN7131078(SLC12A1 Antibody) at dilution 1/200, Secondary antibody: Goat anti rabbit IgG at 1/8000 dilution, Exposure time: 1 minute