

Datasheet for ABIN7131150

anti-SPAG8 antibody[Go to Product page](#)**1** Image

Overview

Quantity:	100 µL
Target:	SPAG8
Reactivity:	Human
Host:	Rabbit
Clonality:	Polyclonal
Conjugate:	This SPAG8 antibody is un-conjugated
Application:	ELISA, Immunohistochemistry (IHC)

Product Details

Immunogen:	Fusion protein of Human SPAG8
Isotype:	IgG
Cross-Reactivity:	Human
Purification:	Antigen affinity purification

Target Details

Target:	SPAG8
Alternative Name:	SPAG8 (SPAG8 Products)
Background:	Background: The correlation of anti-sperm antibodies with cases of unexplained infertility implicates a role for these antibodies in blocking fertilization. Improved diagnosis and treatment of immunologic infertility, as well as identification of proteins for targeted contraception, are dependent on the identification and characterization of relevant sperm

Target Details

antigens. The protein encoded by this gene is recognized by sperm agglutinating antibodies from an infertile woman. This protein is localized in germ cells of the testis at all stages of spermatogenesis and is localized to the acrosomal region of mature spermatozoa. This protein interacts with ACT (activator of CREM in testis) and may play a role in CREM (cAMP response element modulator)-ACT-mediated gene transcription during spermatogenesis. This protein may also play a role in spermatogenesis by regulating microtubule formation and cell division. Alternatively spliced variants that encode different protein isoforms have been described but the full-length sequences of only two have been determined.

Aliases: BS 84 antibody, CILD28 antibody, HSD 1 antibody, HSD-1 antibody, HSD1 antibody, hSMP1 antibody, MGC26201 antibody, MH SPAG8 antibody, OTTHUMP00000021352 antibody, OTTMUSP00000032209 antibody, SMP-1 antibody, SMP1 antibody, SPAG3 antibody, SPAG8 antibody, SPAG8_HUMAN antibody, Sperm associated antigen 8 antibody, Sperm associated antigen 8 like protein antibody, Sperm membrane protein 1 antibody, Sperm membrane protein BS-84 antibody, Sperm-associated antigen 8 antibody, Testicular tissue protein Li 177 antibody

UniProt: [Q99932](#)

Application Details

Application Notes: ELISA:1:1000-1:5000, IHC:1:25-1:100,

Restrictions: For Research Use only

Handling

Format: Liquid

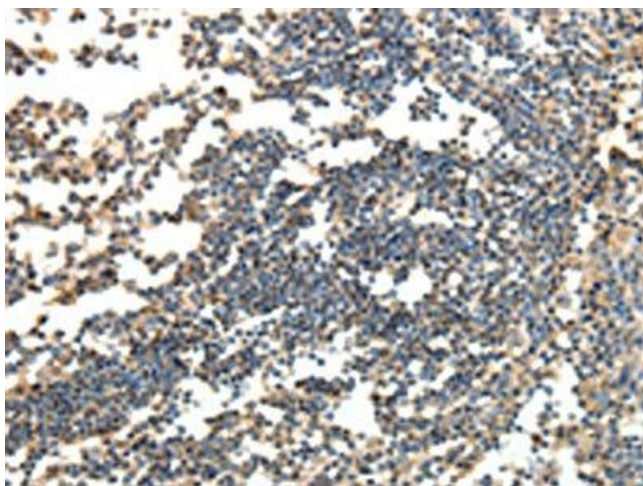
Buffer: -20 °C, pH 7.4 PBS, 0.05 % Sodium azide, 40 % Glycerol

Preservative: Sodium azide

Precaution of Use: This product contains Sodium azide: a POISONOUS AND HAZARDOUS SUBSTANCE which should be handled by trained staff only.

Storage: -20 °C, -80 °C

Storage Comment: Upon receipt, store at -20°C or -80°C. Avoid repeated freeze.



Immunohistochemistry

Image 1. The image on the left is immunohistochemistry of paraffin-embedded Human tonsil tissue using ABIN7131150(SPAG8 Antibody) at dilution 1/30, on the right is treated with fusion protein. (Original magnification: x200)