

Datasheet for ABIN7131154  
**anti-SPATA13 antibody**

## 3 Images

[Go to Product page](#)

## Overview

Quantity:	100 µL
Target:	SPATA13
Reactivity:	Human
Host:	Rabbit
Clonality:	Polyclonal
Conjugate:	This SPATA13 antibody is un-conjugated
Application:	Western Blotting (WB), ELISA, Immunohistochemistry (IHC)

## Product Details

Immunogen:	Fusion protein of Human SPATA13
Isotype:	IgG
Cross-Reactivity:	Human, Mouse
Purification:	Antigen affinity purification

## Target Details

Target:	SPATA13
Alternative Name:	SPATA13 ( <a href="#">SPATA13 Products</a> )
Background:	Background: Acts as guanine nucleotide exchange factor (GEF) for RHOA, RAC1 and CDC42 GTPases. Regulates cell migration and adhesion assembly and disassembly through a RAC1, PI3K, RHOA and AKT1-dependent mechanism. Increases both RAC1 and CDC42 activity, but decreases the amount of active RHOA. Required for MMP9 up-regulation via the JNK signaling

## Target Details

pathway in colorectal tumor cells. Involved in tumor angiogenesis and may play a role in intestinal adenoma formation and tumor progression. Both the ABR and the SH3 domains contribute to maintaining the protein in an inhibited conformation by associating with the C-terminal tail. Binding of these domains to the C-terminal tail inhibits the activity of the protein by blocking a region that is required for its GEF activity.

Aliases: APC-stimulated guanine nucleotide exchange factor 2 antibody, ARHGEF29 antibody, Asef2 antibody, FLJ31208 antibody, RP11-307N16.3 antibody, Spata13 antibody, Spermatogenesis-associated protein 13 antibody, SPT13\_HUMAN antibody

UniProt: [Q96N96](#)

## Application Details

Application Notes: ELISA:1:1000-1:2000, WB:1:200-1:1000, IHC:1:25-1:100,

Restrictions: For Research Use only

## Handling

Format: Liquid

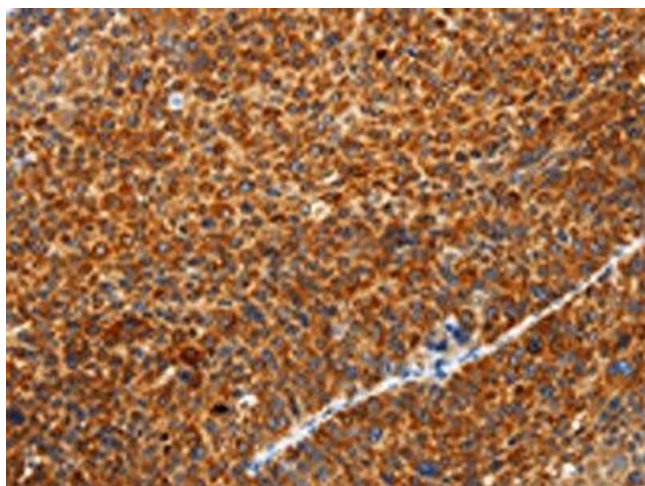
Buffer: -20 °C, pH 7.4 PBS, 0.05 % Sodium azide, 40 % Glycerol

Preservative: Sodium azide

Precaution of Use: This product contains Sodium azide: a POISONOUS AND HAZARDOUS SUBSTANCE which should be handled by trained staff only.

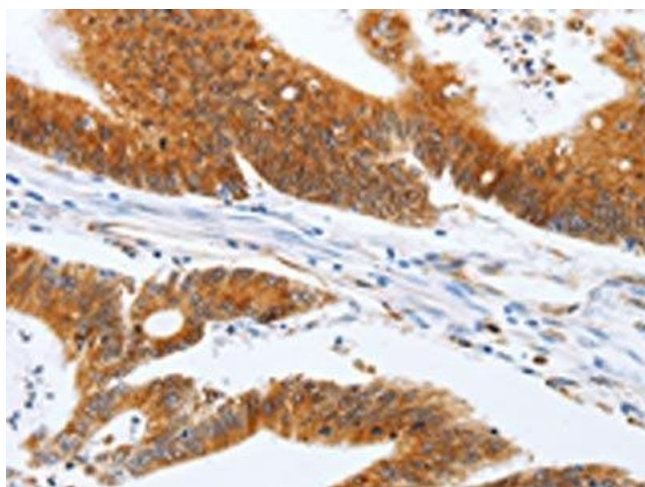
Storage: -20 °C, -80 °C

Storage Comment: Upon receipt, store at -20°C or -80°C. Avoid repeated freeze.



#### Immunohistochemistry

**Image 1.** The image on the left is immunohistochemistry of paraffin-embedded Human liver cancer tissue using ABIN7131154(SPATA13 Antibody) at dilution 1/20, on the right is treated with fusion protein. (Original magnification: x200)



#### Immunohistochemistry

**Image 2.** The image on the left is immunohistochemistry of paraffin-embedded Human colon cancer tissue using ABIN7131154(SPATA13 Antibody) at dilution 1/20, on the right is treated with fusion protein. (Original magnification: x200)



#### Western Blotting

**Image 3.** Gel: 8 % SDS-PAGE, Lysate: 40 µg, Lane: Hela cells, Primary antibody: ABIN7131154(SPATA13 Antibody) at dilution 1/200, Secondary antibody: Goat anti rabbit IgG at 1/8000 dilution, Exposure time: 5 seconds