



[Go to Product page](#)

Datasheet for ABIN7131158
anti-SPATA17 antibody

3 Images

Overview

Quantity:	100 µL
Target:	SPATA17
Reactivity:	Human
Host:	Rabbit
Clonality:	Polyclonal
Conjugate:	This SPATA17 antibody is un-conjugated
Application:	Western Blotting (WB), ELISA, Immunohistochemistry (IHC)

Product Details

Immunogen:	Fusion protein of Human SPATA17
Isotype:	IgG
Cross-Reactivity:	Human
Purification:	Antigen affinity purification

Target Details

Target:	SPATA17
Alternative Name:	SPATA17 (SPATA17 Products)
Background:	Background: Spata17 gene, which called MSRG11, by digital differential display of ESTs found only in testis. The deduced 292-amino acid protein was considered to be a member of the family of calmodulin (CaM)-binding proteins because it contained 3 short CaM-binding motifs containing conserved ile and gln residues (IQ motif). Spata17 protein was most abundant in the

Target Details

cytoplasm of round spermatids and elongating spermatids within seminiferous tubules of the adult testis. Expression gradually decreased in the manipulated testis of animals that underwent experimental unilateral cryptorchidism. Transient transfection experiments with a Spata17 expression construct in cultured spermatogonia GC-1 cells indicated that Spata17 accelerated apoptosis in a dose-dependent manner.

Aliases: SPATA17 antibody, Spermatogenesis-associated protein 17 antibody

UniProt: [Q96L03](#)

Application Details

Application Notes: ELISA:1:1000-1:5000, WB:1:200-1:1000, IHC:1:10-1:50,

Restrictions: For Research Use only

Handling

Format: Liquid

Buffer: -20 °C, pH 7.4 PBS, 0.05 % Sodium azide, 40 % Glycerol

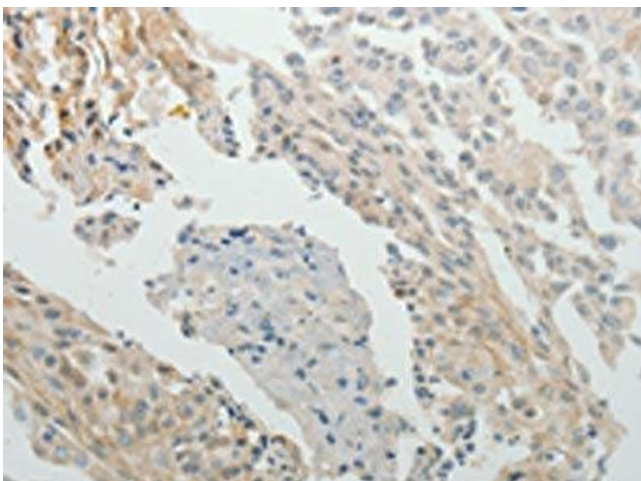
Preservative: Sodium azide

Precaution of Use: This product contains Sodium azide: a POISONOUS AND HAZARDOUS SUBSTANCE which should be handled by trained staff only.

Storage: -20 °C,-80 °C

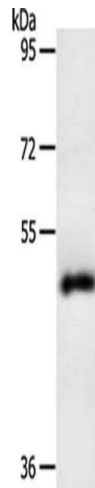
Storage Comment: Upon receipt, store at -20°C or -80°C. Avoid repeated freeze.

Images



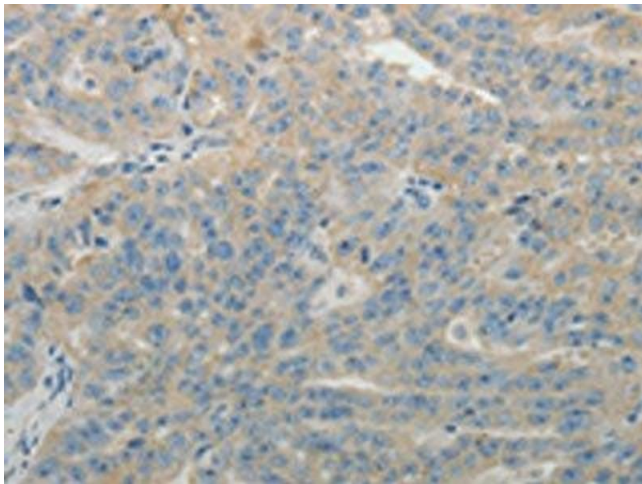
Immunohistochemistry

Image 1. The image on the left is immunohistochemistry of paraffin-embedded Human cervical cancer tissue using ABIN7131158(SPATA17 Antibody) at dilution 1/15, on the right is treated with fusion protein. (Original magnification: x200)



Western Blotting

Image 2. Gel: 10 % SDS-PAGE, Lysate: 40 µg, Lane: Human liver cancer tissue, Primary antibody: ABIN7131158(SPATA17 Antibody) at dilution 1/200, Secondary antibody: Goat anti rabbit IgG at 1/8000 dilution, Exposure time: 10 minutes



Immunohistochemistry

Image 3. The image on the left is immunohistochemistry of paraffin-embedded Human ovarian cancer tissue using ABIN7131158(SPATA17 Antibody) at dilution 1/15, on the right is treated with fusion protein. (Original magnification: x200)