

Datasheet for ABIN7131203

anti-STAG2 antibody**3** Images[Go to Product page](#)

Overview

Quantity:	100 µL
Target:	STAG2
Reactivity:	Human
Host:	Rabbit
Clonality:	Polyclonal
Conjugate:	This STAG2 antibody is un-conjugated
Application:	Western Blotting (WB), ELISA, Immunohistochemistry (IHC)

Product Details

Immunogen:	Fusion protein of Human STAG2
Isotype:	IgG
Cross-Reactivity:	Human, Mouse
Purification:	Antigen affinity purification

Target Details

Target:	STAG2
Alternative Name:	STAG2 (STAG2 Products)
Background:	Background: The protein encoded by this gene is a subunit of the cohesin complex, which regulates the separation of sister chromatids during cell division. Targeted inactivation of this gene results in chromatid cohesion defects and aneuploidy, suggesting that genetic disruption of cohesin is a cause of aneuploidy in human cancer. Alternatively spliced transcript variants

Target Details

encoding different isoforms have been found for this gene.

Aliases: bA51701.1 antibody, Cohesin Subunit SA 2 antibody, Cohesin subunit SA-2 antibody, DKFZp686P168 antibody, DKFZp781H1753 antibody, FLJ25871 antibody, SA 2 antibody, SA-2 antibody, SA2 antibody, SCC3 homolog 2 antibody, SCC3B antibody, STAG 2 antibody, stag2 antibody, STAG2_HUMAN antibody, Stromal antigen 2 antibody

UniProt: [Q8N3U4](#)

Pathways: [Stem Cell Maintenance](#)

Application Details

Application Notes: ELISA:1:1000-1:2000, WB:1:200-1:1000, IHC:1:25-1:100,

Restrictions: For Research Use only

Handling

Format: Liquid

Buffer: -20 °C, pH 7.4 PBS, 0.05 % Sodium azide, 40 % Glycerol

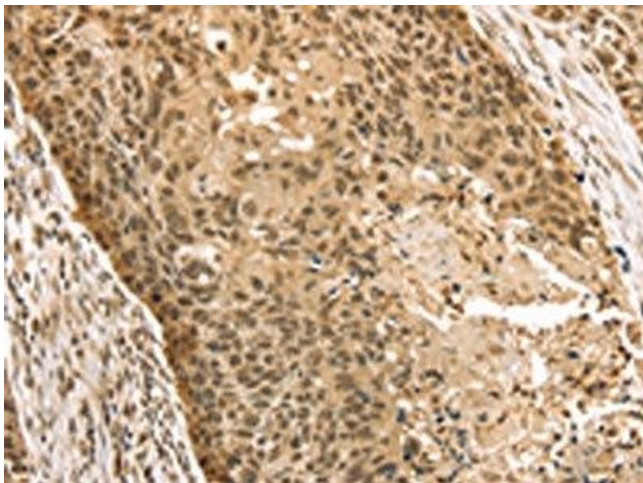
Preservative: Sodium azide

Precaution of Use: This product contains Sodium azide: a POISONOUS AND HAZARDOUS SUBSTANCE which should be handled by trained staff only.

Storage: -20 °C,-80 °C

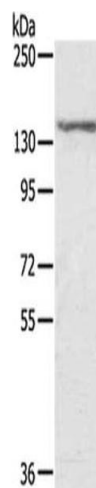
Storage Comment: Upon receipt, store at -20°C or -80°C. Avoid repeated freeze.

Images



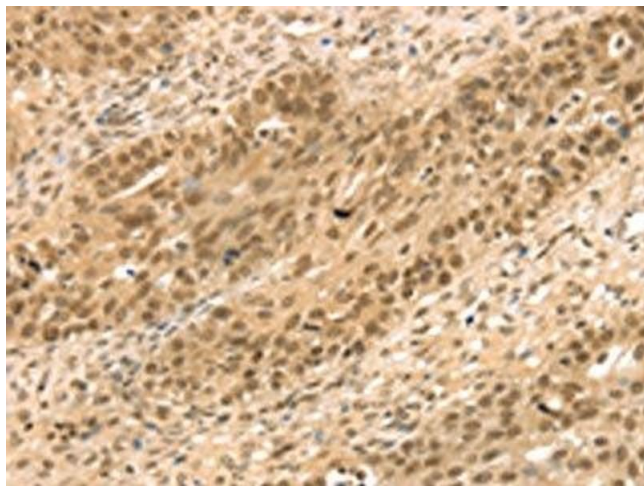
Immunohistochemistry

Image 1. The image on the left is immunohistochemistry of paraffin-embedded Human esophagus cancer tissue using ABIN7131203(STAG2 Antibody) at dilution 1/35, on the right is treated with fusion protein. (Original magnification: x200)



Western Blotting

Image 2. Gel: 6 % SDS-PAGE, Lysate: 40 µg, Lane: MCF7 cells, Primary antibody: ABIN7131203(STAG2 Antibody) at dilution 1/300, Secondary antibody: Goat anti rabbit IgG at 1/8000 dilution, Exposure time: 5 seconds



Immunohistochemistry

Image 3. The image on the left is immunohistochemistry of paraffin-embedded Human breast cancer tissue using ABIN7131203(STAG2 Antibody) at dilution 1/35, on the right is treated with fusion protein. (Original magnification: x200)