

## Datasheet for ABIN7131211

**anti-STARD8 antibody**[Go to Product page](#)

## 1 Image

## Overview

Quantity:	100 µL
Target:	STARD8
Reactivity:	Human
Host:	Rabbit
Clonality:	Polyclonal
Conjugate:	This STARD8 antibody is un-conjugated
Application:	ELISA, Immunohistochemistry (IHC)

## Product Details

Immunogen:	Fusion protein of Human STARD8
Isotype:	IgG
Cross-Reactivity:	Human, Mouse
Purification:	Antigen affinity purification

## Target Details

Target:	STARD8
Alternative Name:	STARD8 ( <a href="#">STARD8 Products</a> )
Background:	Background: This gene encodes a member of a subfamily of Rho GTPase activating proteins that contain a steroidogenic acute regulatory protein related lipid transfer domain. The encoded protein localizes to focal adhesions and may be involved in regulating cell morphology. This protein may also function as a tumor suppressor.

## Target Details

Aliases: STARD8 antibody, DLC3 antibody, KIAA0189 antibody, StAR-related lipid transfer protein 8 antibody, Deleted in liver cancer 3 protein antibody, DLC-3 antibody, START domain-containing protein 8 antibody, STARD8 antibody, START-GAP3 antibody

UniProt: [Q92502](#)

## Application Details

Application Notes: ELISA:1:2000-1:5000, IHC:1:25-1:100,

Restrictions: For Research Use only

## Handling

Format: Liquid

Buffer: -20 °C, pH 7.4 PBS, 0.05 % Sodium azide, 40 % Glycerol

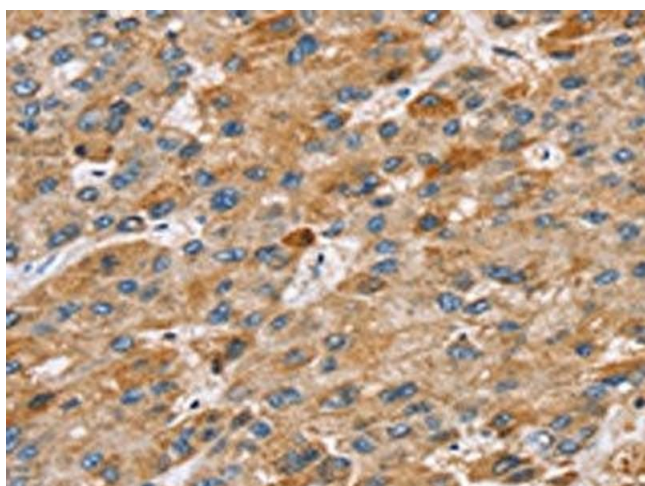
Preservative: Sodium azide

Precaution of Use: This product contains Sodium azide: a POISONOUS AND HAZARDOUS SUBSTANCE which should be handled by trained staff only.

Storage: -20 °C,-80 °C

Storage Comment: Upon receipt, store at -20°C or -80°C. Avoid repeated freeze.

## Images



### Immunohistochemistry

**Image 1.** The image on the left is immunohistochemistry of paraffin-embedded Human liver cancer tissue using ABIN7131211(STARD8 Antibody) at dilution 1/30, on the right is treated with fusion protein. (Original magnification: x200)