

Datasheet for ABIN7131338

anti-TGIF2LX antibody[Go to Product page](#)**1** Image

Overview

Quantity:	100 µL
Target:	TGIF2LX
Reactivity:	Human
Host:	Rabbit
Clonality:	Polyclonal
Conjugate:	This TGIF2LX antibody is un-conjugated
Application:	ELISA, Immunohistochemistry (IHC)

Product Details

Immunogen:	Fusion protein of Human TGIF2LX
Isotype:	IgG
Cross-Reactivity:	Human
Purification:	Antigen affinity purification

Target Details

Target:	TGIF2LX
Alternative Name:	TGIF2LX (TGIF2LX Products)
Background:	<p>Background: This gene encodes a member of the TALE/TGIF homeobox family of transcription factors. Testis-specific expression suggests that this gene may play a role in spermatogenesis.</p> <p>A homolog of this gene lies within the male specific region of chromosome Y, in a block of sequence that is thought to be the result of a large X-to-Y transposition.</p>

Target Details

Aliases: Homeobox protein TGIF2LX antibody, MGC130458 antibody, testis expressed homeobox Tex1 antibody, Tex1 antibody, TF2LX_HUMAN antibody, TGF antibody, TGF beta induced transcription factor like protein antibody, TGF(beta) induced transcription factor 2 like antibody, TGF-beta-induced transcription factor 2-like protein antibody, TGFB induced factor 2 like protein X linked antibody, TGFB induced factor homeobox 2 like, X linked antibody, TGFB-induced factor 2-like protein antibody, TGIF homeobox 1 antibody, TGIF-like on the X antibody, TGIF2LX antibody, TGIFLX antibody, Tgifx1 antibody, X-linked antibody

UniProt: [Q8IUE1](#)

Application Details

Application Notes: ELISA:1:500-1:5000, IHC:1:5-1:20,

Restrictions: For Research Use only

Handling

Format: Liquid

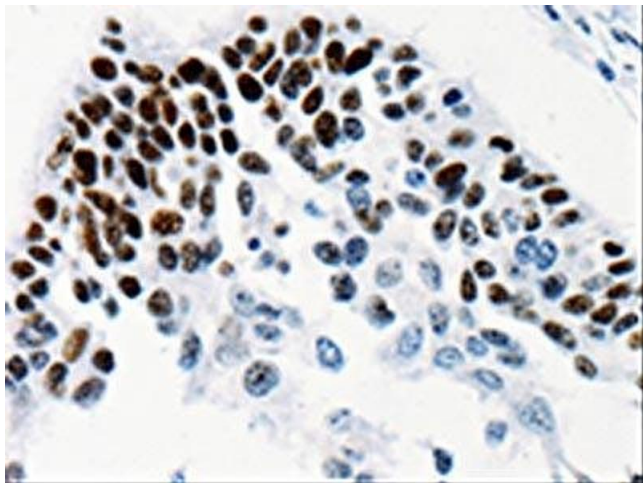
Buffer: -20 °C, pH 7.4 PBS, 0.05 % Sodium azide, 40 % Glycerol

Preservative: Sodium azide

Precaution of Use: This product contains Sodium azide: a POISONOUS AND HAZARDOUS SUBSTANCE which should be handled by trained staff only.

Storage: -20 °C, -80 °C

Storage Comment: Upon receipt, store at -20°C or -80°C. Avoid repeated freeze.



Immunohistochemistry

Image 1. The image on the left is immunohistochemistry of paraffin-embedded Human cervical cancer tissue using ABIN7131338(TGIF2LX Antibody) at dilution 1/25, on the right is treated with fusion protein. (Original magnification: x200)