



[Go to Product page](#)

Datasheet for ABIN7131341
anti-TGM4 antibody

3 Images

Overview

| | |
|--------------|--|
| Quantity: | 100 µL |
| Target: | TGM4 |
| Reactivity: | Human |
| Host: | Rabbit |
| Clonality: | Polyclonal |
| Conjugate: | This TGM4 antibody is un-conjugated |
| Application: | ELISA, Western Blotting (WB), Immunohistochemistry (IHC) |

Product Details

| | |
|-------------------|-------------------------------|
| Immunogen: | Fusion protein of Human TGM4 |
| Isotype: | IgG |
| Cross-Reactivity: | Human |
| Purification: | Antigen affinity purification |

Target Details

| | |
|-------------------|--|
| Target: | TGM4 |
| Alternative Name: | TGM4 (TGM4 Products) |
| Background: | Background: Transglutaminase 4 also known as TGM4, TGP or hTGP, is a typical TGase that is specifically expressed in prostate tissue. TGM4 are intercellularly localizing, Ca ²⁺ -dependent enzymes, which catalyze the formation of isopeptide bonds by transferring an amine on to glutamyl residues, thereby cross-linking glutamine residues and lysine residues in substrate |

Target Details

proteins. TGases influence numerous biological processes including blood coagulation, epidermal differentiation, seminal fluid coagulation, fertilization, cell differentiation and apoptosis.

Aliases: Dorsal prostate transglutaminase antibody, Dorsal protein 1 antibody, Dp1 antibody, Fibrinolygase antibody, hTGP antibody, Prostate specific transglutaminase antibody, Prostate transglutaminase antibody, Prostate-specific transglutaminase antibody, Protein glutamine gamma glutamyltransferase 4 antibody, Protein-glutamine gamma-glutamyltransferase 4 antibody, TG(P) antibody, TGase P antibody, TGase-4 antibody, TGase4 antibody, Tgm4 antibody, TGM4_HUMAN antibody, TGP antibody, Transglutaminase 4 (prostate) antibody, Transglutaminase 4 antibody, Transglutaminase P antibody, Transglutaminase, prostate antibody, Transglutaminase-4 antibody

UniProt: [P49221](#)

Application Details

Application Notes: ELISA:1:2000-1:5000, WB:1:500-1:2000, IHC:1:25-1:100,

Restrictions: For Research Use only

Handling

Format: Liquid

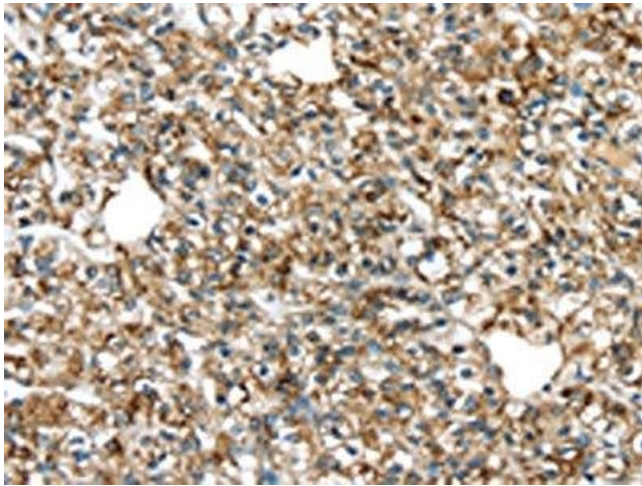
Buffer: -20 °C, pH 7.4 PBS, 0.05 % Sodium azide, 40 % Glycerol

Preservative: Sodium azide

Precaution of Use: This product contains Sodium azide: a POISONOUS AND HAZARDOUS SUBSTANCE which should be handled by trained staff only.

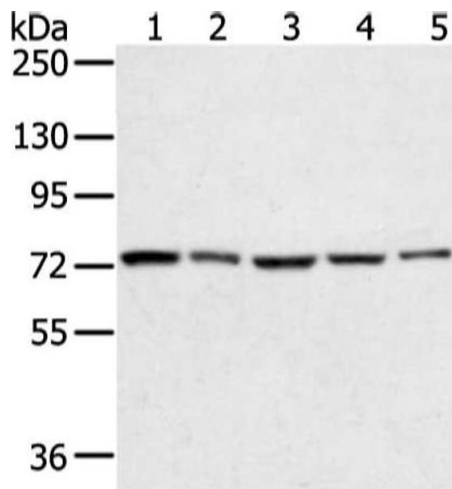
Storage: -20 °C,-80 °C

Storage Comment: Upon receipt, store at -20°C or -80°C. Avoid repeated freeze.



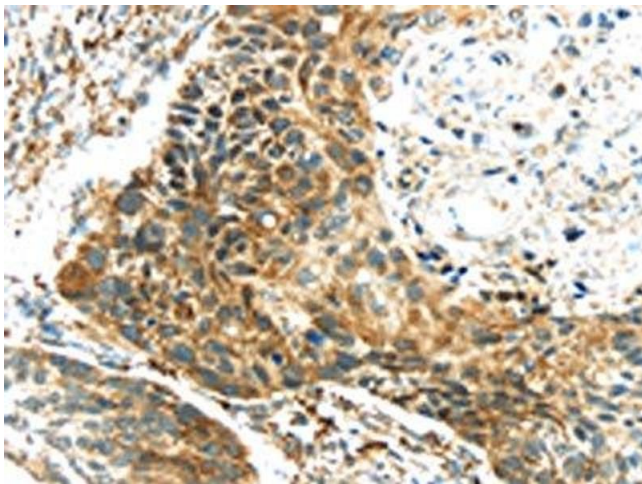
Immunohistochemistry

Image 1. The image on the left is immunohistochemistry of paraffin-embedded Human prostate cancer tissue using ABIN7131341(TGM4 Antibody) at dilution 1/20, on the right is treated with fusion protein. (Original magnification: x200)



Western Blotting

Image 2. Gel: 6 % SDS-PAGE, Lysate: 40 µg, Lane 1-5: HeLa, Incap, skov3, 293T and TM4 cell, Primary antibody: ABIN7131341(TGM4 Antibody) at dilution 1/400 dilution, Secondary antibody: Goat anti rabbit IgG at 1/8000 dilution, Exposure time: 10 seconds



Immunohistochemistry

Image 3. The image on the left is immunohistochemistry of paraffin-embedded Human esophagus cancer tissue using ABIN7131341(TGM4 Antibody) at dilution 1/20, on the right is treated with fusion protein. (Original magnification: x200)