

Datasheet for ABIN7131349

**anti-THSD1 antibody**[Go to Product page](#)**1** Image

## Overview

Quantity:	100 µL
Target:	THSD1
Reactivity:	Human
Host:	Rabbit
Clonality:	Polyclonal
Conjugate:	This THSD1 antibody is un-conjugated
Application:	ELISA, Immunohistochemistry (IHC)

## Product Details

Immunogen:	Fusion protein of Human THSD1
Isotype:	IgG
Cross-Reactivity:	Human, Mouse
Purification:	Antigen affinity purification

## Target Details

Target:	THSD1
Alternative Name:	THSD1 ( <a href="#">THSD1 Products</a> )
Background:	Background: The protein encoded by this gene contains a type 1 thrombospondin domain, which is found in a number of proteins involved in the complement pathway, as well as in extracellular matrix proteins. Alternatively spliced transcript variants encoding different isoforms have been observed for this gene.

## Target Details

Aliases: 4833423018Rik antibody, MGC74971 antibody, Thrombospondin type 1 domain containing protein 1 antibody, Thrombospondin type I domain 1 antibody, Thrombospondin type-1 domain-containing protein 1 antibody, Thrombospondin, type I, domain containing 1 antibody, THSD1 antibody, THSD1\_HUMAN antibody, TMTSP antibody, Transmembrane molecule with thrombospondin module antibody, UNQ3010 antibody

UniProt: [Q9NS62](#)

## Application Details

Application Notes: ELISA:1:2000-1:5000, IHC:1:25-1:100,

Restrictions: For Research Use only

## Handling

Format: Liquid

Buffer: -20 °C, pH 7.4 PBS, 0.05 % Sodium azide, 40 % Glycerol

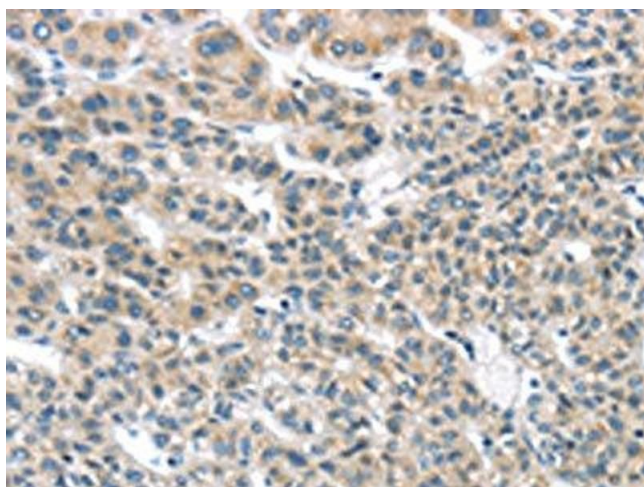
Preservative: Sodium azide

Precaution of Use: This product contains Sodium azide: a POISONOUS AND HAZARDOUS SUBSTANCE which should be handled by trained staff only.

Storage: -20 °C, -80 °C

Storage Comment: Upon receipt, store at -20°C or -80°C. Avoid repeated freeze.

## Images



### Immunohistochemistry

**Image 1.** The image on the left is immunohistochemistry of paraffin-embedded Human liver cancer tissue using ABIN7131349(THSD1 Antibody) at dilution 1/25, on the right is treated with fusion protein. (Original magnification: x200)