

Datasheet for ABIN7131359

anti-TKT antibody**2** Images[Go to Product page](#)

Overview

Quantity:	100 µL
Target:	TKT
Reactivity:	Human
Host:	Rabbit
Clonality:	Polyclonal
Conjugate:	This TKT antibody is un-conjugated
Application:	Immunohistochemistry (IHC), ELISA

Product Details

Immunogen:	Fusion protein of Human TKT
Isotype:	IgG
Cross-Reactivity:	Human, Mouse, Rat
Purification:	Antigen affinity purification

Target Details

Target:	TKT
Alternative Name:	TKT (TKT Products)
Background:	<p>Background: This gene encodes a thiamine-dependent enzyme which plays a role in the channeling of excess sugar phosphates to glycolysis in the pentose phosphate pathway.</p> <p>Alternatively spliced transcript variants encoding multiple isoforms have been observed for this gene.</p>

Target Details

Aliases: EC 2.2.1.1 antibody, FLJ34765 antibody, TK antibody, TKT 1 antibody, tkt antibody, TKT_HUMAN antibody, TKT1 antibody, Transketolase (Wernicke Korsakoff syndrome) antibody, Transketolase antibody

UniProt: [P29401](#)

Application Details

Application Notes: ELISA:1:2000-1:5000, IHC:1:25-1:100,

Restrictions: For Research Use only

Handling

Format: Liquid

Buffer: -20 °C, pH 7.4 PBS, 0.05 % Sodium azide, 40 % Glycerol

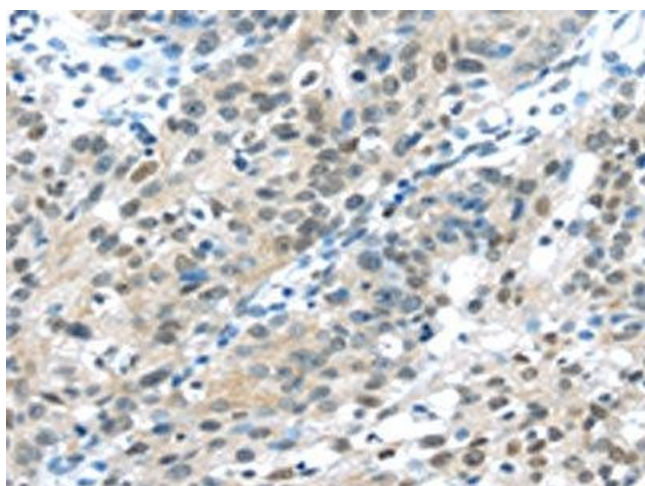
Preservative: Sodium azide

Precaution of Use: This product contains Sodium azide: a POISONOUS AND HAZARDOUS SUBSTANCE which should be handled by trained staff only.

Storage: -20 °C,-80 °C

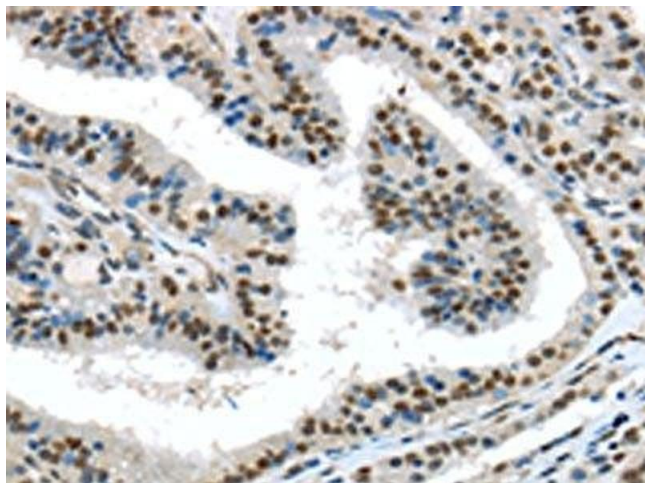
Storage Comment: Upon receipt, store at -20°C or -80°C. Avoid repeated freeze.

Images



Immunohistochemistry

Image 1. The image on the left is immunohistochemistry of paraffin-embedded Human breast cancer tissue using ABIN7131359(TKT Antibody) at dilution 1/30, on the right is treated with fusion protein. (Original magnification: x200)



Immunohistochemistry

Image 2. The image on the left is immunohistochemistry of paraffin-embedded Human thyroid cancer tissue using ABIN7131359(TKT Antibody) at dilution 1/30, on the right is treated with fusion protein. (Original magnification: x200)