



[Go to Product page](#)

Datasheet for ABIN7131404
anti-TMPRSS4 antibody

2 Images

Overview

Quantity:	100 µL
Target:	TMPRSS4
Reactivity:	Human
Host:	Rabbit
Clonality:	Polyclonal
Conjugate:	This TMPRSS4 antibody is un-conjugated
Application:	ELISA, Western Blotting (WB), Immunohistochemistry (IHC)

Product Details

Immunogen:	Fusion protein of Human TMPRSS4
Isotype:	IgG
Cross-Reactivity:	Human, Mouse
Purification:	Antigen affinity purification

Target Details

Target:	TMPRSS4
Alternative Name:	TMPRSS4 (TMPRSS4 Products)
Background:	Background: This gene encodes a member of the serine protease family. Serine proteases are known to be involved in a variety of biological processes, whose malfunction often leads to human diseases and disorders. This gene was identified as a gene overexpressed in pancreatic carcinoma. The encoded protein is membrane bound with a N-terminal anchor sequence and a

Target Details

glycosylated extracellular region containing the serine protease domain. Multiple transcript variants encoding different isoforms have been found for this gene.

Aliases: UNQ776/PRO1570 antibody, CAPH2 antibody, Channel-activating protease 2 antibody, Membrane type serine protease 2 antibody, Membrane-type serine protease 2 antibody, MT SP2 antibody, MT-SP2 antibody, TMPRSS 4 antibody, TMPRSS3 antibody, TMPRSS4 antibody, TMPS4_HUMAN antibody, Transmembrane protease serine 4 antibody, Transmembrane protease, serine 4 antibody, Transmembrane serine protease 3 antibody

UniProt: [Q9NRS4](#)

Application Details

Application Notes: ELISA:1:1000-1:2000, WB:1:200-1:1000, IHC:1:30-1:150,

Restrictions: For Research Use only

Handling

Format: Liquid

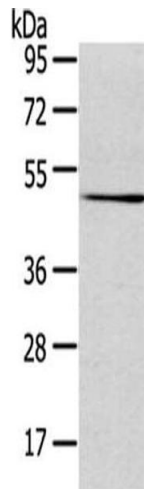
Buffer: -20 °C, pH 7.4 PBS, 0.05 % Sodium azide, 40 % Glycerol

Preservative: Sodium azide

Precaution of Use: This product contains Sodium azide: a POISONOUS AND HAZARDOUS SUBSTANCE which should be handled by trained staff only.

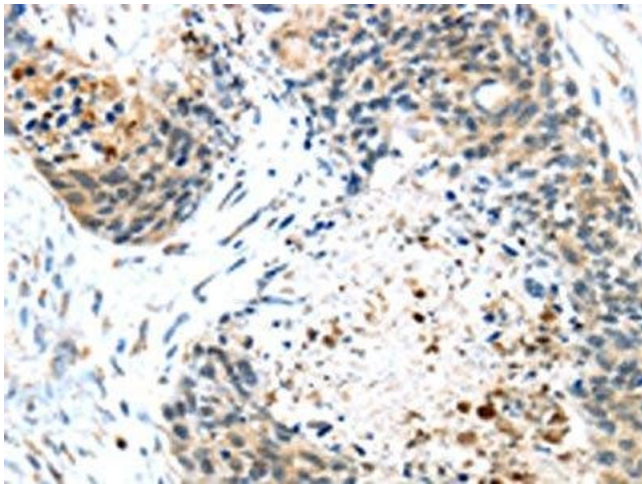
Storage: -20 °C,-80 °C

Storage Comment: Upon receipt, store at -20°C or -80°C. Avoid repeated freeze.



Western Blotting

Image 1. Gel: 8 % SDS-PAGE, Lysate: 40 µg, Primary antibody: ABIN7131404 (TMPRSS4 Antibody) at dilution 1/500 dilution, Secondary antibody: Goat anti rabbit IgG at 1/8000 dilution, Exposure time: 3 minutes



Immunohistochemistry

Image 2. The image on the left is immunohistochemistry of paraffin-embedded Human esophagus cancer tissue using ABIN7131404 (TMPRSS4 Antibody) at dilution 1/45, on the right is treated with fusion protein. (Original magnification: x200)