

Datasheet for ABIN7131474

anti-TRIM16 antibody**2** Images[Go to Product page](#)

Overview

Quantity:	100 µL
Target:	TRIM16
Reactivity:	Human
Host:	Rabbit
Clonality:	Polyclonal
Conjugate:	This TRIM16 antibody is un-conjugated
Application:	ELISA, Immunohistochemistry (IHC)

Product Details

Immunogen:	Fusion protein of Human TRIM16
Isotype:	IgG
Cross-Reactivity:	Human, Mouse
Purification:	Antigen affinity purification

Target Details

Target:	TRIM16
Alternative Name:	TRIM16 (TRIM16 Products)
Background:	Background: This gene was identified as an estrogen and anti-estrogen regulated gene in epithelial cells stably expressing estrogen receptor. The protein encoded by this gene contains two B box domains and a coiled-coiled region that are characteristic of the B box zinc finger protein family. The proteins of this family have been reported to be involved in a variety of

Target Details

biological processes including cell growth, differentiation and pathogenesis. Expression of this gene was detected in most tissues. Its function, however, has not yet been determined.

Aliases: EBBP antibody, Estrogen responsive B box protein antibody, Estrogen-responsive B box protein antibody, TRI16_HUMAN antibody, TRIM 16 antibody, TRIM16 antibody, Tripartite motif containing 16 antibody, Tripartite motif containing protein 16 antibody, Tripartite motif-containing protein 16 antibody

UniProt: [O95361](#)

Pathways: [Retinoic Acid Receptor Signaling Pathway](#), [Response to Growth Hormone Stimulus](#), [Growth Factor Binding](#)

Application Details

Application Notes: ELISA:1:2000-1:5000, IHC:1:25-1:100,

Restrictions: For Research Use only

Handling

Format: Liquid

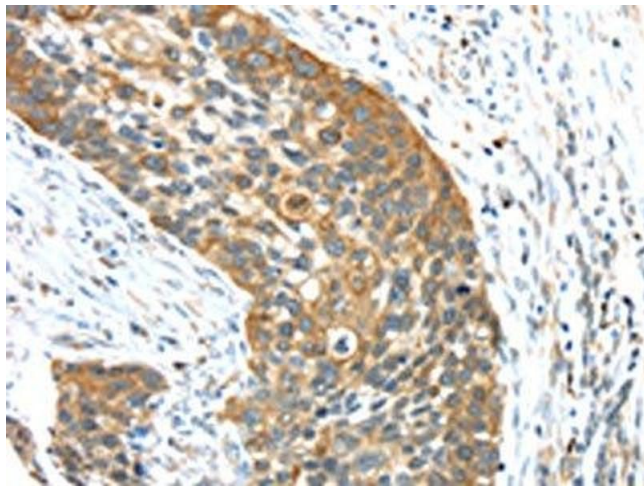
Buffer: -20 °C, pH 7.4 PBS, 0.05 % Sodium azide, 40 % Glycerol

Preservative: Sodium azide

Precaution of Use: This product contains Sodium azide: a POISONOUS AND HAZARDOUS SUBSTANCE which should be handled by trained staff only.

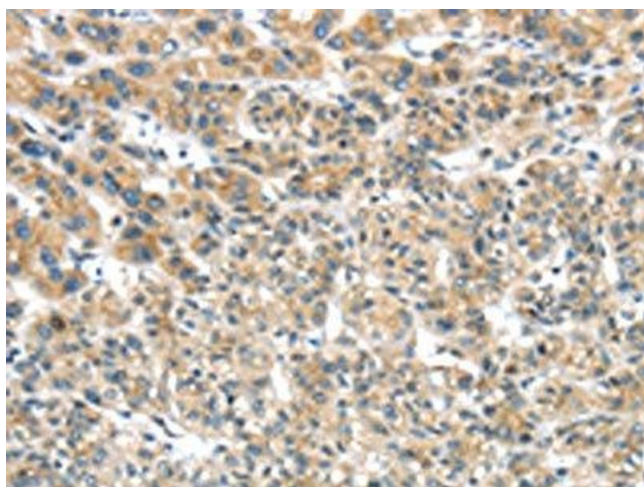
Storage: -20 °C, -80 °C

Storage Comment: Upon receipt, store at -20°C or -80°C. Avoid repeated freeze.



Immunohistochemistry

Image 1. The image on the left is immunohistochemistry of paraffin-embedded Human esophagus cancer tissue using ABIN7131474(TRIM16 Antibody) at dilution 1/35, on the right is treated with fusion protein. (Original magnification: x200)



Immunohistochemistry

Image 2. The image on the left is immunohistochemistry of paraffin-embedded Human liver cancer tissue using ABIN7131474(TRIM16 Antibody) at dilution 1/35, on the right is treated with fusion protein. (Original magnification: x200)