

Datasheet for ABIN7131518  
**anti-TWF1 antibody**

3 Images



[Go to Product page](#)

## Overview

Quantity:	100 µL
Target:	TWF1
Reactivity:	Human
Host:	Rabbit
Clonality:	Polyclonal
Conjugate:	This TWF1 antibody is un-conjugated
Application:	Western Blotting (WB), ELISA, Immunohistochemistry (IHC)

## Product Details

Immunogen:	Fusion protein of Human TWF1
Isotype:	IgG
Cross-Reactivity:	Human, Mouse, Rat
Purification:	Antigen affinity purification

## Target Details

Target:	TWF1
Alternative Name:	TWF1 ( <a href="#">TWF1 Products</a> )
Background:	Background: This gene encodes twinfilin, an actin monomer-binding protein conserved from yeast to mammals. Studies of the mouse counterpart suggest that this protein may be an actin monomer-binding protein, and its localization to cortical G-actin-rich structures may be regulated by the small GTPase RAC1.

## Target Details

Aliases: A6 antibody, A6 protein tyrosine kinase antibody, MGC105817 antibody, MGC23788 antibody, MGC41876 antibody, Protein A6 antibody, Protein tyrosine kinase 9 antibody, PTK9 antibody, PTK9 protein tyrosine kinase 9 antibody, TWF 1 antibody, twf1 antibody, TWF1\_HUMAN antibody, Twinfilin 1 antibody, Twinfilin actin binding protein, homolog 1 antibody, Twinfilin antibody, Twinfilin, actin-binding protein, homolog 1 (Drosophila) antibody, Twinfilin, Drosophila, homolog of, 1 antibody, Twinfilin-1 antibody

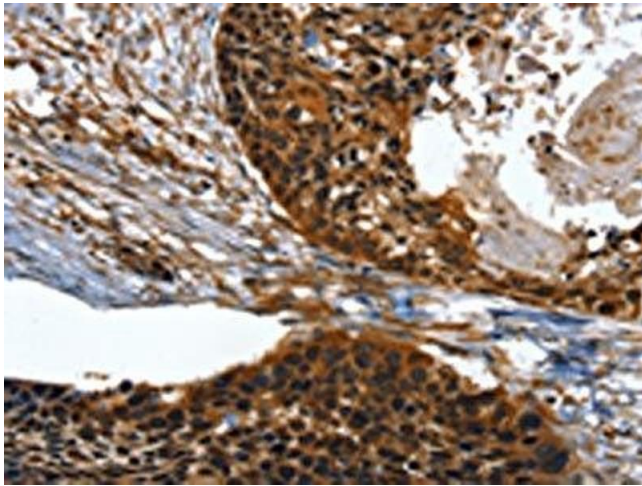
UniProt:	<a href="#">Q12792</a>
Pathways:	<a href="#">Regulation of Actin Filament Polymerization</a> , <a href="#">Maintenance of Protein Location</a>

## Application Details

Application Notes:	ELISA:1:1000-1:2000, WB:1:200-1:1000, IHC:1:25-1:100,
Restrictions:	For Research Use only

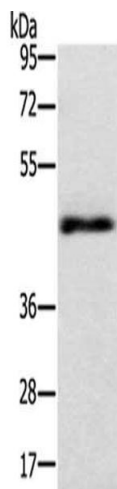
## Handling

Format:	Liquid
Buffer:	-20 °C, pH 7.4 PBS, 0.05 % Sodium azide, 40 % Glycerol
Preservative:	Sodium azide
Precaution of Use:	This product contains Sodium azide: a POISONOUS AND HAZARDOUS SUBSTANCE which should be handled by trained staff only.
Storage:	-20 °C,-80 °C
Storage Comment:	Upon receipt, store at -20°C or -80°C. Avoid repeated freeze.



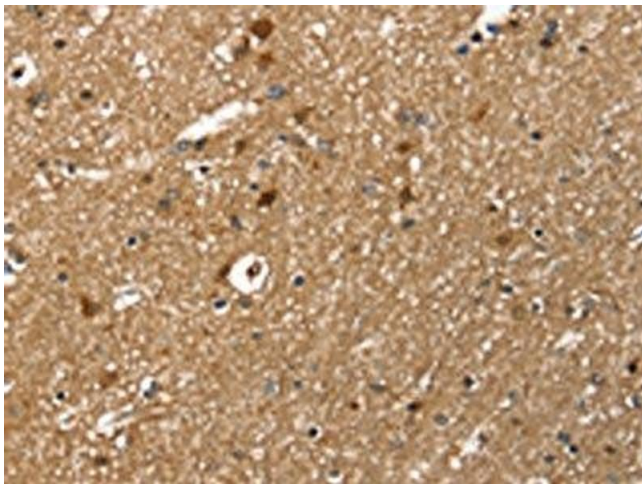
### Immunohistochemistry

**Image 1.** The image on the left is immunohistochemistry of paraffin-embedded Human esophagus cancer tissue using ABIN7131518(TWF1 Antibody) at dilution 1/30, on the right is treated with fusion protein. (Original magnification: x200)



### Western Blotting

**Image 2.** Gel: 8 % SDS-PAGE, Lysate: 40 µg, Lane: Lovo cells, Primary antibody: ABIN7131518(TWF1 Antibody) at dilution 1/400, Secondary antibody: Goat anti rabbit IgG at 1/8000 dilution, Exposure time: 2 minutes



### Immunohistochemistry

**Image 3.** The image on the left is immunohistochemistry of paraffin-embedded Human brain tissue using ABIN7131518(TWF1 Antibody) at dilution 1/30, on the right is treated with fusion protein. (Original magnification: x200)