



[Go to Product page](#)

Datasheet for ABIN7131541

anti-UGCG antibody

2 Images

Overview

Quantity:	100 µL
Target:	UGCG
Reactivity:	Human
Host:	Rabbit
Clonality:	Polyclonal
Conjugate:	This UGCG antibody is un-conjugated
Application:	Western Blotting (WB), ELISA, Immunohistochemistry (IHC)

Product Details

Immunogen:	Fusion protein of Human UGCG
Isotype:	IgG
Cross-Reactivity:	Human, Mouse, Rat
Purification:	Antigen affinity purification

Target Details

Target:	UGCG
Alternative Name:	UGCG (UGCG Products)
Background:	Background: Glycosphingolipids (GSLs) are a group of membrane components that contain lipid and sugar moieties. They are present in essentially all animal cells and are believed to have important roles in various cellular processes. UDP-glucose ceramide glucosyltransferase catalyzes the first glycosylation step in glycosphingolipid biosynthesis. The product,

Target Details

glucosylceramide, is the core structure of more than 300 GSLs. UGCG is widely expressed and transcription is upregulated during keratinocyte differentiation.

Aliases: CEGT_HUMAN antibody, Ceramide glucosyltransferase antibody, GCS antibody, GLCT 1 antibody, GLCT-1 antibody, GLCT1 antibody, Glucosylceramide synthase antibody, UDP glucose ceramide glucosyltransferase antibody, UDP glucose N acylsphingosine D glucosyltransferase antibody, UDP-glucose ceramide glucosyltransferase antibody, UDP-glucose:N-acylsphingosine D-glucosyltransferase antibody, Ugcg antibody

UniProt: [Q16739](#)

Application Details

Application Notes: ELISA:1:2000-1:5000, WB:1:500-1:2000, IHC:1:25-1:100,

Restrictions: For Research Use only

Handling

Format: Liquid

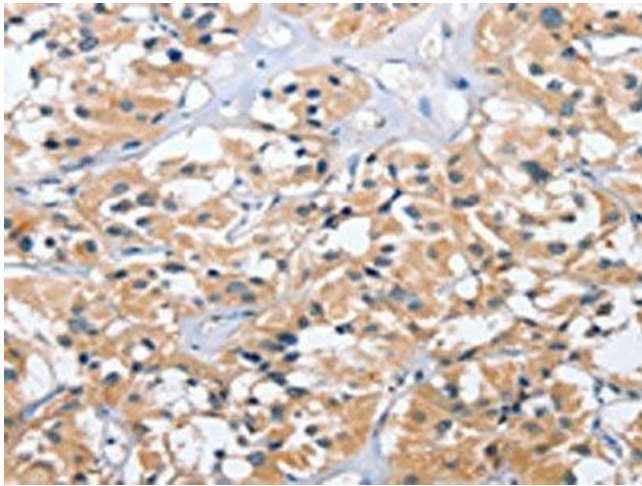
Buffer: -20 °C, pH 7.4 PBS, 0.05 % Sodium azide, 40 % Glycerol

Preservative: Sodium azide

Precaution of Use: This product contains Sodium azide: a POISONOUS AND HAZARDOUS SUBSTANCE which should be handled by trained staff only.

Storage: -20 °C,-80 °C

Storage Comment: Upon receipt, store at -20°C or -80°C. Avoid repeated freeze.



Immunohistochemistry

Image 1. The image on the left is immunohistochemistry of paraffin-embedded Human thyroid cancer tissue using ABIN7131541(UGCG Antibody) at dilution 1/40, on the right is treated with fusion protein. (Original magnification: x200)



Western Blotting

Image 2. Gel: 10 % SDS-PAGE, Lysate: 40 µg, Lane: A431 cells, Primary antibody: ABIN7131541(UGCG Antibody) at dilution 1/800, Secondary antibody: Goat anti rabbit IgG at 1/8000 dilution, Exposure time: 1 minute