

Datasheet for ABIN713156
anti-RPS6KA1 antibody (pThr348)



[Go to Product page](#)

2 Images

Overview

Quantity:	100 µL
Target:	RPS6KA1
Binding Specificity:	pThr348
Reactivity:	Human, Mouse, Rat
Host:	Rabbit
Clonality:	Polyclonal
Conjugate:	This RPS6KA1 antibody is un-conjugated
Application:	Western Blotting (WB), ELISA, Immunofluorescence (Paraffin-embedded Sections) (IF (p)), Immunofluorescence (Cultured Cells) (IF (cc)), Immunohistochemistry (Paraffin-embedded Sections) (IHC (p)), Immunohistochemistry (Frozen Sections) (IHC (fro))

Product Details

Immunogen:	KLH conjugated synthetic phosphopeptide derived from human RPS6KA1 around the phosphorylation site of Thr348
Isotype:	IgG
Cross-Reactivity:	Human, Mouse, Rat
Predicted Reactivity:	Dog,Cow,Pig
Purification:	Purified by Protein A.

Target Details

Target:	RPS6KA1
---------	---------

Target Details

Alternative Name: RPS6KA1 ([RPS6KA1 Products](#))

Background: Synonyms: p90RSKThr348, RPS6KA1phospho T348, p90 RSK1 , p90rsk , p90S6K , pp90RSK1 , Ribosomal protein S6 kinase 90kD 1 , Ribosomal protein S6 kinase 90kD polypeptide 1 , Ribosomal protein S6 kinase 90 kDa polypeptide 1 , Ribosomal protein S6 kinase alpha 1 , Ribosomal protein S6 kinase polypeptide 1 , Ribosomal S6 kinase 1 , RPS6K1 alpha , rps6ka , Rps6ka1 , RSK 1 , RSK 1 p90 , RSK , RSK1 , S6K alpha 1 , 90 kDa ribosomal protein S6 kinase 1 , dJ590P13.1 ribosomal protein S6 kinase, 90kD, polypeptide 1 , dJ590P13.1 , EC 2.7.11.1 , HU 1 , HU1 , MAP kinase activated protein kinase 1a , MAPKAP kinase 1A , MAPKAPK1A , MGC79981 , Mitogen-activated protein kinase-activated protein kinase 1A, KS6A1_HUMAN.

Background: Rsk1 is a member of a family of 90 kDa ribosomal protein S6 kinases, which includes Rsk1, Rsk2 and Rsk3. These are broadly expressed serine/threonine protein kinases activated in response to mitogenic stimuli, including extracellular signal regulated protein kinases Erk1 and Erk2. Rsk1 is activated by MAPK in vitro and in vivo via phosphorylation. Active Rsk1 appear to play a major role in transcriptional regulation by translocating to the nucleus and phosphorylating c Fos and CREB.

Gene ID: 6195

Pathways: [MAPK Signaling](#), [Neurotrophin Signaling Pathway](#), [Activation of Innate immune Response](#), [Toll-Like Receptors Cascades](#)

Application Details

Application Notes: WB 1:300-5000
ELISA 1:500-1000
IHC-P 1:200-400
IHC-F 1:100-500
IF(IHC-P) 1:50-200
IF(IHC-F) 1:50-200
IF(ICC) 1:50-200

Restrictions: For Research Use only

Handling

Format: Liquid

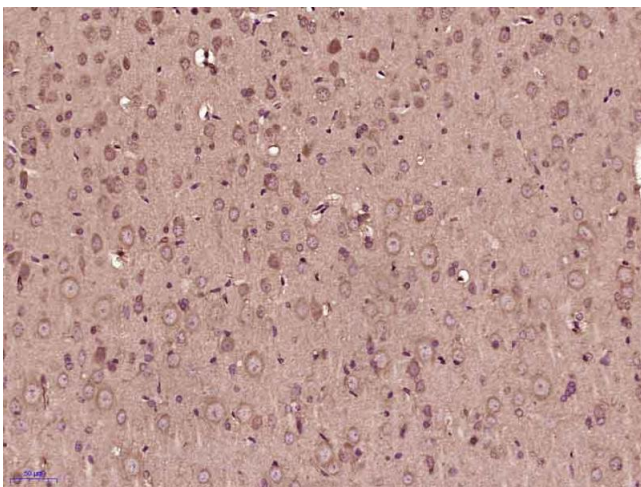
Concentration: 1 µg/µL

Buffer: 0.01M TBS(pH 7.4) with 1 % BSA, 0.02 % Proclin300 and 50 % Glycerol.

Handling

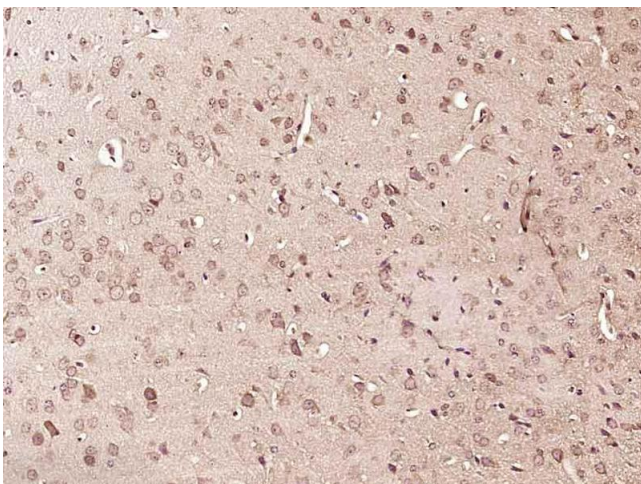
Preservative:	ProClin
Precaution of Use:	This product contains ProClin: a POISONOUS AND HAZARDOUS SUBSTANCE, which should be handled by trained staff only.
Storage:	4 °C,-20 °C
Storage Comment:	Shipped at 4°C. Store at -20°C for one year. Avoid repeated freeze/thaw cycles.
Expiry Date:	12 months

Images



Immunohistochemistry (Paraffin-embedded Sections)

Image 1. Paraformaldehyde-fixed, paraffin embedded rat brain, Antigen retrieval by boiling in sodium citrate buffer (pH6) for 15min, Block endogenous peroxidase by 3% hydrogen peroxide for 30 minutes, Blocking buffer (normal goat serum) at 37°C for 20min, Antibody incubation with RPS6KA1(Thr348) Polyclonal Antibody at 1:400 overnight at 4°C, followed by a conjugated secondary and DAB staining.



Immunohistochemistry (Paraffin-embedded Sections)

Image 2. Paraformaldehyde-fixed, paraffin embedded rat brain, Antigen retrieval by boiling in sodium citrate buffer (pH6) for 15min, Block endogenous peroxidase by 3% hydrogen peroxide for 30 minutes, Blocking buffer (normal goat serum) at 37°C for 20min, Antibody incubation with RPS6KA1(Thr348) Polyclonal Antibody at 1:400 overnight at 4°C, followed by a conjugated secondary and DAB staining.