



[Go to Product page](#)

Datasheet for ABIN7131638

Guinea Pig anti-Goat IgG Antibody

1 Image

Overview

Quantity:	100 µg
Target:	IgG
Reactivity:	Goat
Host:	Guinea Pig
Clonality:	Polyclonal
Application:	ELISA, Western Blotting (WB)

Product Details

Immunogen:	Goat IgG heavy chain (Native Protein)
Isotype:	IgG
Cross-Reactivity:	Goat
Purification:	>95%, Protein G purified

Target Details

Target:	IgG
Abstract:	IgG Products
Target Type:	Antibody
Background:	Background: The basic structure of IgG molecule is composed of four polypeptide chains, that is, from the same two small molecular weight peptides (referred to as light chain, Light chain, L chain, the relative molecular mass of about 25,000) and two identical large molecular weight peptides (called heavy chain, heavy chain, H Chain, relative molecular mass of about 55,000)

Target Details

composed. A natural two heavy chains of IgG molecules are always the same. The goat IgG antibodies can specifically recognize the heavy Chain.

Aliases: IgG

Application Details

Application Notes: Recommended dilution: WB:1:1000-1:5000,

Restrictions: For Research Use only

Handling

Format: Liquid

Buffer: Preservative: 0.03 % Proclin 300
Constituents: 50 % Glycerol, 0.01M PBS, PH 7.4

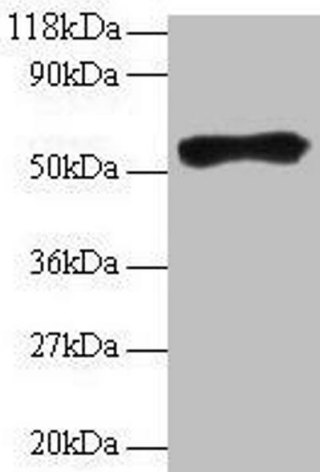
Preservative: ProClin

Precaution of Use: This product contains ProClin: a POISONOUS AND HAZARDOUS SUBSTANCE which should be handled by trained staff only.

Storage: -20 °C,-80 °C

Storage Comment: Upon receipt, store at -20°C or -80°C. Avoid repeated freeze.

Images



Western Blotting

Image 1. Western blot All lanes: Goat IgG heavy chain antibody at 2 µg/mL + Goat serum at 1: 100 Secondary Rabbit polyclonal to Guinea pig IgG at 1/15000 dilution
Predicted band size: 55 kDa Observed band size: 55 kDa