



[Go to Product page](#)

Datasheet for ABIN7134001
anti-Hemoglobin antibody

1 Image

Overview

Quantity:	100 µg
Target:	Hemoglobin
Reactivity:	Human
Host:	Rabbit
Clonality:	Polyclonal
Conjugate:	This Hemoglobin antibody is un-conjugated
Application:	ELISA, Western Blotting (WB)

Product Details

Immunogen:	Human Hemoglobin protein (Native Protein)
Isotype:	IgG
Cross-Reactivity:	Human
Purification:	>95%, Protein G purified

Target Details

Target:	Hemoglobin
Abstract:	Hemoglobin Products
Background:	Background: Hemoglobin is involved in oxygen transport from the lung to the various peripheral tissues. The alpha (HBA) and beta (HBB) loci determine the structure of the 2 types of polypeptide chains in adult Hemoglobin. The normal adult Hemoglobin tetramer consists of two alpha chains and two beta chains. Mutant beta globin causes sickle cell anemia. Absence

Target Details

of beta chain causes beta zero thalassemia. Reduced amounts of detectable beta globin causes beta plus thalassemia.

Aliases: Hemoglobin

Application Details

Application Notes: Recommended dilution: WB:1:1000-1:5000,

Restrictions: For Research Use only

Handling

Format: Liquid

Buffer: Preservative: 0.03 % Proclin 300
Constituents: 50 % Glycerol, 0.01M PBS, PH 7.4

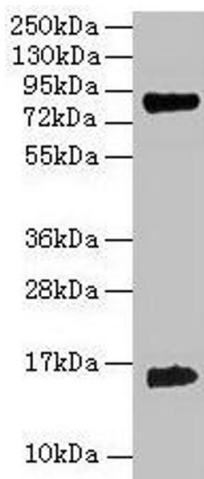
Preservative: ProClin

Precaution of Use: This product contains ProClin: a POISONOUS AND HAZARDOUS SUBSTANCE which should be handled by trained staff only.

Storage: -20 °C,-80 °C

Storage Comment: Upon receipt, store at -20°C or -80°C. Avoid repeated freeze.

Images



Western Blotting

Image 1. Western blot All lanes: Hemoglobin polyclonal antibody at 2 µg/mL + 293T whole cell lysate Secondary Goat polyclonal to rabbit IgG at 1/15000 dilution Predicted band size: 16 kDa Observed band size: 16 kDa