

Datasheet for ABIN7134517
anti-Lactoferrin antibody

3 Images

[Go to Product page](#)

Overview

Quantity:	100 µg
Target:	Lactoferrin (LTF)
Reactivity:	Human
Host:	Rabbit
Clonality:	Polyclonal
Conjugate:	This Lactoferrin antibody is un-conjugated
Application:	ELISA, Immunohistochemistry (IHC), Immunofluorescence (IF)

Product Details

Immunogen:	Human Lactotransferrin protein (Native Protein)
Isotype:	IgG
Cross-Reactivity:	Human
Purification:	>95%, Protein G purified

Target Details

Target:	Lactoferrin (LTF)
Alternative Name:	LTF (LTF Products)
Background:	<p>Background: Transferrins are iron binding transport proteins which can bind two Fe³⁺ ions in association with the binding of an anion, usually bicarbonate. Ref.23 Ref.30 Lactotransferrin has antimicrobial activity which depends on the extracellular cation concentration.</p> <p>Aliases: GIG12 antibody, Growth inhibiting protein 12 antibody, HLF2 antibody, Kaliocin 1</p>

Target Details

antibody, Lactoferrin antibody, Lactoferrin-C antibody, Lactotransferrin antibody, LF antibody, LTF antibody, Neutrophil lactoferrin antibody, Talalactoferrin antibody, TRFL_HUMAN antibody

UniProt: [P02788](#)

Pathways: [Transition Metal Ion Homeostasis](#)

Application Details

Application Notes: Recommended dilution: IHC:1:200-1:500, IF:1:50-1:200,

Restrictions: For Research Use only

Handling

Format: Liquid

Buffer: Preservative: 0.03 % Proclin 300
Constituents: 50 % Glycerol, 0.01M PBS, PH 7.4

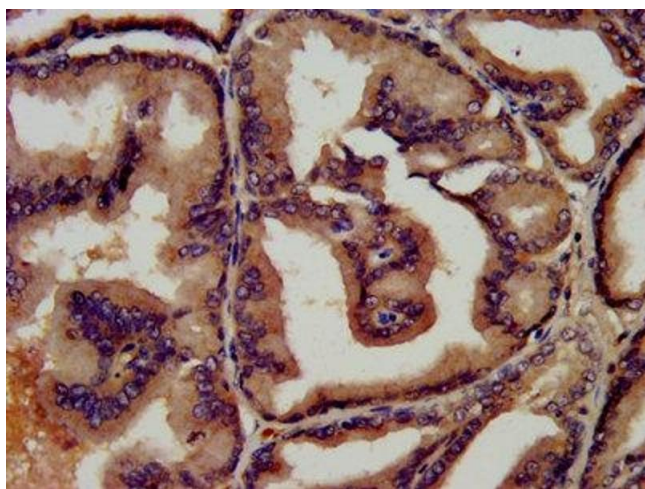
Preservative: ProClin

Precaution of Use: This product contains ProClin: a POISONOUS AND HAZARDOUS SUBSTANCE which should be handled by trained staff only.

Storage: -20 °C,-80 °C

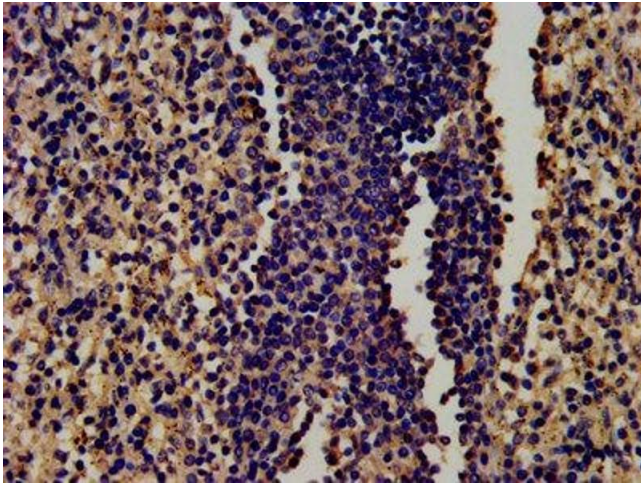
Storage Comment: Upon receipt, store at -20°C or -80°C. Avoid repeated freeze.

Images



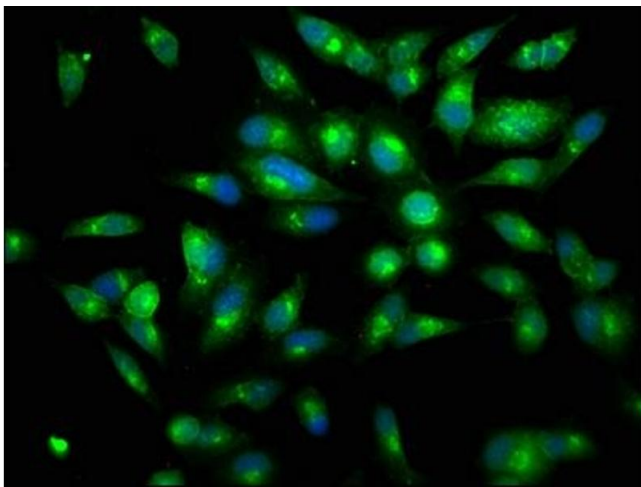
Immunohistochemistry

Image 1. IHC image of ABIN7134517 diluted at 1:450 and staining in paraffin-embedded human prostate tissue performed on a Leica Bond™ system. After dewaxing and hydration, antigen retrieval was mediated by high pressure in a citrate buffer (pH 6.0). Section was blocked with 10% normal goat serum 30min at RT. Then primary antibody (1% BSA) was incubated at 4°C overnight. The primary is detected by a biotinylated secondary antibody and visualized using an HRP conjugated SP system.



Immunohistochemistry

Image 2. IHC image of ABIN7134517 diluted at 1:450 and staining in paraffin-embedded human spleen tissue performed on a Leica Bond™ system. After dewaxing and hydration, antigen retrieval was mediated by high pressure in a citrate buffer (pH 6.0). Section was blocked with 10% normal goat serum 30min at RT. Then primary antibody (1% BSA) was incubated at 4°C overnight. The primary is detected by a biotinylated secondary antibody and visualized using an HRP conjugated SP system.



Immunofluorescence

Image 3. Immunofluorescence staining of HeLa cells with ABIN7134517 at 1:150, counter-stained with DAPI. The cells were fixed in 4% formaldehyde, permeabilized using 0.2% Triton X-100 and blocked in 10% normal Goat Serum. The cells were then incubated with the antibody overnight at 4°C. The secondary antibody was Alexa Fluor 488-conjugated AffiniPure Goat Anti-Rabbit IgG(H+L).