



[Go to Product page](#)

Datasheet for ABIN713456

anti-SCNN1B antibody (pThr615)

1 Image

Overview

Quantity:	100 µL
Target:	SCNN1B
Binding Specificity:	pThr615
Reactivity:	Human
Host:	Rabbit
Clonality:	Polyclonal
Conjugate:	This SCNN1B antibody is un-conjugated
Application:	Western Blotting (WB), ELISA, Immunofluorescence (Cultured Cells) (IF (cc)), Immunofluorescence (Paraffin-embedded Sections) (IF (p)), Immunohistochemistry (Frozen Sections) (IHC (fro))

Product Details

Immunogen:	KLH conjugated synthetic phosphopeptide derived from human SCNN1B around the phosphorylation site of Thr615
Isotype:	IgG
Cross-Reactivity:	Human
Predicted Reactivity:	Mouse,Rat,Dog,Cow,Pig,Horse,Rabbit,Guinea Pig
Purification:	Purified by Protein A.

Target Details

Target:	SCNN1B
---------	--------

Target Details

Alternative Name:	SCNN1B (SCNN1B Products)
Background:	<p>Synonyms: BESC1, ENaCb, SCNEB, ENaCbeta, Amiloride-sensitive sodium channel subunit beta, Beta-NaCH, Epithelial Na(+) channel subunit beta, Beta-ENaC, Nonvoltage-gated sodium channel 1 subunit beta, SCNN1B</p> <p>Background: Sodium permeable non-voltage-sensitive ion channel inhibited by the diuretic amiloride. Mediates the electrodiffusion of the luminal sodium (and water, which follows osmotically) through the apical membrane of epithelial cells. Plays an essential role in electrolyte and blood pressure homeostasis, but also in airway surface liquid homeostasis, which is important for proper clearance of mucus. Controls the reabsorption of sodium in kidney, colon, lung and sweat glands. Also plays a role in taste perception.</p>
Gene ID:	6338
UniProt:	P51168

Application Details

Application Notes:	WB 1:300-5000 ELISA 1:500-1000 IHC-F 1:100-500 IF(IHC-P) 1:50-200 IF(IHC-F) 1:50-200 IF(ICC) 1:50-200
Restrictions:	For Research Use only

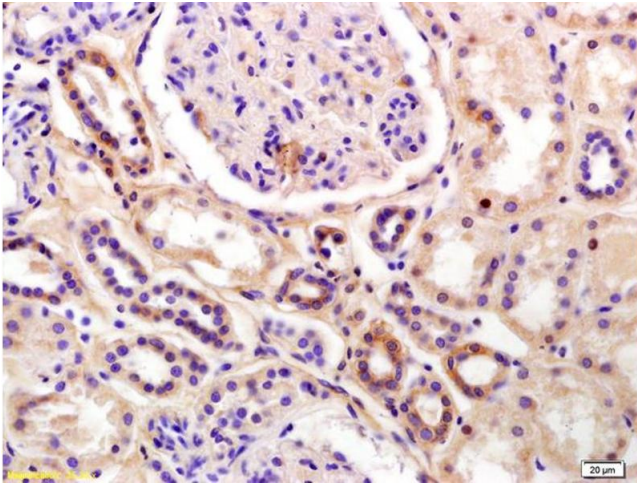
Handling

Format:	Liquid
Concentration:	1 µg/µL
Buffer:	0.01M TBS(pH 7.4) with 1 % BSA, 0.02 % Proclin300 and 50 % Glycerol.
Preservative:	ProClin
Precaution of Use:	This product contains ProClin: a POISONOUS AND HAZARDOUS SUBSTANCE, which should be handled by trained staff only.
Storage:	4 °C,-20 °C
Storage Comment:	Shipped at 4°C. Store at -20°C for one year. Avoid repeated freeze/thaw cycles.

Handling

Expiry Date: 12 months

Images



Immunohistochemistry

Image 1. Formalin-fixed and paraffin embedded human kidney labeled with Anti-phospho-SCNN1B(Thr615) Polyclonal Antibody, Unconjugated (ABIN713456) at 1:200 followed by conjugation to the secondary antibody and DAB staining