

Datasheet for ABIN713711  
**anti-MAP7 antibody (AA 151-250)**[Go to Product page](#)

## 1 Image

## Overview

Quantity:	100 µL
Target:	MAP7
Binding Specificity:	AA 151-250
Reactivity:	Human
Host:	Rabbit
Clonality:	Polyclonal
Conjugate:	This MAP7 antibody is un-conjugated
Application:	ELISA, Immunofluorescence (Cultured Cells) (IF (cc)), Immunofluorescence (Paraffin-embedded Sections) (IF (p)), Immunohistochemistry (Paraffin-embedded Sections) (IHC (p)), Immunohistochemistry (Frozen Sections) (IHC (fro))

## Product Details

Immunogen:	KLH conjugated synthetic peptide derived from human Ensconsin
Isotype:	IgG
Predicted Reactivity:	Human,Mouse,Rat,Dog,Cow,Sheep,Pig,Rabbit
Purification:	Purified by Protein A.

## Target Details

Target:	MAP7
Alternative Name:	Ensconsin ( <a href="#">MAP7 Products</a> )

## Target Details

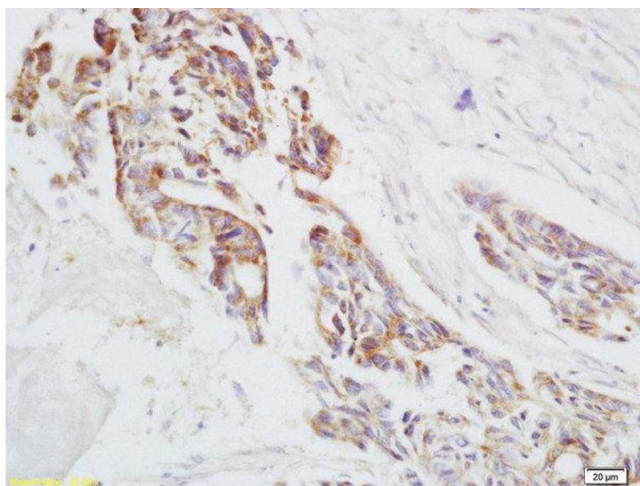
Background:	Synonyms: EMAP115, E-MAP-115, Ensconsin, Epithelial microtubule-associated protein of 115 kDa, Microtubule-associated protein 7, MAP-7, MAP7 Background: Microtubule-stabilizing protein that may play an important role during reorganization of microtubules during polarization and differentiation of epithelial cells. Associates with microtubules in a dynamic manner. May play a role in the formation of intercellular contacts. Colocalization with TRPV4 results in the redistribution of TRPV4 toward the membrane and may link cytoskeletal microfilaments.
Gene ID:	9053
UniProt:	<a href="#">Q14244</a>

## Application Details

Application Notes:	ELISA 1:500-1000 IHC-P 1:200-400 IHC-F 1:100-500 IF(IHC-P) 1:50-200 IF(IHC-F) 1:50-200 IF(ICC) 1:50-200
Restrictions:	For Research Use only

## Handling

Format:	Liquid
Concentration:	1 µg/µL
Buffer:	0.01M TBS( pH 7.4) with 1 % BSA, 0.02 % Proclin300 and 50 % Glycerol.
Preservative:	ProClin
Precaution of Use:	This product contains ProClin: a POISONOUS AND HAZARDOUS SUBSTANCE, which should be handled by trained staff only.
Storage:	4 °C,-20 °C
Storage Comment:	Shipped at 4°C. Store at -20°C for one year. Avoid repeated freeze/thaw cycles.
Expiry Date:	12 months



#### Immunohistochemistry (Paraffin-embedded Sections)

**Image 1.** Formalin-fixed and paraffin embedded human rectal carcinoma labeled with Anti-Ensconsin Polyclonal Antibody, Unconjugated at 1:200 followed by conjugation to the secondary antibody and DAB staining