



[Go to Product page](#)

Datasheet for ABIN7137912  
**anti-Hemoglobin antibody**

1 Image

Overview

Quantity:	100 µg
Target:	Hemoglobin
Reactivity:	Mouse
Host:	Rabbit
Clonality:	Polyclonal
Conjugate:	This Hemoglobin antibody is un-conjugated
Application:	ELISA, Western Blotting (WB)

Product Details

Immunogen:	Mouse Hemoglobin protein (Native Protein)
Isotype:	IgG
Cross-Reactivity:	Mouse
Purification:	>95%, Protein G purified

Target Details

Target:	Hemoglobin
Abstract:	<a href="#">Hemoglobin Products</a>
Background:	Background: Hemoglobin is involved in oxygen transport from the lung to the various peripheral tissues. The alpha (HBA) and beta (HBB) loci determine the structure of the 2 types of polypeptide chains in adult Hemoglobin. The normal adult Hemoglobin tetramer consists of two alpha chains and two beta chains. Mutant beta globin causes sickle cell anemia. Absence

## Target Details

of beta chain causes beta zero thalassemia. Reduced amounts of detectable beta globin causes beta plus thalassemia.

Aliases: Hemoglobin

## Application Details

Application Notes: Recommended dilution: WB:1:1000-1:5000,

Restrictions: For Research Use only

## Handling

Format: Liquid

Buffer: Preservative: 0.03 % Proclin 300  
Constituents: 50 % Glycerol, 0.01M PBS, PH 7.4

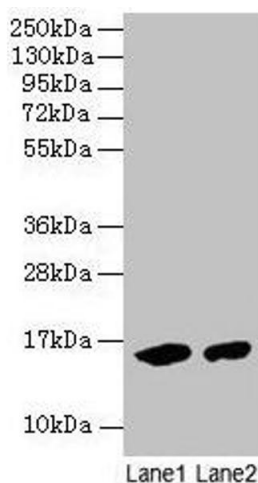
Preservative: ProClin

Precaution of Use: This product contains ProClin: a POISONOUS AND HAZARDOUS SUBSTANCE which should be handled by trained staff only.

Storage: -20 °C,-80 °C

Storage Comment: Upon receipt, store at -20°C or -80°C. Avoid repeated freeze.

## Images



### Western Blotting

**Image 1.** Western blot All lanes: Mouse Hemoglobin antibody at 2 µg/mL Lane 1: Mouse serum at 1: 100 Lane 2: Mouse serum at 1: 1000 Secondary Goat polyclonal to rabbit IgG at 1/15000 dilution Predicted band size: 16 kDa Observed band size: 16 kDa