



[Go to Product page](#)

Datasheet for ABIN7137917
anti-Hemoglobin antibody

2 Images

Overview

Quantity:	100 µg
Target:	Hemoglobin
Reactivity:	Human
Host:	Mouse
Clonality:	Monoclonal
Conjugate:	This Hemoglobin antibody is un-conjugated
Application:	ELISA, Immunohistochemistry (IHC)

Product Details

Immunogen:	Natural Human Hemoglobin
Clone:	4A1B1
Isotype:	IgG1, IgG1 kappa
Cross-Reactivity:	Human
Purification:	Protein G purified

Target Details

Target:	Hemoglobin
Abstract:	Hemoglobin Products
Background:	Background: Hemoglobin is involved in oxygen transport from the lung to the various peripheral tissues. The alpha (HBA) and beta (HBB) loci determine the structure of the 2 types of

Target Details

polypeptide chains in adult Hemoglobin. The normal adult Hemoglobin tetramer consists of two alpha chains and two beta chains. Mutant beta globin causes sickle cell anemia. Absence of beta chain causes beta zero thalassemia. Reduced amounts of detectable beta globin causes beta plus thalassemia.

Aliases: N/A

Application Details

Application Notes: Recommended dilution:IHC:1:50-1:500,

Restrictions: For Research Use only

Handling

Format: Liquid

Buffer: Preservative: 0.03 % Proclin 300
Constituents: 50 % Glycerol, 0.01M PBS, PH 7.4

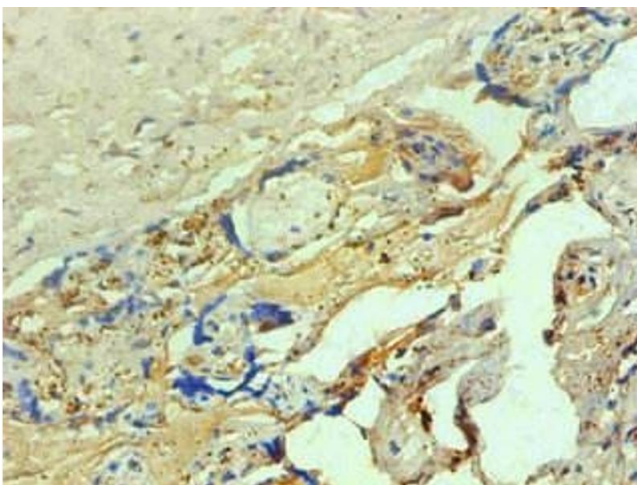
Preservative: ProClin

Precaution of Use: This product contains ProClin: a POISONOUS AND HAZARDOUS SUBSTANCE which should be handled by trained staff only.

Storage: -20 °C,-80 °C

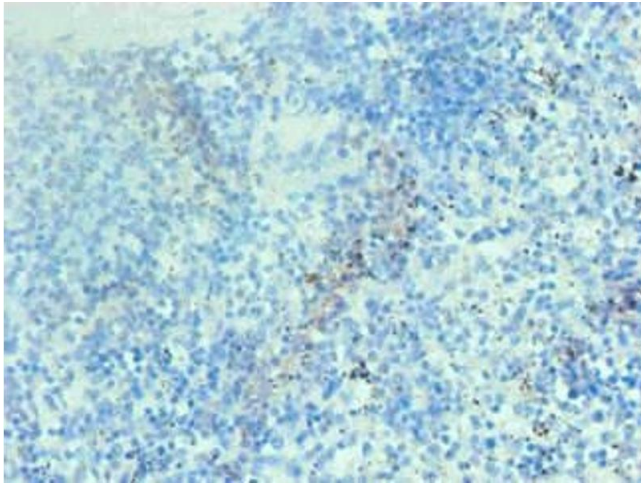
Storage Comment: Upon receipt, store at -20°C or -80°C. Avoid repeated freeze.

Images



Immunohistochemistry

Image 1. Immunohistochemical of paraffin-embedded human placenta tissue using ABIN7137917 at dilution of 1:200



Immunohistochemistry

Image 2. Immunohistochemical of paraffin-embedded human spleen tissue using ABIN7137917 at dilution of 1:200