

Datasheet for ABIN7137919
anti-PPP2CA antibody (N-Term)[Go to Product page](#)

2 Images

Overview

Quantity:	100 µL
Target:	PPP2CA
Binding Specificity:	N-Term
Reactivity:	Human
Host:	Rabbit
Clonality:	Polyclonal
Conjugate:	This PPP2CA antibody is un-conjugated
Application:	Western Blotting (WB), ELISA

Product Details

Immunogen:	Peptide Corresponding to the amino terminal sequence derived from Human PP2A-alpha.
Isotype:	IgG
Cross-Reactivity:	Human, Mouse, Rat
Purification:	Antibodies were produced by immunizing rabbits with synthetic peptide and KLH conjugates. Antibodies were purified by affinity-chromatography using epitope-specific peptide.

Target Details

Target:	PPP2CA
Alternative Name:	PPP2CA (PPP2CA Products)
Background:	Background:

Target Details

The B regulatory subunit might modulate substrate selectivity and catalytic activity, and also might direct the localization of the catalytic enzyme to a particular subcellular compartment.

Yu, X.X. et al. (2001) Mol. Biol. Cell 12, 185-199.

Tolstykh, T. et al. (2000) EMBO J. 19, 5682-5691.

Janssens, V. and Goris, J. (2001) Biochem. J. 353, 417-439.

Aliases: PP2A A antibody, PP2A alpha antibody, PP2A B antibody, PP2A beta antibody, PP2A-alpha antibody, PP2A-beta antibody, PP2AA_HUMAN antibody, PP2Aalpha antibody, PP2AB_HUMAN antibody, PP2Abeta antibody, PP2Ac antibody, PP2CA antibody, PP2Calpha antibody, PP2CB antibody, PPP2CA antibody, PPP2CB antibody, Protein phosphatase 2 catalytic subunit alpha isoform antibody, Protein phosphatase 2 catalytic subunit beta isoform antibody, Protein phosphatase type 2A catalytic subunit antibody, Replication protein C antibody, RP C antibody, RP-C antibody, RPC antibody, Serine/threonine protein phosphatase 2A catalytic subunit alpha isoform antibody, Serine/threonine protein phosphatase 2A catalytic subunit beta isoform antibody, Serine/threonine-protein phosphatase 2A catalytic subunit alpha isoform antibody

UniProt: [P67775](#)

Pathways: [PI3K-Akt Signaling](#), [Mitotic G1-G1/S Phases](#), [Hepatitis C](#), [Toll-Like Receptors Cascades](#)

Application Details

Application Notes: WB:1:500-1:3000,

Restrictions: For Research Use only

Handling

Format: Liquid

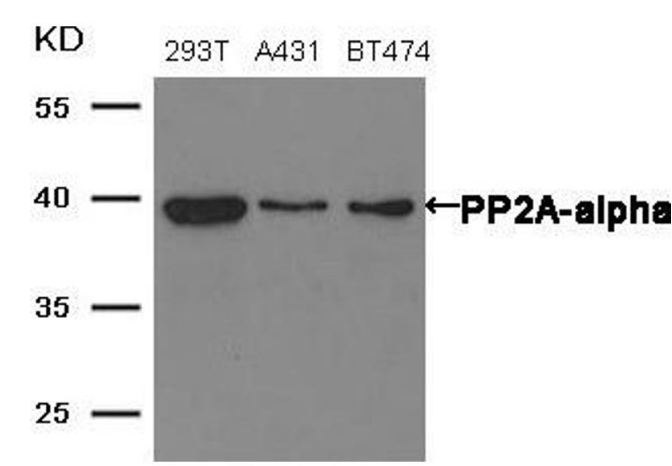
Buffer: Supplied at 1.0 mg/mL in phosphate buffered saline (without Mg²⁺ and Ca²⁺), pH 7.4, 150 mM NaCl, 0.02 % sodium azide and 50 % glycerol.

Preservative: Sodium azide

Precaution of Use: This product contains Sodium azide: a POISONOUS AND HAZARDOUS SUBSTANCE which should be handled by trained staff only.

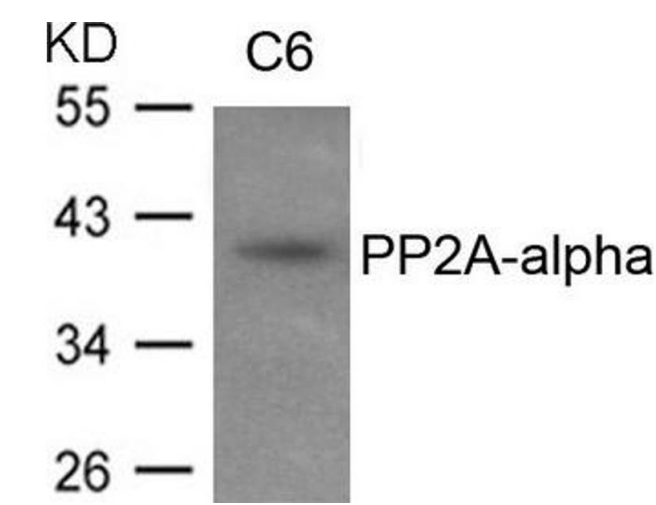
Storage: -20 °C,-80 °C

Storage Comment: Upon receipt, store at -20°C or -80°C. Avoid repeated freeze.



Western Blotting

Image 1. Western blot analysis of extracts from 293T, A431 and BT474 cells using PP2A-alpha antibody.



Western Blotting

Image 2. Western blot analysis of extracts from C6 cells using PP2A-alpha antibody.