



[Go to Product page](#)

Datasheet for ABIN7137920
anti-Cofilin antibody (AA 1-5)

2 Images

Overview

Quantity:	100 µL
Target:	Cofilin (CFL1)
Binding Specificity:	AA 1-5
Reactivity:	Human
Host:	Rabbit
Clonality:	Polyclonal
Conjugate:	This Cofilin antibody is un-conjugated
Application:	Western Blotting (WB), ELISA, Immunohistochemistry (IHC)

Product Details

Immunogen:	Peptide sequence around aa. 1~5 (M-A-S-G-V) derived from Human cofilin.
Isotype:	IgG
Cross-Reactivity:	Human, Mouse, Rat
Purification:	Antibodies were produced by immunizing rabbits with synthetic peptide and KLH conjugates. Antibodies were purified by affinity-chromatography using epitope-specific peptide.

Target Details

Target:	Cofilin (CFL1)
Alternative Name:	CFL1 (CFL1 Products)
Background:	Background: Controls reversibly actin polymerization and depolymerization in a pH -sensitive

Target Details

manner. It has the ability to bind G- and F-actin in a 1:1 ratio of cofilin to actin. It is the major component of intranuclear and cytoplasmic actin rods.

Kobayashi M, et al. (2006) EMBO J 25(4): 713-26.

Wang Y, et al. (2005) Biol Chem 280(13): 12683-9.

Smith-Beckerman DM, et al. (2005) Mol Cell Proteomics: 156-68.

Aliases: 18 kDa phosphoprotein antibody, CFL 1 antibody, CFL antibody, CFL1 antibody, COF1_HUMAN antibody, Cofilin 1 antibody, Cofilin 1 non muscle antibody, Cofilin antibody, Cofilin non muscle isoform antibody, Cofilin-1 antibody, epididymis secretory protein Li 15 antibody, HEL-S-15 antibody, non-muscle isoform antibody, p18 antibody

UniProt: [P23528](#)

Pathways: [Regulation of Cell Size](#), [Tube Formation](#), [Protein targeting to Nucleus](#), [CXCR4-mediated Signaling Events](#)

Application Details

Application Notes: WB:1:500-1:1000, IHC:1:50-1:200,

Restrictions: For Research Use only

Handling

Format: Liquid

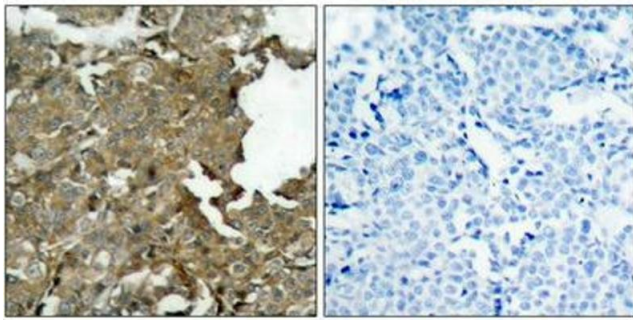
Buffer: Supplied at 1.0 mg/mL in phosphate buffered saline (without Mg²⁺ and Ca²⁺), pH 7.4, 150 mM NaCl, 0.02 % sodium azide and 50 % glycerol.

Preservative: Sodium azide

Precaution of Use: This product contains Sodium azide: a POISONOUS AND HAZARDOUS SUBSTANCE which should be handled by trained staff only.

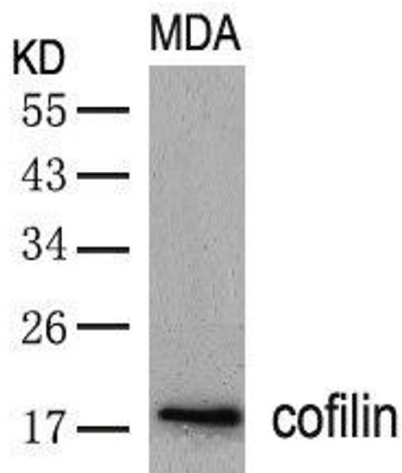
Storage: -20 °C, -80 °C

Storage Comment: Upon receipt, store at -20°C or -80°C. Avoid repeated freeze.



Immunohistochemistry

Image 1. Immunohistochemical analysis of paraffin-embedded human breast carcinoma tissue using cofilin(Ab-3) Antibody(left) or the same antibody preincubated with blocking peptide(right).



Western Blotting

Image 2. Western blot analysis of extracts from MDA cells using cofilin(Ab-3) Antibody.