

Datasheet for ABIN7137921
anti-LIN28A antibody (AA 1-5)



[Go to Product page](#)

1 Image

Overview

Quantity:	100 µL
Target:	LIN28A
Binding Specificity:	AA 1-5
Reactivity:	Human
Host:	Rabbit
Clonality:	Polyclonal
Conjugate:	This LIN28A antibody is un-conjugated
Application:	Western Blotting (WB), ELISA

Product Details

Immunogen:	Peptide sequence around aa. 1~5 (M-G-S-V-S) derived from Human Lin28
Isotype:	IgG
Cross-Reactivity:	Human, Mouse, Rat
Purification:	Antibodies were produced by immunizing rabbits with synthetic peptide and KLH conjugates. Antibodies were purified by affinity-chromatography using epitope-specific peptide.

Target Details

Target:	LIN28A
Alternative Name:	LIN28A (LIN28A Products)
Background:	Background: Acts as a 'translational enhancer', driving specific mRNAs to polysomes and thus

Target Details

increasing the efficiency of protein synthesis. Its association with the translational machinery and target mRNAs results in an increased number of initiation events per molecule of mRNA and, indirectly, in stabilizing the mRNAs. Binds IGF2 mRNA, MYOD1 mRNA, ARBP/36B4 ribosomal protein mRNA and its own mRNA. Essential for skeletal muscle differentiation program through the translational up-regulation of IGF2 expression. Acts as a suppressor of microRNA (miRNA) biogenesis by specifically binding the precursor let-7 (pre-let-7), a miRNA precursor. Acts by binding pre-let-7 and recruiting ZCCHC11/TUT4 uridylyltransferase, leading to the terminal uridylation of pre-let-7. Uridylated pre-let-7 miRNAs fail to be processed by Dicer and undergo degradation. Degradation of pre-let-7 in embryonic stem (ES) cells contributes to the maintenance of ES cells.

Heo I., Joo C., Mol. et al., Cell 32:276-284(2008)

Heo I., Joo C., Kim Y.-K., et al., Cell 138:696-708(2009)

Viswanathan S.R., Powers J.T., et al., Nat. Genet. 41:843-848(2009)

Aliases: AL024421 antibody, CSDD1 antibody, CSDD2 antibody, FLJ12457 antibody, Lin 28 antibody, Lin 28 homolog (C. elegans) antibody, Lin 28 homolog A (C. elegans) antibody, Lin 28 homolog A antibody, Lin 28 homolog antibody, Lin-28A antibody, Lin28 antibody, Lin28, C. elegans, homolog of, A antibody, LIN28A antibody, LN28A_HUMAN antibody, Protein lin-28 homolog A antibody, Protein lin-28 homolog B antibody, RNA binding protein lin 28 antibody, Tex17 antibody, ZCCHC1 antibody, Zinc finger CCHC domain containing 1 antibody, Zinc finger CCHC domain containing protein 1 antibody, Zinc finger CCHC domain-containing protein 1 antibody

UniProt: [Q9H9Z2](#)

Pathways: [Stem Cell Maintenance](#)

Application Details

Application Notes: WB:1:500-1:1000,

Restrictions: For Research Use only

Handling

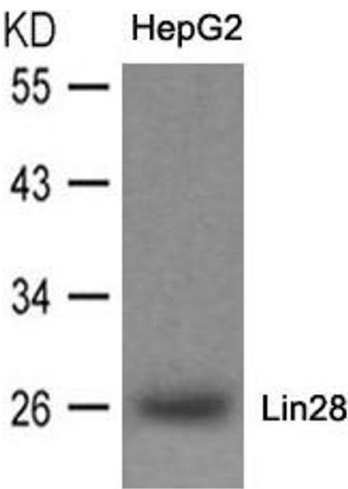
Format: Liquid

Buffer: Supplied at 1.0 mg/mL in phosphate buffered saline (without Mg²⁺ and Ca²⁺), pH 7.4, 150 mM NaCl, 0.02 % sodium azide and 50 % glycerol.

Handling

Preservative:	Sodium azide
Precaution of Use:	This product contains Sodium azide: a POISONOUS AND HAZARDOUS SUBSTANCE which should be handled by trained staff only.
Storage:	-20 °C,-80 °C
Storage Comment:	Upon receipt, store at -20°C or -80°C. Avoid repeated freeze.

Images



Western Blotting

Image 1. Western blot analysis of extracts from HepG2 cells using Lin28 Antibody.