



[Go to Product page](#)

Datasheet for ABIN7137977

anti-EIF1 antibody

1 Image

Overview

Quantity:	100 µL
Target:	EIF1
Reactivity:	Human
Host:	Rabbit
Clonality:	Polyclonal
Conjugate:	This EIF1 antibody is un-conjugated
Application:	Western Blotting (WB), ELISA

Product Details

Immunogen:	Peptide sequence around aa. 4~8 (Q-N-L-N-T) derived from Drosophila Eif1
Isotype:	IgG
Cross-Reactivity:	Drosophila melanogaster
Purification:	Antibodies were produced by immunizing rabbits with synthetic peptide and KLH conjugates. Antibodies were purified by affinity-chromatography using epitope-specific peptide.

Target Details

Target:	EIF1
Alternative Name:	EIF1 (EIF1 Products)
Background:	Background: Necessary for scanning and involved in initiation site selection. Promotes the assembly of 48S ribosomal complexes at the authentic initiation codon of a conventional capped mRNA

Target Details

Sheikh M.S., Fernandez-Salas E., Yu M., Hussain A., Fornace A.J. Jr. J. Biol. Chem. 274:16487-16493(1999)

Mendell J.T., Medghalchi S.M., Lake R.G., Noensie E.N., Dietz H.C. Mol. Cell. Biol. 20:8944-8957(2000)

Aliases: EIF1 antibody, SUI1Eukaryotic translation initiation factor 1 antibody, eIF1 antibody, A121 antibody, Protein translation factor SUI1 homolog antibody, Sui1iso1 antibody

UniProt: [P41567](#)

Application Details

Application Notes: WB:1:500-1:1000,

Restrictions: For Research Use only

Handling

Format: Liquid

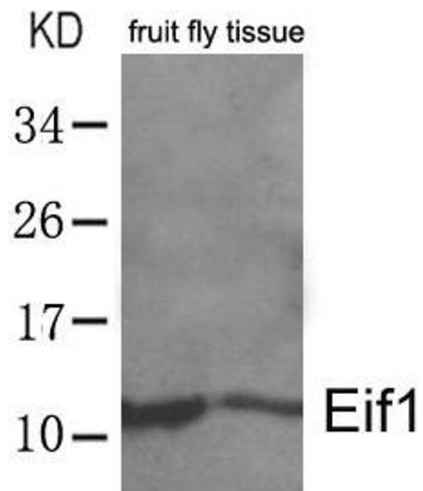
Buffer: Supplied at 1.0 mg/mL in phosphate buffered saline (without Mg²⁺ and Ca²⁺), pH 7.4, 150 mM NaCl, 0.02 % sodium azide and 50 % glycerol.

Preservative: Sodium azide

Precaution of Use: This product contains Sodium azide: a POISONOUS AND HAZARDOUS SUBSTANCE which should be handled by trained staff only.

Storage: -20 °C,-80 °C

Storage Comment: Upon receipt, store at -20°C or -80°C. Avoid repeated freeze.



Western Blotting

Image 1. Western blot analysis of extracts from whole fruit fly(*drosophila melanogaster*) tissue lysate using Eif1 Antibody.