



[Go to Product page](#)

Datasheet for ABIN7138022

## anti-Niban antibody

### 2 Images

#### Overview

Quantity:	100 µL
Target:	Niban (FAM129A)
Reactivity:	Human
Host:	Rabbit
Clonality:	Polyclonal
Conjugate:	This Niban antibody is un-conjugated
Application:	Western Blotting (WB), Immunofluorescence (IF), ELISA

#### Product Details

Immunogen:	peptide sequence around aa. 912~916 (K-E-G-E-G) derived from Human Niban.
Isotype:	IgG
Cross-Reactivity:	Human
Purification:	Antibodies were produced by immunizing rabbits with synthetic peptide and KLH conjugates. Antibodies were purified by affinity-chromatography using epitope-specific peptide.

#### Target Details

Target:	Niban (FAM129A)
Alternative Name:	FAM129A ( <a href="#">FAM129A Products</a> )
Background:	Background: Regulates phosphorylation of a number of proteins involved in translation regulation including EIF2A, EIF4EBP1 and RPS6KB1. May be involved in the endoplasmic reticulum stress response

## Target Details

---

Vill

Aliases: NIBAN1 antibody, C1orf24 antibody, FAM129A antibody, NIBAN antibody, GIG39 antibody, Protein Niban 1 antibody, Cell growth-inhibiting gene 39 protein antibody, Protein FAM129A antibody

---

UniProt: [Q9BZQ8](#)

---

## Application Details

---

Application Notes: WB:1:500-1:1000, IF:1:100-1:200,

Restrictions: For Research Use only

---

## Handling

---

Format: Liquid

Buffer: Supplied at 1.0 mg/mL in phosphate buffered saline (without Mg<sup>2+</sup> and Ca<sup>2+</sup>), pH 7.4, 150 mM NaCl, 0.02 % sodium azide and 50 % glycerol.

Preservative: Sodium azide

Precaution of Use: This product contains Sodium azide: a POISONOUS AND HAZARDOUS SUBSTANCE which should be handled by trained staff only.

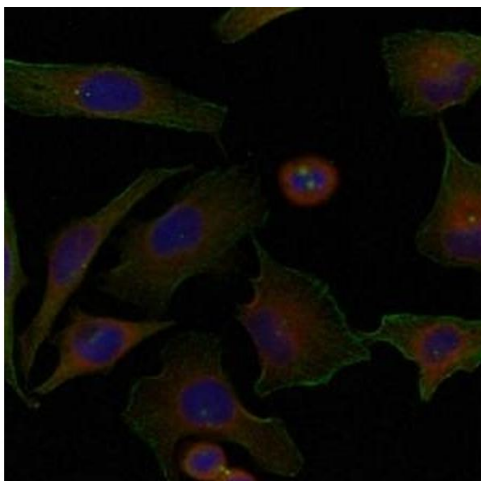
Storage: -20 °C,-80 °C

Storage Comment: Upon receipt, store at -20°C or -80°C. Avoid repeated freeze.

---

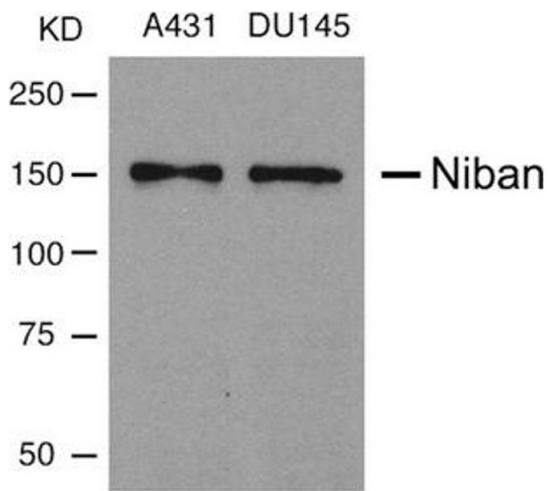
## Images

---



### Immunofluorescence

**Image 1.** Immunofluorescence staining of methanol-fixed HeLa cells using Niban Antibody.



### Western Blotting

**Image 2.** Western blot analysis of extracts from A431 and DU145 cells using Niban Antibody.