



[Go to Product page](#)

Datasheet for ABIN7138126

## anti-DAB1 antibody

### 1 Image

#### Overview

Quantity:	100 µL
Target:	DAB1
Reactivity:	Human
Host:	Rabbit
Clonality:	Polyclonal
Conjugate:	This DAB1 antibody is un-conjugated
Application:	ELISA, Immunohistochemistry (IHC)

#### Product Details

Immunogen:	Peptide sequence around aa.230~234 (G-V-Y-D-V) derived from Human Dab1.
Isotype:	IgG
Cross-Reactivity:	Human, Mouse, Rat
Purification:	Antibodies were produced by immunizing rabbits with synthetic peptide and KLH conjugates. Antibodies were purified by affinity-chromatography using epitope-specific peptide.

#### Target Details

Target:	DAB1
Alternative Name:	DAB1 ( <a href="#">DAB1 Products</a> )
Background:	Background: The laminar organization of multiple neuronal types in the cerebral cortex is required for normal cognitive function. In mice, the disabled-1 gene plays a central role in brain development, directing the migration of cortical neurons past previously formed neurons to

## Target Details

---

reach their proper layer. This gene is similar to disabled-1, and the protein encoded by this gene is thought to be a signal transducer that interacts with protein kinase pathways to regulate neuronal positioning in the developing brain. Alternatively spliced transcript variants of this gene have been reported, but their full length nature has not been determined.

Kelian Chen, et.al. (2003) J. Cell Sci , 117: 4527 - 4536.

Vera Strasser, et.al. (2004) Mol. Cell. Biol , 24: 1378 - 1386.

Izhar Ben-Shlomo, et.al. (2003) Sci. STKE , 2003: 9.

H. M. Kim, et.al. (2002) PNAS , 99: 4020.

Aliases: Dab 1 antibody, Dab reelin signal transducer 1 antibody, Dab, reelin signal transducer, homolog 1 (Drosophila) antibody, Dab1 antibody, DAB1\_HUMAN antibody, Disabled homolog 1 antibody, Disabled homolog 1 Drosophila antibody, Scm antibody, Scr antibody, Scrambler antibody, Yot antibody, Yotari antibody

---

UniProt: [O75553](#)

## Application Details

---

Application Notes: IHC:1:50-1:100,

Restrictions: For Research Use only

## Handling

---

Format: Liquid

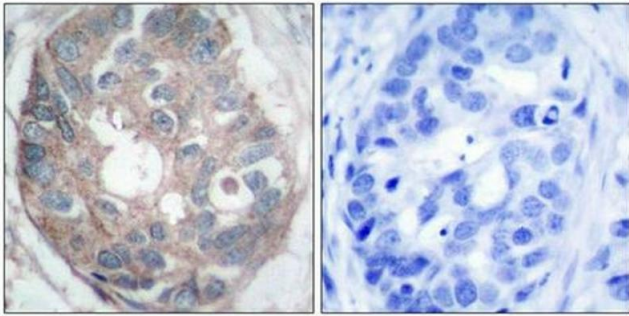
Buffer: Supplied at 1.0 mg/mL in phosphate buffered saline (without Mg<sup>2+</sup> and Ca<sup>2+</sup>), pH 7.4, 150 mM NaCl, 0.02 % sodium azide and 50 % glycerol.

Preservative: Sodium azide

Precaution of Use: This product contains Sodium azide: a POISONOUS AND HAZARDOUS SUBSTANCE which should be handled by trained staff only.

Storage: -20 °C,-80 °C

Storage Comment: Upon receipt, store at -20°C or -80°C. Avoid repeated freeze.



### Immunohistochemistry

**Image 1.** Immunohistochemical analysis of paraffin-embedded human breast carcinoma tissue using Dab1 (Ab-232) Antibody(left) or the same antibody preincubated with blocking peptide(right).