



[Go to Product page](#)

Datasheet for ABIN7138139

anti-Prolactin Receptor antibody

1 Image

Overview

Quantity:	100 µL
Target:	Prolactin Receptor (PRLR)
Reactivity:	Human
Host:	Rabbit
Clonality:	Polyclonal
Conjugate:	This Prolactin Receptor antibody is un-conjugated
Application:	Western Blotting (WB), ELISA

Product Details

Immunogen:	Peptide sequence around aa.25~29 (Q-L-P-P-G) derived from Human PRLR
Isotype:	IgG
Cross-Reactivity:	Human
Purification:	Antibodies were produced by immunizing rabbits with synthetic peptide and KLH conjugates. Antibodies were purified by affinity-chromatography using epitope-specific peptide.

Target Details

Target:	Prolactin Receptor (PRLR)
Alternative Name:	PRLR (PRLR Products)
Background:	Background: This is a receptor for the anterior pituitary hormone prolactin (PRL). Isoform 4 is unable to transduce prolactin signaling. Isoform 6 is unable to transduce prolactin signaling

Target Details

Boutin J.M,et al.Mol. Endocrinol. 3:1455-1461(1989)

Kline J.B,et al.J. Biol. Chem. 274:35461-35468(1999)

Hu Z.Z,et al.J. Clin. Endocrinol. Metab. 84:1153-1156(1999)

Aliases: AI987712 antibody, CLONE SPM213 antibody, CPRLP antibody, Delta 4-delta 7/11 truncated prolactin receptor antibody, Delta 4-SF1b truncated prolactin receptor antibody, HPRL antibody, hPRL receptor antibody, hPRLrl antibody, Lactogen receptor antibody, MFAB antibody, MGC105486 antibody, OPR antibody, OTTHUMP00000115998 antibody, Pr-1 antibody, Pr-3 antibody, PRL R antibody, PRL-R antibody, PRLR antibody, Prlr-rs1 antibody, PRLR_HUMAN antibody, Prolactin receptor a antibody, Prolactin receptor antibody, Prolactin receptor delta 7/11 antibody, RATPRLR antibody, Secreted prolactin binding protein antibody, Truncated testis-specific box 1-C prolactin receptor antibody, wu:fj65c07 antibody

UniProt: [P16471](#)

Pathways: [JAK-STAT Signaling](#), [Response to Growth Hormone Stimulus](#)

Application Details

Application Notes: WB:1:500-1:1000,

Restrictions: For Research Use only

Handling

Format: Liquid

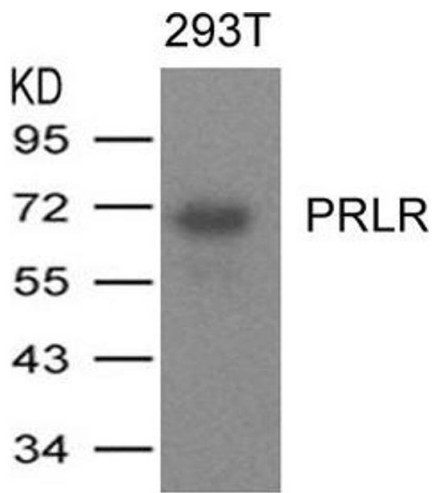
Buffer: Supplied at 1.0 mg/mL in phosphate buffered saline (without Mg²⁺ and Ca²⁺), pH 7.4, 150 mM NaCl, 0.02 % sodium azide and 50 % glycerol.

Preservative: Sodium azide

Precaution of Use: This product contains Sodium azide: a POISONOUS AND HAZARDOUS SUBSTANCE which should be handled by trained staff only.

Storage: -20 °C,-80 °C

Storage Comment: Upon receipt, store at -20°C or -80°C. Avoid repeated freeze.



Western Blotting

Image 1. Western blot analysis of extracts from 293T cells expressing human PRLR protein using PRLR Antibody.