

Datasheet for ABIN7138193

anti-GFI1B antibody**1** Image[Go to Product page](#)

Overview

Quantity:	100 µL
Target:	GFI1B
Reactivity:	Human
Host:	Rabbit
Clonality:	Polyclonal
Conjugate:	This GFI1B antibody is un-conjugated
Application:	Western Blotting (WB), ELISA

Product Details

Immunogen:	Peptide sequence around aa.322~326(H-R-E-S-Q) derived from Human GFI1b.
Isotype:	IgG
Cross-Reactivity:	Human, Mouse, Rat
Purification:	Antibodies were produced by immunizing rabbits with synthetic peptide and KLH conjugates. Antibodies were purified by affinity-chromatography using epitope-specific peptide.

Target Details

Target:	GFI1B
Alternative Name:	GFI1B (GFI1B Products)
Background:	Background: Essential proto-oncogenic transcriptional regulator necessary for development and differentiation of erythroid and megakaryocytic lineages. Transcriptional repressor or activator

Target Details

depending on both promoter and cell type context, represses promoter activity of SOCS1 and SOCS3 and thus, may regulate cytokine signaling pathways. Cooperates with GATA1 to repress target gene transcription, such as the apoptosis regulator BCL2L1, GFI1B silencing in leukemic cell lines markedly increase apoptosis rate. Inhibits down-regulation of MYC and MYB as well as the cyclin-dependent kinase inhibitor CDKN1A/P21WAF1 in IL6-treated myelomonocytic cells. Represses expression of GATA3 in T-cell lymphomas and inhibits GATA1-mediated transcription, as GATA1 also mediates erythroid GFI1B transcription, both GATA1 and GFI1B participate in a feedback regulatory pathway controlling the expression of GFI1B gene in erythroid cells. Suppresses GATA1-mediated stimulation of GFI1B promoter through protein interaction. Binds to gamma-satellite DNA and to its own promoter, auto-repressing its own expression. Alters histone methylation by recruiting histone methyltransferase to target genes promoters. Plays a role in heterochromatin formation.

Osawa M., Yamaguchi T., Nakamura Y. Iwama A. Blood 100:2769-2777(2002)

Huang D.-Y., Kuo Y.-Y., Chang Z.-F. Nucleic Acids Res. 33:5331-5342(2005)

Vassen L., Fiolka K., Moeroey T. EMBO J. 25:2409-2419(2006)

Aliases: GFI 1B antibody, gfi1b antibody, GFI1B protein antibody, GFI1B_HUMAN antibody, Growth factor independent 1B protein antibody, Growth factor independent 1B transcription repressor antibody, Growth factor independent protein 1B antibody, OTTHUMP00000022443 antibody, OTTHUMP00000022444 antibody, OTTHUMP000000235527 antibody, Potential regulator of CDKN1A antibody, Potential regulator of CDKN1A translocated in CML antibody, Translocated in CML antibody, Zinc finger protein Gfi-1b antibody

UniProt: [Q5VTD9](#)

Pathways: [Cellular Response to Molecule of Bacterial Origin](#)

Application Details

Application Notes: WB:1:500-1:1000,

Restrictions: For Research Use only

Handling

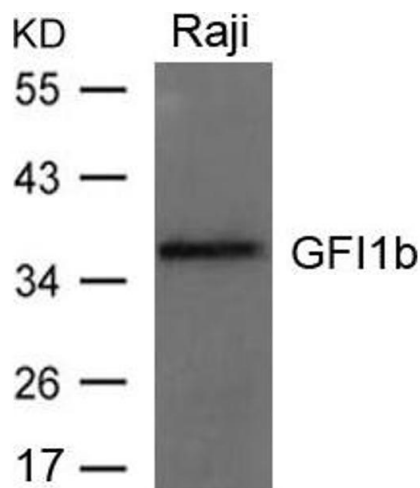
Format: Liquid

Buffer: Supplied at 1.0 mg/mL in phosphate buffered saline (without Mg²⁺ and Ca²⁺), pH 7.4, 150 mM NaCl, 0.02 % sodium azide and 50 % glycerol.

Handling

Preservative:	Sodium azide
Precaution of Use:	This product contains Sodium azide: a POISONOUS AND HAZARDOUS SUBSTANCE which should be handled by trained staff only.
Storage:	-20 °C,-80 °C
Storage Comment:	Upon receipt, store at -20°C or -80°C. Avoid repeated freeze.

Images



Western Blotting

Image 1. Western blot analysis of extracts from Raji cells using GFI1b Antibody.