



## Datasheet for ABIN7138212 anti-CPI-17 antibody



[Go to Product page](#)

### 1 Image

#### Overview

Quantity:	100 µL
Target:	CPI-17 (PPP1R14A)
Reactivity:	Human
Host:	Rabbit
Clonality:	Polyclonal
Conjugate:	This CPI-17 antibody is un-conjugated
Application:	ELISA, Immunofluorescence (IF)

#### Product Details

Immunogen:	Peptide sequence around aa.36~40 (R-V-T-V-K) derived from Human CPI17a.
Isotype:	IgG
Cross-Reactivity:	Human, Mouse, Rat
Purification:	Antibodies were produced by immunizing rabbits with synthetic peptide and KLH conjugates. Antibodies were purified by affinity-chromatography using epitope-specific peptide.

#### Target Details

Target:	CPI-17 (PPP1R14A)
Alternative Name:	PPP1R14A ( <a href="#">PPP1R14A Products</a> )
Background:	Background: Inhibitor of PPP1CA. Has over 1000-fold higher inhibitory activity when phosphorylated, creating a molecular switch for regulating the phosphorylation status of PPP1CA substrates and smooth muscle contraction.

## Target Details

---

Hagerty L, et al. (2007) J Biol Chem. 2007, 282(7):4884-93

Seok YM, et al. (2008) J Pharmacol Exp Ther.

Niiron N et al. (2003) Biochem J. 2003, 369(Pt 1):117-28

Aliases: 17 kDa PKC-potentiated inhibitory protein of PP1 antibody, 17-KDa protein antibody, 17 kDa PKC potentiated inhibitory protein of PP1 antibody, CPI 17 alpha antibody, CPI 17 antibody, CPI 17alpha antibody, CPI-17 antibody, CPI17 alpha antibody, CPI17 antibody, PKC potentiated inhibitory protein of PP1 antibody, PKC potentiated inhibitory protein of PP1, 17-KD antibody, PP14A\_HUMAN antibody, PPP1INL antibody, Ppp1r14a antibody, Protein kinase C-potentiated inhibitor of protein phosphatase 1, 17-KD antibody, Protein kinase C-potentiated inhibitor protein of 17 kDa antibody, Protein phosphatase 1 antibody, Protein phosphatase 1 regulatory (inhibitor) subunit 14A antibody, Protein phosphatase 1 regulatory subunit 14A antibody, Regulatory subunit 14A antibody

---

UniProt: [Q96A00](#)

## Application Details

---

Application Notes: IF:1:100-1:200,

Restrictions: For Research Use only

## Handling

---

Format: Liquid

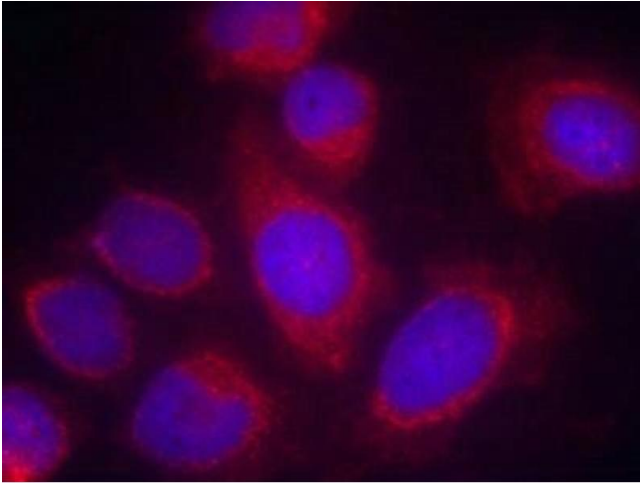
Buffer: Supplied at 1.0 mg/mL in phosphate buffered saline (without Mg<sup>2+</sup> and Ca<sup>2+</sup>), pH 7.4, 150 mM NaCl, 0.02 % sodium azide and 50 % glycerol.

Preservative: Sodium azide

Precaution of Use: This product contains Sodium azide: a POISONOUS AND HAZARDOUS SUBSTANCE which should be handled by trained staff only.

Storage: -20 °C,-80 °C

Storage Comment: Upon receipt, store at -20°C or -80°C. Avoid repeated freeze.



### Immunofluorescence

**Image 1.** Immunofluorescence staining of methanol-fixed HeLa cells using CPI17a(Ab-38) Antibody.