



[Go to Product page](#)

Datasheet for ABIN7138404
anti-YBX1 antibody (pSer102)

1 Image

Overview

Quantity:	100 µL
Target:	YBX1
Binding Specificity:	pSer102
Reactivity:	Human
Host:	Rabbit
Clonality:	Polyclonal
Conjugate:	This YBX1 antibody is un-conjugated
Application:	Western Blotting (WB), ELISA

Product Details

Immunogen:	Peptide sequence around phosphorylation site of Serine 102(L-R-S(p)-V-G) derived from Human YB1.
Isotype:	IgG
Cross-Reactivity:	Human, Mouse, Rat
Purification:	Antibodies were produced by immunizing rabbits with synthetic phosphopeptide and KLH conjugates. Antibodies were purified by affinity-chromatography using epitope-specific phosphopeptide. Non-phospho specific antibodies were removed by chromatography using

Target Details

Target:	YBX1
Alternative Name:	YBX1 (YBX1 Products)

Target Details

Background:

Background:

YB-1 is a nuclear protein that binds to splice sites in pre-mRNA and regulates splice site selection. Binds and stabilizes cytoplasmic mRNA. Contributes to the regulation of translation by modulating the interaction between the mRNA and eukaryotic initiation factors CCAAT-containing Y-box of HLA class II genes. Component of cytoplasmic messenger ribonucleoprotein particles (mRNPs). Interacts with AKT1, SFRS9, THOC4, MSH2, XRCC5, WRN and NCL. Can bind to DNA as a homomeric form, (EFI-A)_n or as a heteromeric form in association with EFI-B. Homodimer in the presence of ATP.

Sakura H., Gene 73:499-507(1988).

Didier D.K. Proc. Natl. Acad. Sci. U.S.A. 85:7322-7326(1988).

Kolluri R., Nucleic Acids Res. 19:4771-4771(1991).

Aliases: BP 8 antibody, CBF-A antibody, CCAAT binding transcription factor I subunit A antibody, CCAAT-binding transcription factor I subunit A antibody, CSDA2 antibody, CSDB antibody, DBPB antibody, DNA binding protein B antibody, DNA-binding protein B antibody, EFI-A antibody, Enhancer factor I subunit A antibody, MDR NF1 antibody, MGC104858 antibody, MGC110976 antibody, MGC117250 antibody, NSEP 1 antibody, NSEP1 antibody, Nuclease sensitive element binding protein 1 antibody, Nuclease-sensitive element-binding protein 1 antibody, p50 antibody, Q15905 antibody, Y-box binding protein 1 antibody, Y-box transcription factor antibody, Y-box-binding protein 1 antibody, YB 1 antibody, YB-1 antibody, YBOX1_HUMAN antibody, YBX 1 antibody, ybx1 antibody

UniProt:

[P67809](#)

Pathways:

[Regulation of Muscle Cell Differentiation](#)

Application Details

Application Notes:

WB:1:500-1:1000,

Restrictions:

For Research Use only

Handling

Format:

Liquid

Buffer:

Rabbit IgG in phosphate buffered saline (without Mg²⁺ and Ca²⁺), pH 7.4, 150 mM NaCl, 0.02 % sodium azide and 50 % glycerol.

Preservative:

Sodium azide

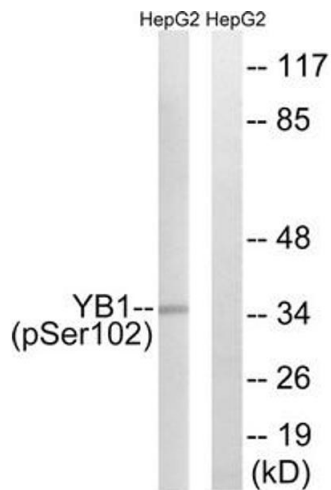
Handling

Precaution of Use: This product contains Sodium azide: a POISONOUS AND HAZARDOUS SUBSTANCE which should be handled by trained staff only.

Storage: -20 °C,-80 °C

Storage Comment: Upon receipt, store at -20°C or -80°C. Avoid repeated freeze.

Images



Western Blotting

Image 1. Western blot analysis of extracts from HepG2 cells treated with PMA using YB1 (Phospho-Ser102) Antibody. The lane on the right is treated with the antigen-specific peptide.