



[Go to Product page](#)

Datasheet for ABIN7138407
anti-GATA4 antibody (pSer105)

1 Image

Overview

Quantity:	100 µL
Target:	GATA4
Binding Specificity:	pSer105
Reactivity:	Human
Host:	Rabbit
Clonality:	Polyclonal
Conjugate:	This GATA4 antibody is un-conjugated
Application:	Western Blotting (WB), ELISA

Product Details

Immunogen:	Peptide sequence around phosphorylation site of Serine 105(P-V-S(p)-P-R) derived from Human GATA4.
Isotype:	IgG
Cross-Reactivity:	Human, Mouse, Rat
Purification:	Antibodies were produced by immunizing rabbits with synthetic phosphopeptide and KLH conjugates. Antibodies were purified by affinity-chromatography using epitope-specific phosphopeptide. Non-phospho specific antibodies were removed by chromatography using

Target Details

Target:	GATA4
Alternative Name:	GATA4 (GATA4 Products)

Target Details

Background: Background: Transcriptional activator. Binds to the consensus sequence 5'-AGATAG-3'. Acts as a transcriptional activator of ANF in cooperation with NKX2-5. Promotes cardiac myocyte enlargement.

Aliases: ASD2 antibody, GATA 4 antibody, GATA binding protein 4 antibody, GATA-binding factor 4 antibody, gata4 antibody, GATA4_HUMAN antibody, MGC126629 antibody, Transcription factor GATA 4 antibody, Transcription factor GATA-4 antibody, Transcription factor GATA4 antibody, VSD1 antibody

UniProt: [P43694](#)

Pathways: [Peptide Hormone Metabolism](#), [Carbohydrate Homeostasis](#)

Application Details

Application Notes: WB:1:500-1:1000,

Restrictions: For Research Use only

Handling

Format: Liquid

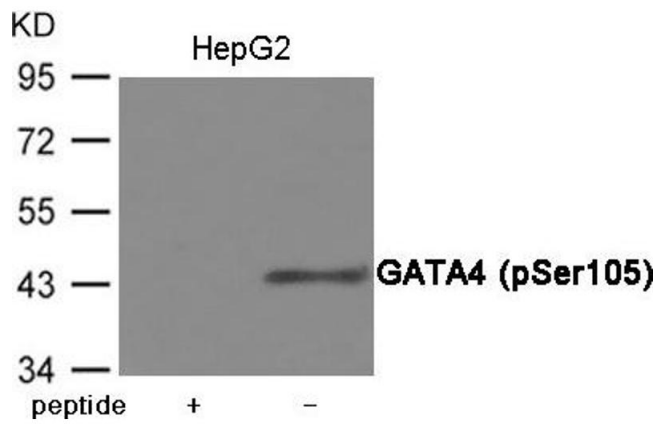
Buffer: Supplied at 1.0 mg/mL in phosphate buffered saline (without Mg²⁺ and Ca²⁺), pH 7.4, 150 mM NaCl, 0.02 % sodium azide and 50 % glycerol.

Preservative: Sodium azide

Precaution of Use: This product contains Sodium azide: a POISONOUS AND HAZARDOUS SUBSTANCE which should be handled by trained staff only.

Storage: -20 °C,-80 °C

Storage Comment: Upon receipt, store at -20°C or -80°C. Avoid repeated freeze.



Western Blotting

Image 1. Western blot analysis of extracts from HepG2 cells using GATA4 (Phospho-Ser105) Antibody. The lane on the left is treated with the antigen-specific peptide.