

Datasheet for ABIN7138427
anti-GATA1 antibody (pSer142)[Go to Product page](#)

3 Images

Overview

Quantity:	100 µL
Target:	GATA1
Binding Specificity:	pSer142
Reactivity:	Human
Host:	Rabbit
Clonality:	Polyclonal
Conjugate:	This GATA1 antibody is un-conjugated
Application:	Western Blotting (WB), ELISA, Immunohistochemistry (IHC), Immunofluorescence (IF)

Product Details

Immunogen:	Peptide sequence around phosphorylation site of serine 142 (R-L-S(p)-P-D) derived from Human GATA1.
Isotype:	IgG
Cross-Reactivity:	Human, Mouse, Rat
Purification:	Antibodies were produced by immunizing rabbits with synthetic phosphopeptide and KLH conjugates. Antibodies were purified by affinity-chromatography using epitope-specific phosphopeptide. Non-phospho specific antibodies were removed by chromatography using

Target Details

Target:	GATA1
Alternative Name:	GATA1 (GATA1 Products)

Target Details

Background:	<p>Background:</p> <p>GATA1 encodes a protein which belongs to the GATA family of transcription factors. The protein plays an important role in erythroid development by regulating the switch of fetal hemoglobin to adult hemoglobin. Mutations in this gene have been associated with X-linked dyserythropoietic anemia and thrombocytopenia.</p> <p>Zon LI, et al. (1990) Proc Natl Acad. Sci USA. 87: 668-672.</p> <p>Trainor C D, et al. (1990) Nature. 343: 92-96.</p> <p>Nichols K E, et al. (2000) Nat Genet. 24: 266-270.</p> <p>Aliases: Anemia, X-linked, without thrombocytopenia, included antibody, ERYF 1 antibody, Eryf1 antibody, Erythroid transcription factor antibody, Erythroid transcription factor 1 antibody, GATA 1 antibody, GATA binding factor 1 antibody, GATA binding protein 1 (globin transcription factor 1) antibody, GATA binding protein 1 antibody, GATA-1 antibody, GATA-binding factor 1 antibody, GATA1 antibody, GATA1_HUMAN antibody, GF 1 antibody, GF-1 antibody, GF1 antibody, Globin transcription factor 1 antibody, NF E1 antibody, NF E1 DNA binding protein antibody, NF-E1 DNA-binding protein antibody, NFE 1 antibody, NFE1 antibody, Nuclear factor erythroid 1 antibody, Transcription factor GATA1 antibody, XLANP antibody, XLTDA antibody, XLTT antibody</p>
UniProt:	P15976
Pathways:	Cellular Response to Molecule of Bacterial Origin

Application Details

Application Notes:	WB:1:500-1:1000, IHC:1:50-1:100, IF:1:100-1:200,
Restrictions:	For Research Use only

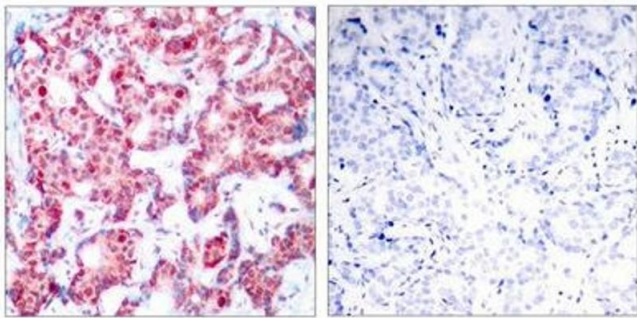
Handling

Format:	Liquid
Buffer:	Supplied at 1.0 mg/mL in phosphate buffered saline (without Mg ²⁺ and Ca ²⁺), pH 7.4, 150 mM NaCl, 0.02 % sodium azide and 50 % glycerol.
Preservative:	Sodium azide
Precaution of Use:	This product contains Sodium azide: a POISONOUS AND HAZARDOUS SUBSTANCE which should be handled by trained staff only.

Handling

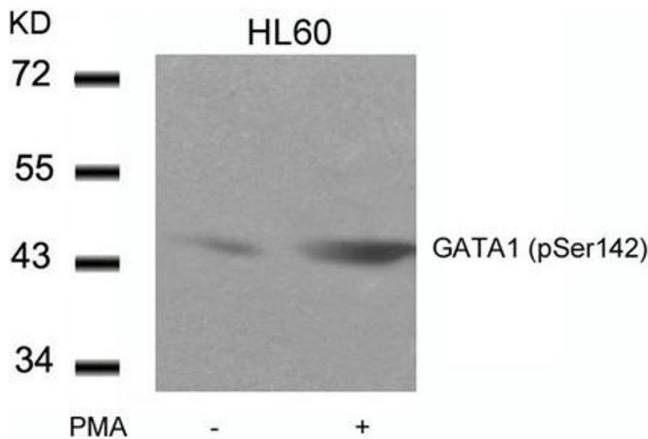
Storage:	-20 °C,-80 °C
Storage Comment:	Upon receipt, store at -20°C or -80°C. Avoid repeated freeze.

Images



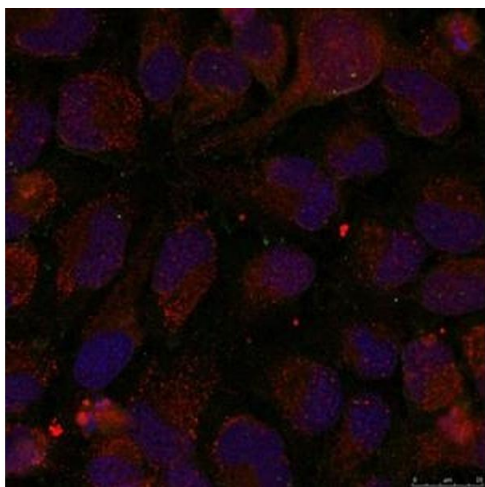
Immunohistochemistry

Image 1. Immunohistochemical analysis of paraffin-embedded human breast carcinoma tissue using GATA1(Phospho-Ser142) Antibody(left) or the same antibody preincubated with blocking peptide(right).



Western Blotting

Image 2. Western blot analysis of extracts from HL60 cells untreated or treated with PMA using GATA1(Phospho-Ser142) Antibody.



Immunofluorescence

Image 3. Immunofluorescence staining of methanol-fixed Hela cells using GATA1(Phospho-Ser142) Antibody.