

Datasheet for ABIN7138431
anti-Cyclin B1 antibody (pSer147)

3 Images

[Go to Product page](#)

Overview

Quantity:	100 µL
Target:	Cyclin B1 (CCNB1)
Binding Specificity:	pSer147
Reactivity:	Human
Host:	Rabbit
Clonality:	Polyclonal
Conjugate:	This Cyclin B1 antibody is un-conjugated
Application:	Western Blotting (WB), Immunohistochemistry (IHC), Immunofluorescence (IF), ELISA

Product Details

Immunogen:	Peptide sequence around phosphorylation site of Serine 147 (A-F-S(p)-D-V) derived from Human Cyclin B1.
Isotype:	IgG
Cross-Reactivity:	Human
Purification:	Antibodies were produced by immunizing rabbits with synthetic phosphopeptide and KLH conjugates. Antibodies were purified by affinity-chromatography using epitope-specific phosphopeptide. Non-phospho specific antibodies were removed by chromatography using

Target Details

Target:	Cyclin B1 (CCNB1)
Alternative Name:	CCNB1 (CCNB1 Products)

Target Details

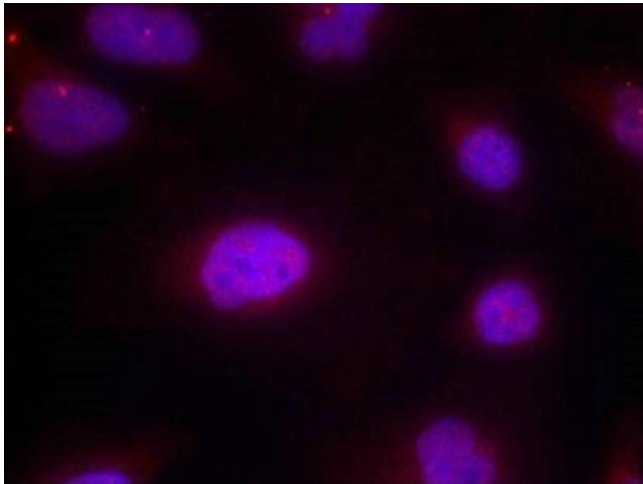
Background:	<p>Background: The protein encoded by Cyclin B1 is a regulatory protein involved in mitosis. The gene product complexes with p34(cdc2) to form the maturation-promoting factor (MPF). Two alternative transcripts have been found, a constitutively expressed transcript and a cell cycle-regulated transcript, that is expressed predominantly during G2/M phase. The different transcripts result from the use of alternate transcription initiation sites.</p> <p>Norbury, C. and Nurse, P. (1992) Annu. Rev. Biochem. 61, 441-470.</p> <p>Atherton-Fessler, S. et al. (1993) Mol. Cell. Biol. 13, 1675-1685.</p> <p>Galaktionov, K. et al. (1995) Genes Dev. 9, 1046-1058.</p> <p>Aliases: CCNB 1 antibody, CCNB antibody, ccnb1 antibody, CCNB1_HUMAN antibody, Cyclin B1 antibody, G2 mitotic specific cyclin B1 antibody, G2/mitotic-specific cyclin-B1 antibody</p>
UniProt:	P14635
Pathways:	Cell Division Cycle , AMPK Signaling , Mitotic G1-G1/S Phases , M Phase

Application Details

Application Notes:	WB:1:500-1:1000, IHC:1:50-1:100, IF:1:100-1:200,
Restrictions:	For Research Use only

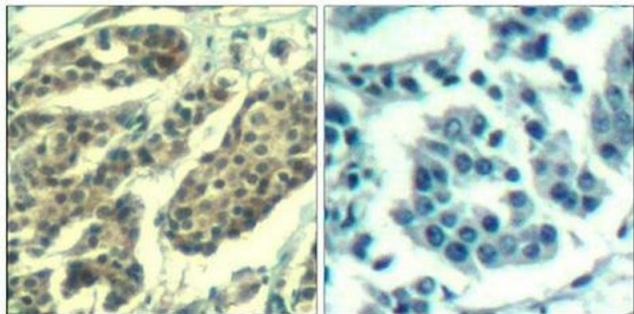
Handling

Format:	Liquid
Buffer:	Supplied at 1.0 mg/mL in phosphate buffered saline (without Mg ²⁺ and Ca ²⁺), pH 7.4, 150 mM NaCl, 0.02 % sodium azide and 50 % glycerol.
Preservative:	Sodium azide
Precaution of Use:	This product contains Sodium azide: a POISONOUS AND HAZARDOUS SUBSTANCE which should be handled by trained staff only.
Storage:	-20 °C, -80 °C
Storage Comment:	Upon receipt, store at -20°C or -80°C. Avoid repeated freeze.



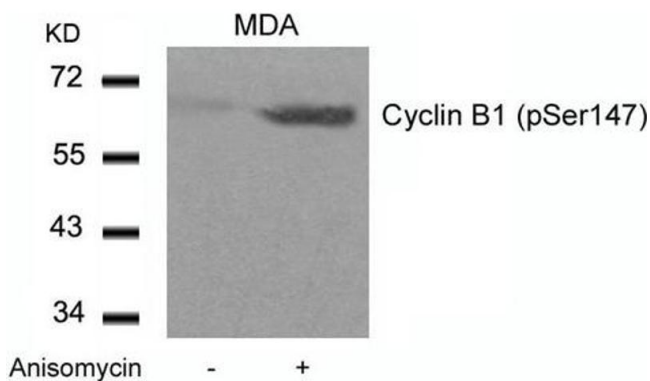
Immunofluorescence

Image 1. Immunofluorescence staining of methanol-fixed HeLa cells using Cyclin B1(phospho-Ser147) Antibody.



Immunohistochemistry

Image 2. Immunohistochemical analysis of paraffin-embedded human breast carcinoma tissue using Cyclin B1(Phospho-Ser147) Antibody(left) or the same antibody preincubated with blocking peptide(right).



Western Blotting

Image 3. Western blot analysis of extracts from MDA cells untreated or treated with Anisomycin using Cyclin B1(phospho-Ser147) Antibody.