

Datasheet for ABIN7138432  
**anti-CDC25B antibody (pSer149)**[Go to Product page](#)

## 2 Images

## Overview

Quantity:	100 µL
Target:	CDC25B
Binding Specificity:	pSer149
Reactivity:	Mouse
Host:	Rabbit
Clonality:	Polyclonal
Conjugate:	This CDC25B antibody is un-conjugated
Application:	Western Blotting (WB), ELISA

## Product Details

Immunogen:	Peptide sequence around phosphorylation site of Serine 149 (F-R-S(p)-L-P) derived from Mouse Cdc25B.
Isotype:	IgG
Cross-Reactivity:	Mouse, Rat
Purification:	Antibodies were produced by immunizing rabbits with synthetic peptide and KLH conjugates. Antibodies were purified by affinity-chromatography using epitope-specific peptide.

## Target Details

Target:	CDC25B
Alternative Name:	Cdc25b ( <a href="#">CDC25B Products</a> )

## Target Details

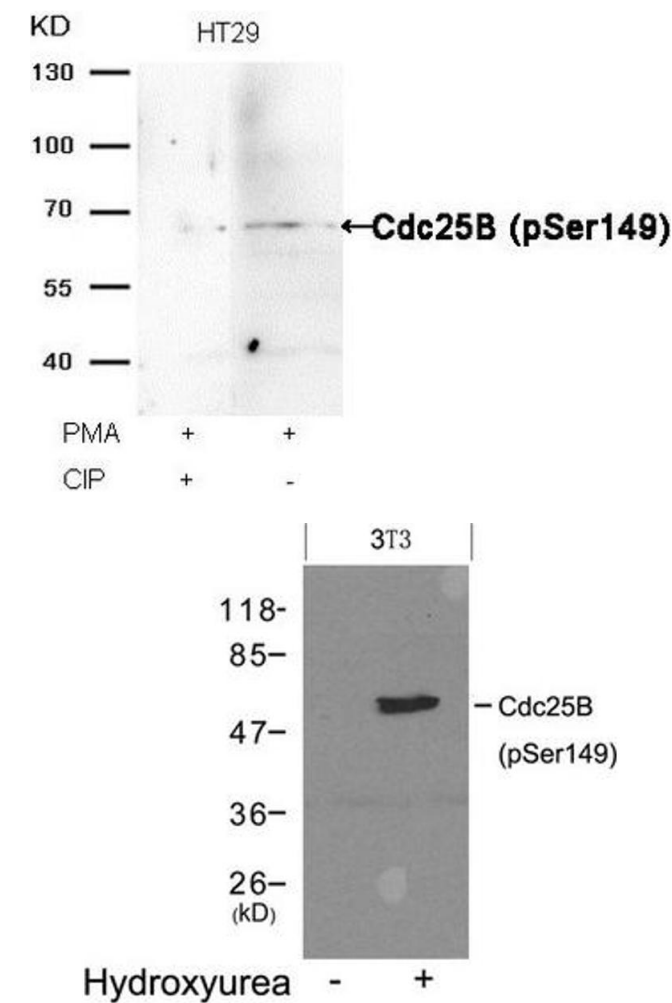
Background:	<p>Background:</p> <p>Cdc25B is a member of the CDC25 family of phosphatases. CDC25B activates the cyclin dependent kinase CDC2 by removing two phosphate groups and it is required for entry into mitosis. CDC25B shuttles between the nucleus and the cytoplasm due to nuclear localization and nuclear export signals. The protein is nuclear in the M and G1 phases of the cell cycle and moves to the cytoplasm during S and G2. CDC25B has oncogenic properties, although its role in tumor formation has not been determined. Multiple transcript variants for this gene exist.</p> <p>Li G, et al. (2010) Retrovirology.7:59.</p> <p>Wang Z,et al. (2010) BMC Cancer.10:233.</p> <p>Lucci MA,et al. (2010) Cell Oncol.32(5-6):361-72.</p> <p>Aliases: CDC25B</p>
UniProt:	<a href="#">Q9DBN8</a>
Pathways:	<a href="#">Cell Division Cycle, M Phase, Autophagy</a>

## Application Details

Application Notes:	WB:1:500-1:1000,
Restrictions:	For Research Use only

## Handling

Format:	Liquid
Buffer:	Supplied at 1.0 mg/mL in phosphate buffered saline (without Mg2+ and Ca2+), pH 7.4, 150 mM NaCl, 0.02 % sodium azide and 50 % glycerol.
Preservative:	Sodium azide
Precaution of Use:	This product contains Sodium azide: a POISONOUS AND HAZARDOUS SUBSTANCE which should be handled by trained staff only.
Storage:	-20 °C,-80 °C
Storage Comment:	Upon receipt, store at -20°C or -80°C. Avoid repeated freeze.



**Western Blotting**

**Image 1.** Western blot analysis of extracts from HT29 cells, treated with PMA or calf intestinal phosphatase (CIP), using Cdc25B (Phospho-Ser149) Antibody.

**Western Blotting**

**Image 2.** Western blot analysis of extracts from 3T3 cells untreated(lane 1) or treated with Hydroxyurea(lane 2) using Cdc25B(Phospho-Ser149) Antibody.