

Datasheet for ABIN7138436
anti-BRCA1 antibody (pSer1524)



[Go to Product page](#)

1 Image

Overview

Quantity:	100 µL
Target:	BRCA1
Binding Specificity:	pSer1524
Reactivity:	Human
Host:	Rabbit
Clonality:	Polyclonal
Conjugate:	This BRCA1 antibody is un-conjugated
Application:	Immunohistochemistry (IHC), ELISA

Product Details

Immunogen:	Peptide sequence around phosphorylation site of serine 1524 (Y-P-S(p)-Q-E) derived from Human BRCA1.
Isotype:	IgG
Cross-Reactivity:	Human
Purification:	Antibodies were produced by immunizing rabbits with synthetic phosphopeptide and KLH conjugates. Antibodies were purified by affinity-chromatography using epitope-specific phosphopeptide. Non-phospho specific antibodies were removed by chromatography using

Target Details

Target:	BRCA1
Alternative Name:	BRCA1 (BRCA1 Products)

Target Details

Background:	<p>Background: The BRCA1-BARD1 heterodimer coordinates a diverse range of cellular pathways such as DNA damage repair, ubiquitination and transcriptional regulation to maintain genomic stability. Acts by mediating ubiquitin E3 ligase activity that is required for its tumor suppressor function. Plays a central role in DNA repair by facilitating cellular response to DNA repair. Required for appropriate cell cycle arrests after ionizing irradiation in both the S-phase and the G2 phase of the cell cycle. Involved in transcriptional regulation of P21 in response to DNA damage. Required for FANCD2 targeting to sites of DNA damage. May function as a transcriptional regulator. Inhibits lipid synthesis by binding to inactive phosphorylated ACACA and preventing its dephosphorylation</p> <p>Lin SY, et al. (2004) Proc Natl Acad Sci U S A, 101(17): 6484-6489</p> <p>Zhang J, et al. (2004) Mol Cell Biol, 24(2): 708-718</p> <p>Beger C, et al. (2001) Proc Natl Acad Sci U S A, 98(1): 130-135</p> <p>Gardner K, et al. (2001) Breast Cancer Res, 3(1): 11-13</p> <p>Zheng L, et al. (2001) Proc Natl Acad Sci U S A, 98(17): 9587-9592</p> <p>Aliases: BRCA 1 antibody, BRCA1 antibody, BRCA1 DNA repair associated antibody, BRCA1/BRCA2 containing complex subunit 1 antibody, BRCA1/BRCA2-containing complex, subunit 1 antibody, BRCA1_HUMAN antibody, BRCAI antibody, BRCC 1 antibody, BRCC1 antibody, Breast and ovarian cancer susceptibility protein 1 antibody, Breast Cancer 1 antibody, Breast Cancer 1 Early Onset antibody, Breast cancer type 1 susceptibility protein antibody, BROVCA1 antibody, FANCS antibody, IRIS antibody, PNCA4 antibody, PPP1R53 antibody, Protein phosphatase 1 regulatory subunit 53 antibody, PSCP antibody, RING finger protein 53 antibody, RNF53 antibody</p>
-------------	---

UniProt:	P38398
Pathways:	Cell Division Cycle , DNA Damage Repair , Intracellular Steroid Hormone Receptor Signaling Pathway , Positive Regulation of Response to DNA Damage Stimulus

Application Details

Application Notes:	IHC:1:50-1:100,
Restrictions:	For Research Use only

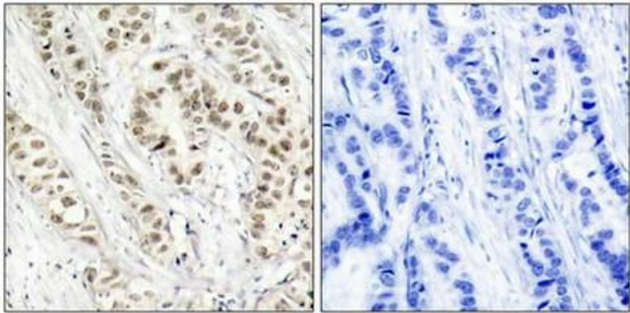
Handling

Format:	Liquid
---------	--------

Handling

Buffer:	Supplied at 1.0 mg/mL in phosphate buffered saline (without Mg ²⁺ and Ca ²⁺), pH 7.4, 150 mM NaCl, 0.02 % sodium azide and 50 % glycerol.
Preservative:	Sodium azide
Precaution of Use:	This product contains Sodium azide: a POISONOUS AND HAZARDOUS SUBSTANCE which should be handled by trained staff only.
Storage:	-20 °C,-80 °C
Storage Comment:	Upon receipt, store at -20°C or -80°C. Avoid repeated freeze.

Images



Immunohistochemistry

Image 1. Immunohistochemical analysis of paraffin-embedded human breast carcinoma tissue using BRCA1(Phospho-Ser1524) Antibody(left) or the same antibody preincubated with blocking peptide(right).