



Datasheet for ABIN7138438
anti-BAD antibody (pSer155)



[Go to Product page](#)

2 Images

Overview

Quantity:	100 µL
Target:	BAD
Binding Specificity:	pSer155
Reactivity:	Mouse
Host:	Rabbit
Clonality:	Polyclonal
Conjugate:	This BAD antibody is un-conjugated
Application:	ELISA, Western Blotting (WB), Immunohistochemistry (IHC)

Product Details

Immunogen:	Peptide sequence around phosphorylation site of serine 155(R-M-S(p)-D-E) derived from Human BAD.
Isotype:	IgG
Cross-Reactivity:	Human, Mouse, Rat
Purification:	Antibodies were produced by immunizing rabbits with synthetic phosphopeptide and KLH conjugates. Antibodies were purified by affinity-chromatography using epitope-specific phosphopeptide. Non-phospho specific antibodies were removed by chromatography using

Target Details

Target:	BAD
Alternative Name:	Bad (BAD Products)

Target Details

Background:

Background:

Promotes cell death. Successfully competes for the binding to Bcl-X(L), Bcl-2 and Bcl-W, thereby affecting the level of heterodimerization of these proteins with BAX. Can reverse the death repressor activity of Bcl-X(L), but not that of Bcl-2. Appears to act as a link between growth factor receptor signaling and the apoptotic pathways.

Schurmann A., Mooney A.F., Sanders L.C., Sells M.A., Wang H.G., Reed J.C., Bokoch G.M. Mol. Cell. Biol. 20:453-461(2000)

Jakobi R., Moertl E., Koeppl M.A.J. Biol. Chem. 276:16624-16634(2001)

Aliases: Bad antibody; Bbc6Bcl2-associated agonist of cell death antibody; BAD antibody; Bcl-2-binding component 6 antibody; Bcl-xL/Bcl-2-associated death promoter antibody; Bcl2 antagonist of cell death antibody

UniProt:

[Q61337](#)

Pathways:

[MAPK Signaling](#), [PI3K-Akt Signaling](#), [RTK Signaling](#), [Apoptosis](#), [Fc-epsilon Receptor Signaling Pathway](#), [Positive Regulation of Peptide Hormone Secretion](#), [Carbohydrate Homeostasis](#), [Positive Regulation of Endopeptidase Activity](#), [Regulation of Carbohydrate Metabolic Process](#), [Hepatitis C](#), [CXCR4-mediated Signaling Events](#)

Application Details

Application Notes:

WB:1:500-1:1000, IHC:1:50-1:100,

Restrictions:

For Research Use only

Handling

Format:

Liquid

Buffer:

Supplied at 1.0 mg/mL in phosphate buffered saline (without Mg²⁺ and Ca²⁺), pH 7.4, 150 mM NaCl, 0.02 % sodium azide and 50 % glycerol.

Preservative:

Sodium azide

Precaution of Use:

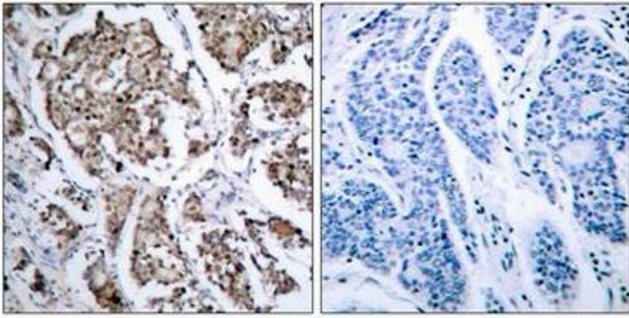
This product contains Sodium azide: a POISONOUS AND HAZARDOUS SUBSTANCE which should be handled by trained staff only.

Storage:

-20 °C,-80 °C

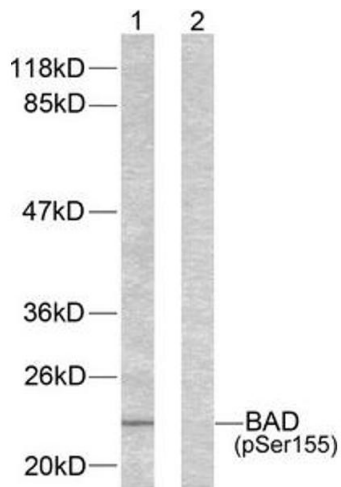
Storage Comment:

Upon receipt, store at -20°C or -80°C. Avoid repeated freeze.



Immunohistochemistry

Image 1. Immunohistochemical analysis of paraffin-embedded human breast carcinoma tissue using BAD (phospho-Ser155) antibody.



Western Blotting

Image 2. Western blot analysis of extracts from 293 cells using BAD (phospho-Ser155) antibody.