

Datasheet for ABIN7138441
anti-MARCKS antibody (pSer158)[Go to Product page](#)

2 Images

Overview

Quantity:	100 µL
Target:	MARCKS
Binding Specificity:	pSer158
Reactivity:	Human
Host:	Rabbit
Clonality:	Polyclonal
Conjugate:	This MARCKS antibody is un-conjugated
Application:	Western Blotting (WB), ELISA, Immunofluorescence (IF)

Product Details

Immunogen:	Peptide sequence around phosphorylation site of serine 158 (R-F-S(p)-F-K) derived from Human MARCKS.
Isotype:	IgG
Cross-Reactivity:	Human, Mouse, Rat
Purification:	Antibodies were produced by immunizing rabbits with synthetic phosphopeptide and KLH conjugates. Antibodies were purified by affinity-chromatography using epitope-specific phosphopeptide. Non-phospho specific antibodies were removed by chromatography using

Target Details

Target:	MARCKS
Alternative Name:	MARCKS (MARCKS Products)

Target Details

Background:	<p>Background: MARCKS is the most prominent cellular substrate for protein kinase C. This protein binds calmodulin, actin, and synapsin. MARCKS is a filamentous (F) actin cross-linking protein.</p> <p>Pariser H, et al. Proc Natl Acad Sci U S A 2005 Aug 30, 102(35): 12407-12412</p> <p>Nagumo H, et al. Biochem Biophys Res Commun 2001 Jan 26, 280(3): 605-609</p> <p>Yamamoto H, et al. Arch Biochem Biophys 1998 Nov 15, 359(2): 151-159</p> <p>Aliases: 80 kDa protein antibody, 80K L antibody, 80K L protein antibody, 80K-L protein antibody, 80KL antibody, 81 kDa protein, light chain antibody, light chain antibody, MACS antibody, MARCKS antibody, MARCS antibody, MARCS_HUMAN antibody, MGC52672 antibody, myristoylated alanine rich C kinase substrate antibody, Myristoylated alanine rich protein kinase C substrate (MARCKS, 80K L) antibody, Myristoylated alanine rich protein kinase C substrate antibody, Myristoylated alanine-rich C-kinase substrate antibody, Phosphomyristin antibody, PKCSL antibody, PRKCSL antibody, protein kinase C substrate 80 kDa protein light chain antibody, Protein kinase C substrate antibody</p>
-------------	---

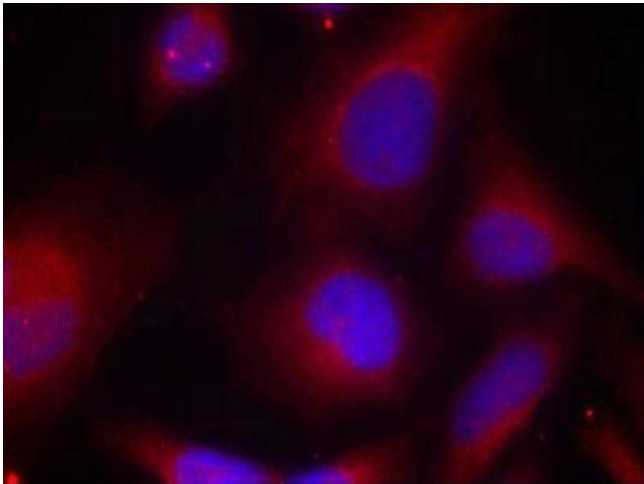
UniProt: [P29966](#)

Application Details

Application Notes:	WB:1:500-1:1000, IF:1:100-1:200,
Restrictions:	For Research Use only

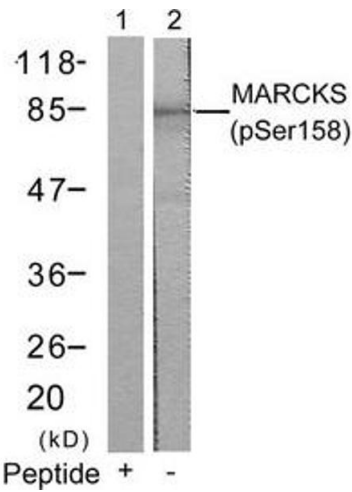
Handling

Format:	Liquid
Buffer:	Supplied at 1.0 mg/mL in phosphate buffered saline (without Mg ²⁺ and Ca ²⁺), pH 7.4, 150 mM NaCl, 0.02 % sodium azide and 50 % glycerol.
Preservative:	Sodium azide
Precaution of Use:	This product contains Sodium azide: a POISONOUS AND HAZARDOUS SUBSTANCE which should be handled by trained staff only.
Storage:	-20 °C,-80 °C
Storage Comment:	Upon receipt, store at -20°C or -80°C. Avoid repeated freeze.



Immunofluorescence

Image 1. Immunofluorescence staining of methanol-fixed HeLa cells using MARCKS(Phospho-Ser158) Antibody.



Western Blotting

Image 2. Western blot analysis of extracts from 3T3 cells using MARCKS(Phospho-Ser158) Antibody(Lane 2) and the same antibody preincubated with blocking peptide(Lane1).