

Datasheet for ABIN7138443
anti-Stathmin 1 antibody (pSer16)

3 Images

[Go to Product page](#)

Overview

Quantity:	100 µL
Target:	Stathmin 1 (STMN1)
Binding Specificity:	pSer16
Reactivity:	Human
Host:	Rabbit
Clonality:	Polyclonal
Conjugate:	This Stathmin 1 antibody is un-conjugated
Application:	Western Blotting (WB), Immunohistochemistry (IHC), ELISA

Product Details

Immunogen:	Peptide sequence around phosphorylation site of serine 16 (R-A-S(p)-G-Q) derived from Human Stathmin 1.
Isotype:	IgG
Cross-Reactivity:	Human, Mouse, Rat
Purification:	Antibodies were produced by immunizing rabbits with synthetic phosphopeptide and KLH conjugates. Antibodies were purified by affinity-chromatography using epitope-specific phosphopeptide. Non-phospho specific antibodies were removed by chromatography using

Target Details

Target:	Stathmin 1 (STMN1)
Alternative Name:	STMN1 (STMN1 Products)

Target Details

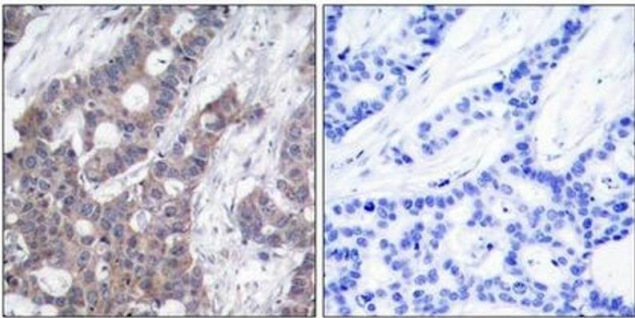
Background:	<p>Background:</p> <p>Involved in the regulation of the microtubule (MT) filament system by destabilizing microtubules. Prevents assembly and promotes disassembly of microtubules. Phosphorylation at Ser-16 may be required for axon formation during neurogenesis. Involved in the control of the learned and innate fear</p> <p>Larsson N, et al. (1999) Mol Cell Biol, 19(3): 2242-2250</p> <p>K</p> <p>Aliases: C1orf215 antibody, Lag antibody, LAP 18 antibody, LAP18 antibody, Leukemia associated phosphoprotein p18 antibody, Leukemia-associated phosphoprotein p18 antibody, Metablastin antibody, Oncoprotein 18 antibody, OP 18 antibody, Op18 antibody, p18 antibody, p19 antibody, Phosphoprotein 19 antibody, Phosphoprotein p19 antibody, pp17 antibody, pp19 antibody, PR22 antibody, Pr22 protein antibody, Prosolin antibody, Protein Pr22 antibody, SMN antibody, Stathmin antibody, Stathmin1 antibody, STMN 1 antibody, Stmn1 antibody, STMN1_HUMAN antibody</p>
UniProt:	P16949
Pathways:	MAPK Signaling , Microtubule Dynamics

Application Details

Application Notes:	WB:1:500-1:1000, IHC:1:50-1:100,
Restrictions:	For Research Use only

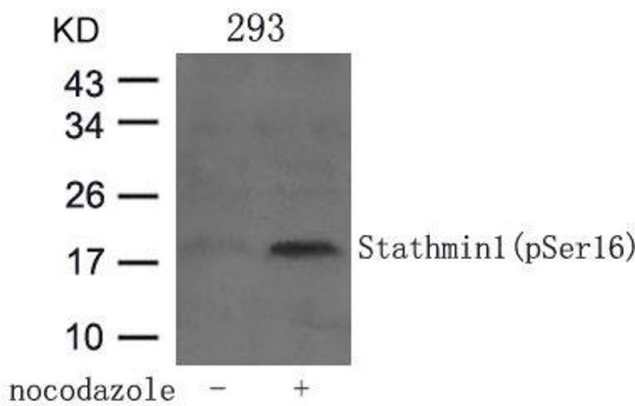
Handling

Format:	Liquid
Buffer:	Supplied at 1.0 mg/mL in phosphate buffered saline (without Mg ²⁺ and Ca ²⁺), pH 7.4, 150 mM NaCl, 0.02 % sodium azide and 50 % glycerol.
Preservative:	Sodium azide
Precaution of Use:	This product contains Sodium azide: a POISONOUS AND HAZARDOUS SUBSTANCE which should be handled by trained staff only.
Storage:	-20 °C,-80 °C
Storage Comment:	Upon receipt, store at -20°C or -80°C. Avoid repeated freeze.



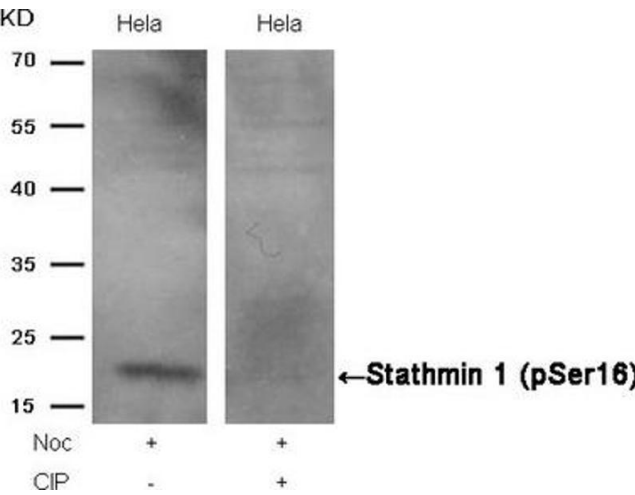
Immunohistochemistry

Image 1. Immunohistochemical analysis of paraffin-embedded human breast carcinoma tissue using Stathmin 1(Phospho-Ser16) Antibody(left) or the same antibody preincubated with blocking peptide(right).



Western Blotting

Image 2. Western blot analysis of extracts from 293 cells untreated or treated with Nocodazol using Stathmin 1(Phospho-Ser16) Antibody.



Western Blotting

Image 3. Western blot analysis of extracts from HeLa cells, treated with Noc or calf intestinal phosphatase (CIP), using Stathmin 1 (Phospho-Ser16) Antibody.