

Datasheet for ABIN7138449  
**anti-MARCKS antibody (pSer170)**[Go to Product page](#)

## 3 Images

## Overview

Quantity:	100 µL
Target:	MARCKS
Binding Specificity:	pSer170
Reactivity:	Human
Host:	Rabbit
Clonality:	Polyclonal
Conjugate:	This MARCKS antibody is un-conjugated
Application:	Western Blotting (WB), ELISA, Immunohistochemistry (IHC)

## Product Details

Immunogen:	Peptide sequence around phosphorylation site of Serine 170 (G-F-S(p)-F-K) derived from Human MARCKS.
Isotype:	IgG
Cross-Reactivity:	Human
Purification:	Antibodies were produced by immunizing rabbits with synthetic phosphopeptide and KLH conjugates. Antibodies were purified by affinity-chromatography using epitope-specific phosphopeptide. Non-phospho specific antibodies were removed by chromatography using

## Target Details

Target:	MARCKS
Alternative Name:	MARCKS ( <a href="#">MARCKS Products</a> )

## Target Details

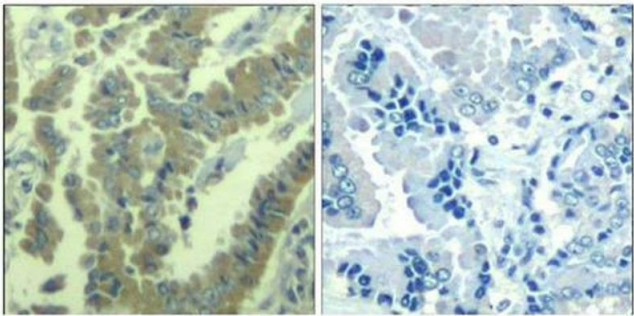
Background:	<p>Background:</p> <p>MARCKS is the most prominent cellular substrate for protein kinase C. This protein binds calmodulin, actin, and synapsin. MARCKS is a filamentous (F) actin cross-linking protein.</p> <p>Ramsden, J.J. (2000) Int. J. Biochem. Cell Biol. 32, 475-479.</p> <p>Graff, J. M. et al. (1989) J. Biol. Chem. 264, 21818-21823.</p> <p>Hartwig, J. H. et al. (1992) Nature 356, 618-622.</p> <p>Thelen, M. et al. (1991) Nature 351, 320-322.</p> <p>Aliases: 80 kDa protein antibody, 80K L antibody, 80K L protein antibody, 80K-L protein antibody, 80KL antibody, 81 kDa protein, light chain antibody, light chain antibody, MACS antibody, MARCKS antibody, MARCS antibody, MARCS_HUMAN antibody, MGC52672 antibody, myristoylated alanine rich C kinase substrate antibody, Myristoylated alanine rich protein kinase C substrate (MARCKS, 80K L) antibody, Myristoylated alanine rich protein kinase C substrate antibody, Myristoylated alanine-rich C-kinase substrate antibody, Phosphomyristin antibody, PKCSL antibody, PRKCSL antibody, protein kinase C substrate 80 kDa protein light chain antibody, Protein kinase C substrate antibody</p>
UniProt:	<a href="#">P29966</a>

## Application Details

Application Notes:	WB:1:500-1:1000, IHC:1:50-1:100,
Restrictions:	For Research Use only

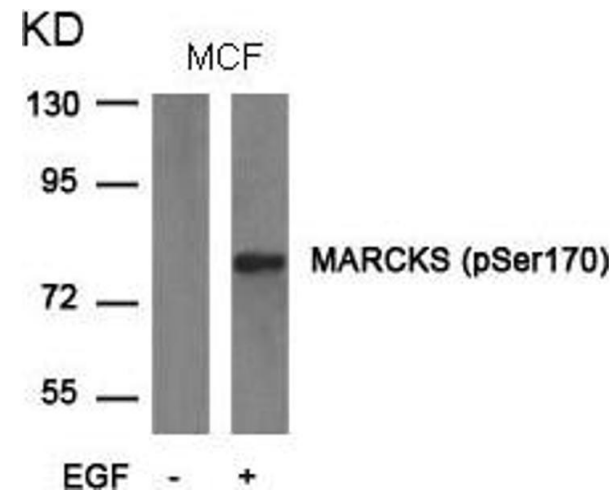
## Handling

Format:	Liquid
Buffer:	Supplied at 1.0 mg/mL in phosphate buffered saline (without Mg <sup>2+</sup> and Ca <sup>2+</sup> ), pH 7.4, 150 mM NaCl, 0.02 % sodium azide and 50 % glycerol.
Preservative:	Sodium azide
Precaution of Use:	This product contains Sodium azide: a POISONOUS AND HAZARDOUS SUBSTANCE which should be handled by trained staff only.
Storage:	-20 °C,-80 °C
Storage Comment:	Upon receipt, store at -20°C or -80°C. Avoid repeated freeze.



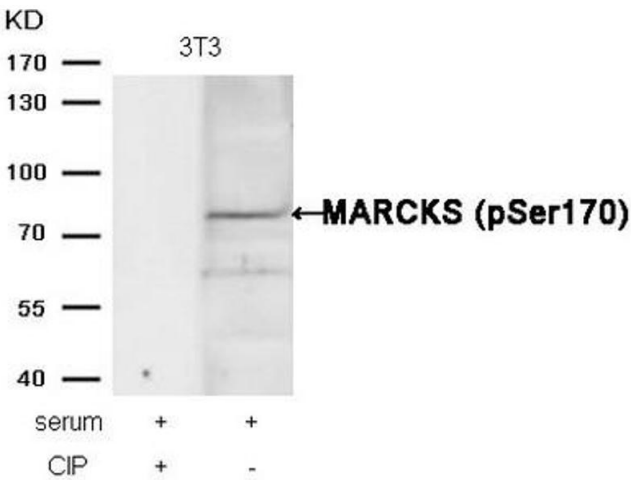
Immunohistochemistry

**Image 1.** Immunohistochemical analysis of paraffin-embedded human lung carcinoma tissue using MARCKS(Phospho-Ser170) Antibody(left) or the same antibody preincubated with blocking peptide(right).



Western Blotting

**Image 2.** Western blot analysis of extracts from MCF cells untreated or treated with EGF using MARCKS(phospho-Ser170) Antibody.



Western Blotting

**Image 3.** Western blot analysis of extracts from 3T3 cells, treated with serum or calf intestinal phosphatase (CIP), using MARCKS (phospho-Ser170) Antibody.