

Datasheet for ABIN7138457
anti-IGFBP3 antibody (pSer183)



[Go to Product page](#)

1 Image

Overview

Quantity:	100 µL
Target:	IGFBP3
Binding Specificity:	pSer183
Reactivity:	Human
Host:	Rabbit
Clonality:	Polyclonal
Conjugate:	This IGFBP3 antibody is un-conjugated
Application:	Western Blotting (WB), ELISA

Product Details

Immunogen:	Peptide sequence around phosphorylation site of serine 183(K-D-S(p)-Q-R) derived from Human IGFBP-3 .
Isotype:	IgG
Cross-Reactivity:	Human, Mouse
Purification:	Antibodies were produced by immunizing rabbits with synthetic phosphopeptide and KLH conjugates. Antibodies were purified by affinity-chromatography using epitope-specific phosphopeptide. Non-phospho specific antibodies were removed by chromatography using

Target Details

Target:	IGFBP3
Alternative Name:	IGFBP3 (IGFBP3 Products)

Target Details

Background:	<p>Background:</p> <p>IGF-binding proteins prolong the half-life of the IGFs and have been shown to either inhibit or stimulate the growth promoting effects of the IGFs on cell culture. They alter the interaction of IGFs with their cell surface receptors.</p> <p>Zhang Q, Steinle JJ (2013) Invest Ophthalmol Vis Sci 54, 3052-7 . Cobb LJ, Liu B, Lee KW, Cohen P (2006) Cancer Res 66, 10878-84 .</p> <p>Aliases: Acid stable subunit of the 140 K IGF complex antibody, Binding protein 29 antibody, Binding protein 53 antibody, BP 53 antibody, BP53 antibody, Growth hormone dependent binding protein antibody, IBP 3 antibody, IBP-3 antibody, IBP3 antibody, IBP3_HUMAN antibody, IGF binding protein 3 antibody, IGF-binding protein 3 antibody, IGFBP 3 antibody, IGFBP-3 antibody, IGFBP3 antibody, Insulin Like Growth Factor Binding Protein 3 antibody, Insulin-like growth factor binding protein 3 precursor antibody, Insulin-like growth factor-binding protein 3 antibody</p>
-------------	---

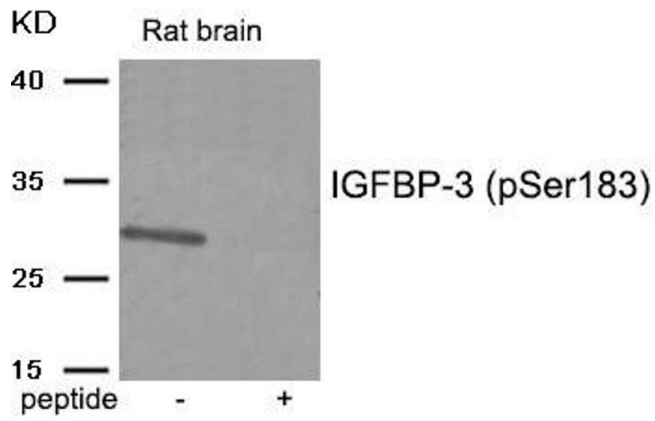
UniProt:	P17936
Pathways:	Myometrial Relaxation and Contraction , Regulation of Muscle Cell Differentiation , Skeletal Muscle Fiber Development , Regulation of Carbohydrate Metabolic Process , Autophagy , Smooth Muscle Cell Migration , Growth Factor Binding

Application Details

Application Notes:	WB:1:500-1:1000,
Restrictions:	For Research Use only

Handling

Format:	Liquid
Buffer:	Rabbit IgG in phosphate buffered saline (without Mg ²⁺ and Ca ²⁺), pH 7.4, 150 mM NaCl, 0.02 % sodium azide and 50 % glycerol.
Preservative:	Sodium azide
Precaution of Use:	This product contains Sodium azide: a POISONOUS AND HAZARDOUS SUBSTANCE which should be handled by trained staff only.
Storage:	-20 °C,-80 °C
Storage Comment:	Upon receipt, store at -20°C or -80°C. Avoid repeated freeze.



Western Blotting

Image 1. Western blot analysis of extracts from Rat brain tissue using IGFBP-3 (Phospho-Ser183) antibody. The lane on the right is treated with the antigen-specific peptide.