

Datasheet for ABIN7138459
anti-MAP2K3 antibody (pSer189)[Go to Product page](#)

4 Images

Overview

Quantity:	100 µL
Target:	MAP2K3
Binding Specificity:	pSer189
Reactivity:	Human
Host:	Rabbit
Clonality:	Polyclonal
Conjugate:	This MAP2K3 antibody is un-conjugated
Application:	Western Blotting (WB), Immunohistochemistry (IHC), ELISA, Immunofluorescence (IF)

Product Details

Immunogen:	Peptide sequence around phosphorylation site of serine 189 (V-D-S(p)-V-A) derived from Human MKK3.
Isotype:	IgG
Cross-Reactivity:	Human, Mouse, Rat
Purification:	Antibodies were produced by immunizing rabbits with synthetic phosphopeptide and KLH conjugates. Antibodies were purified by affinity-chromatography using epitope-specific phosphopeptide. Non-phospho specific antibodies were removed by chromatography using

Target Details

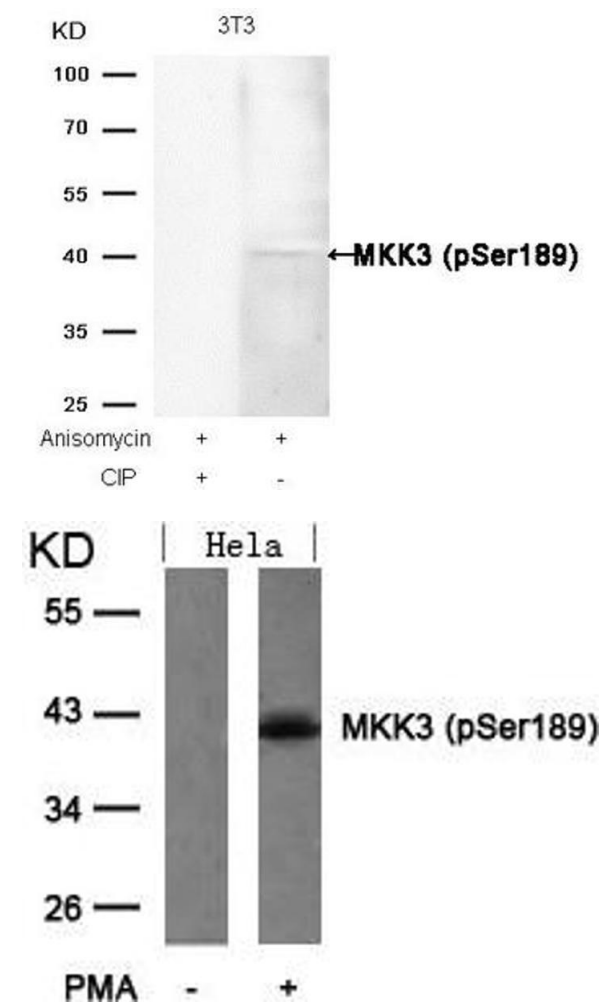
Target:	MAP2K3
Alternative Name:	MAP2K3 (MAP2K3 Products)

Target Details

Background:	<p>Background:</p> <p>Dual specificity kinase. Is activated by cytokines and environmental stress in vivo. Catalyzes the concomitant phosphorylation of a threonine and a tyrosine residue in the MAP kinase p38.</p> <p>Wang W, et al. (2002) Mol Cell Biol , 22(10): 3389-403.</p> <p>Raingeaud J, et al. (1996) Mol Cell Biol, 16(3): 1247-55.</p> <p>Aliases: AW212142 antibody, dual specificity mitogen activated protein kinase kinase 3 antibody, Dual specificity mitogen-activated protein kinase kinase 3 antibody, MAP kinase kinase 3 antibody, map2k3 antibody, MAPK ERK kinase 3 antibody, MAPK/ERK kinase 3 antibody, MAPKK 3 antibody, MAPKK3 antibody, MEK 3 antibody, MEK3 antibody, Mitogen activated protein kinase kinase 3 antibody, MKK 3 antibody, MKK3 antibody, mMKK3b antibody, MP2K3_HUMAN antibody, PRKMK 3 antibody, PRKMK3 antibody, protein kinase, mitogen-activated, kinase 3 antibody, SAPK kinase 2 antibody, SAPKK 2 antibody, SAPKK2 antibody, Stress activated protein kinase kinase 2 antibody</p>
UniProt:	P46734
Pathways:	MAPK Signaling , TLR Signaling , Activation of Innate immune Response , Toll-Like Receptors Cascades , Autophagy , Signaling Events mediated by VEGFR1 and VEGFR2

Application Details

Application Notes:	WB:1:500-1:1000, IHC:1:50-1:100, IF:1:100-1:200,
Restrictions:	For Research Use only
Handling	
Format:	Liquid
Buffer:	Supplied at 1.0 mg/mL in phosphate buffered saline (without Mg ²⁺ and Ca ²⁺), pH 7.4, 150 mM NaCl, 0.02 % sodium azide and 50 % glycerol.
Preservative:	Sodium azide
Precaution of Use:	This product contains Sodium azide: a POISONOUS AND HAZARDOUS SUBSTANCE which should be handled by trained staff only.
Storage:	-20 °C,-80 °C
Storage Comment:	Upon receipt, store at -20°C or -80°C. Avoid repeated freeze.

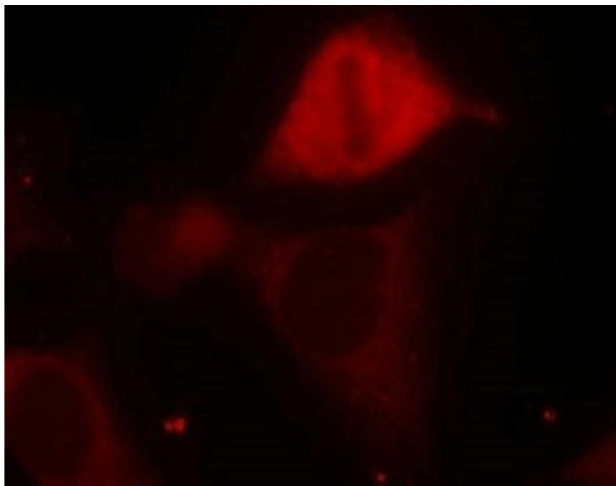


Western Blotting

Image 1. Western blot analysis of extracts from 3T3 cells, treated with Anisomycin or calf intestinal phosphatase (CIP), using MKK3 (Phospho-Ser189) Antibody.

Western Blotting

Image 2. Western blot analysis of extracts from HeLa cells untreated or treated with PMA using MKK3(Phospho-Ser189) Antibody.



Immunofluorescence

Image 3. Immunofluorescence staining of methanol-fixed HeLa cells using MKK3(Phospho-Ser189) Antibody.

Please check the [product details page](#) for more images. Overall 4 images are available for ABIN7138459.