

Datasheet for ABIN7138460  
**anti-MYL9 antibody (pSer19)**[Go to Product page](#)

## 2 Images

## Overview

Quantity:	100 µL
Target:	MYL9
Binding Specificity:	pSer19
Reactivity:	Human
Host:	Rabbit
Clonality:	Polyclonal
Application:	Western Blotting (WB), Immunohistochemistry (IHC), ELISA

## Product Details

Immunogen:	Peptide sequence around phosphorylation site of serine 19 (A-T-S(p)-N-V) derived from Human Myosin Light Chain 2.
Isotype:	IgG
Cross-Reactivity:	Human, Mouse, Rat
Purification:	Antibodies were produced by immunizing rabbits with synthetic phosphopeptide and KLH conjugates. Antibodies were purified by affinity-chromatography using epitope-specific phosphopeptide. Non-phospho specific antibodies were removed by chromatography using

## Target Details

Target:	MYL9
Alternative Name:	MYL9 ( <a href="#">MYL9 Products</a> )
Background:	Background:

## Target Details

Myosin regulatory subunit that plays an important role in regulation of both smooth muscle and nonmuscle cell contractile activity via its phosphorylation. Implicated in cytokinesis, receptor capping, and cell locomotion

Janiak A, et al. (2006) Mol Biol Cell. Apr, 17(4): 1606-1619.

Croft DR, et al. (2006) Mol Cell Biol. 2 Jun, 26(12): 4612-4627

Li Z, et al. (2006) Mol Cell Biol. Jun, 26(11): 4240-4256

Aliases: 20 kDa myosin light chain antibody, Human 20 kDa myosin light chain (MLC2) mRNA complete cds antibody, LC20 antibody, MGC3505 antibody, MLC 2 antibody, MLC-2C antibody, MLC2 antibody, MLY 9 antibody, MRLC1 antibody, MYL9 antibody, MYL9\_HUMAN antibody, Myosin light chain 9 regulatory antibody, Myosin light polypeptide 9 regulatory antibody, myosin regulatory light chain 1 antibody, Myosin regulatory light chain 2 antibody, Myosin regulatory light chain 2 smooth muscle isoform antibody, Myosin regulatory light chain 9 antibody, Myosin regulatory light chain MRLC1 antibody, Myosin regulatory light polypeptide 9 antibody, Myosin RLC antibody, Myosin vascular smooth muscle light chain 2 antibody, MYRL2 antibody, OTTHUMP00000030857 antibody, smooth muscle isoform antibody

UniProt: [P24844](#)

## Application Details

Application Notes: WB:1:500-1:1000, IHC:1:50-1:100,

Restrictions: For Research Use only

## Handling

Format: Liquid

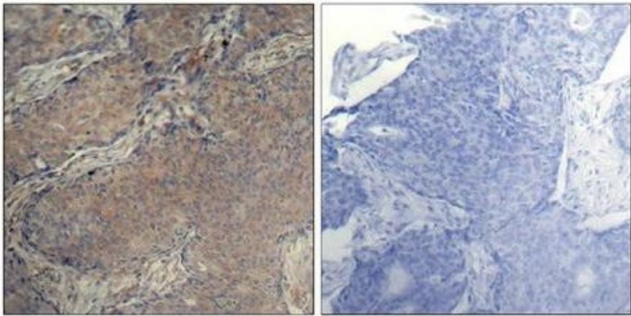
Buffer: Supplied at 1.0 mg/mL in phosphate buffered saline (without Mg<sup>2+</sup> and Ca<sup>2+</sup>), pH 7.4, 150 mM NaCl, 0.02 % sodium azide and 50 % glycerol.

Preservative: Sodium azide

Precaution of Use: This product contains Sodium azide: a POISONOUS AND HAZARDOUS SUBSTANCE which should be handled by trained staff only.

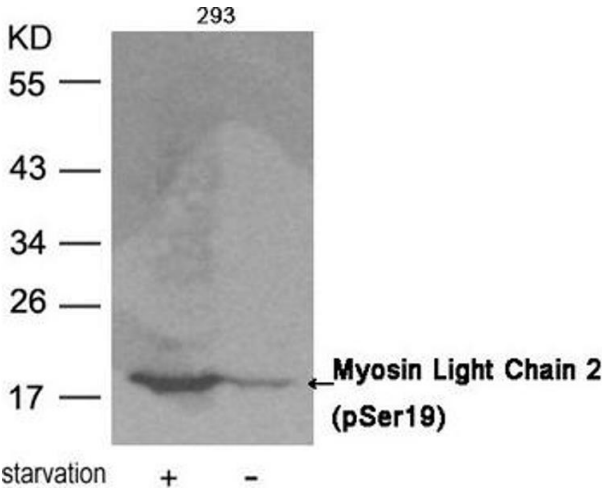
Storage: -20 °C,-80 °C

Storage Comment: Upon receipt, store at -20°C or -80°C. Avoid repeated freeze.



Immunohistochemistry

**Image 1.** Immunohistochemical analysis of paraffin-embedded human breast carcinoma tissue using Myosin Light Chain 2 (Phospho-Ser19) Antibody (left) or the same antibody preincubated with blocking peptide (right).



Western Blotting

**Image 2.** Western blot analysis of extracts from 293 cells untreated or treated with starvation using Myosin Light Chain 2 (Phospho-Ser19) Antibody.