

Datasheet for ABIN7138464
anti-PAK2 antibody (pSer197)[Go to Product page](#)

1 Image

Overview

Quantity:	100 µL
Target:	PAK2
Binding Specificity:	pSer197
Reactivity:	Human
Host:	Rabbit
Clonality:	Polyclonal
Conjugate:	This PAK2 antibody is un-conjugated
Application:	ELISA, Immunohistochemistry (IHC)

Product Details

Immunogen:	Peptide sequence around phosphorylation site of Serine 197(T-R-S(p)-V-I) derived from Human PAK2.
Isotype:	IgG
Cross-Reactivity:	Human, Mouse, Rat
Purification:	Antibodies were produced by immunizing rabbits with synthetic phosphopeptide and KLH conjugates. Antibodies were purified by affinity-chromatography using epitope-specific phosphopeptide. Non-phospho specific antibodies were removed by chromatography using

Target Details

Target:	PAK2
Alternative Name:	PAK2 (PAK2 Products)

Target Details

Background:	<p>Background:</p> <p>The activated kinase acts on a variety of targets. Likely to be the GTPase effector that links the Rho-related GTPases to the JNK MAP kinase pathway. Activated by CDC42 and RAC1. Involved in dissolution of stress fibers and reorganization of focal complexes. Involved in regulation of microtubule biogenesis through phosphorylation of TBCB. Activity is inhibited in cells undergoing apoptosis, potentially due to binding of CDC2L1 and CDC2L2.</p> <p>Martin G.A., EMBO J. 14:1970-1978(1995).</p> <p>The MGC Project Team, Genome Res. 14:2121-2127(2004).</p> <p>Olsen J.V., Cell 127:635-648(2006).</p> <p>Aliases: C-t-PAK2 antibody, CB422 antibody, EC 2.7.11.1 antibody, Gamma PAK antibody, Gamma-PAK antibody, hPAK65 antibody, Kinase antibody, p21 (CDKN1A) activated kinase 2 antibody, p21 (CDKN1A)-activated kinase 2a antibody, p21 activated kinase 2 antibody, p21 protein (Cdc42/Rac)-activated kinase 2 antibody, p21 protein Cdc42 Rac activated kinase 2 antibody, p21-activated kinase 2 antibody, p21-activated kinase, 65-KD antibody, p21-activated protein kinase I antibody, p21CDKN1A activated kinase 2 antibody, p27 antibody, p34 antibody, p58 antibody, p65PAK antibody, PAK 2 antibody, PAK-2 antibody, PAK-2p34 antibody, Pak2 antibody, PAK2_HUMAN antibody, PAK65 antibody, PAKgamma antibody, S6 H4 kinase antibody, S6/H4 kinase antibody, Serine threonine protein kinase PAK 2 antibody, Serine/threonine protein kinase PAK 2 antibody</p>
-------------	--

UniProt:	Q13177
----------	------------------------

Pathways:	MAPK Signaling , RTK Signaling , TCR Signaling , Fc-epsilon Receptor Signaling Pathway , Regulation of Lipid Metabolism by PPARalpha
-----------	--

Application Details

Application Notes:	IHC:1:50-1:100,
Restrictions:	For Research Use only

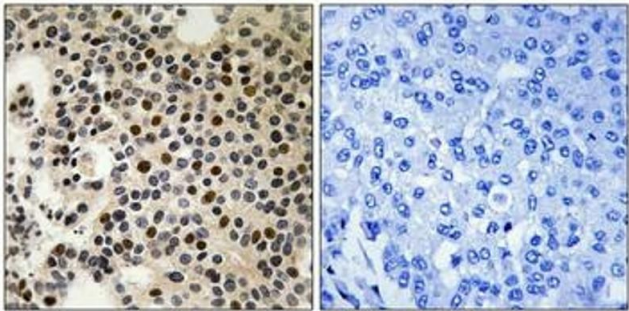
Handling

Format:	Liquid
Buffer:	Rabbit IgG in phosphate buffered saline (without Mg ²⁺ and Ca ²⁺), pH 7.4, 150 mM NaCl, 0.02 % sodium azide and 50 % glycerol.
Preservative:	Sodium azide

Handling

Precaution of Use:	This product contains Sodium azide: a POISONOUS AND HAZARDOUS SUBSTANCE which should be handled by trained staff only.
Storage:	-20 °C,-80 °C
Storage Comment:	Upon receipt, store at -20°C or -80°C. Avoid repeated freeze.

Images



Immunohistochemistry

Image 1. Immunohistochemical analysis of paraffin-embedded human breast carcinoma tissue, using PAK2 (Phospho-Ser197) antibody (left) or the same antibody preincubated with blocking peptide (right).