

Datasheet for ABIN7138465
anti-CDC25C antibody (pSer198)



[Go to Product page](#)

1 Image

Overview

Quantity:	100 µL
Target:	CDC25C
Binding Specificity:	pSer198
Reactivity:	Human
Host:	Rabbit
Clonality:	Polyclonal
Conjugate:	This CDC25C antibody is un-conjugated
Application:	ELISA, Immunohistochemistry (IHC)

Product Details

Immunogen:	Peptide sequence around phosphorylation site of Serine 198(E-F-S(p)-L-K) derived from Human CDC25C.
Isotype:	IgG
Cross-Reactivity:	Human
Purification:	Antibodies were produced by immunizing rabbits with synthetic phosphopeptide and KLH conjugates. Antibodies were purified by affinity-chromatography using epitope-specific phosphopeptide. Non-phospho specific antibodies were removed by chromatography using

Target Details

Target:	CDC25C
Alternative Name:	CDC25C (CDC25C Products)

Target Details

Background:	<p>Background:</p> <p>cdc25C is highly conserved during evolution and it plays a key role in the regulation of cell division. The encoded protein is a tyrosine phosphatase and belongs to the Cdc25 phosphatase family. It directs dephosphorylation of cyclin B-bound CDC2 and triggers entry into mitosis. It is also thought to suppress p53-induced growth arrest. Multiple alternatively spliced transcript variants of this gene have been described, however, the full-length nature of many of them is not known.</p> <p>Sadhu K., Proc. Natl. Acad. Sci. U.S.A. 87:5139-5143(1990).</p> <p>Bureik M., Int. J. Oncol. 17:1251-1258(2000).</p> <p>Wegener S., Eur. J. Cell Biol. 79:810-815(2000).</p> <p>Aliases: CDC 25 antibody, Cdc 25C antibody, CDC25 antibody, CDC25C antibody, Cell division cycle 25 homolog C antibody, Cell division cycle 25C antibody, Cell division cycle 25C protein antibody, Dual specificity phosphatase Cdc25C antibody, M phase inducer phosphatase 3 antibody, M-phase inducer phosphatase 3 antibody, Mitosis inducer CDC25 antibody, MPIP3 antibody, MPIP3_HUMAN antibody, Phosphotyrosine phosphatase antibody, PPP1R60 antibody, protein phosphatase 1, regulatory subunit 60 antibody</p>
UniProt:	P30307
Pathways:	Cell Division Cycle, M Phase

Application Details

Application Notes:	IHC:1:50-1:100,
Restrictions:	For Research Use only

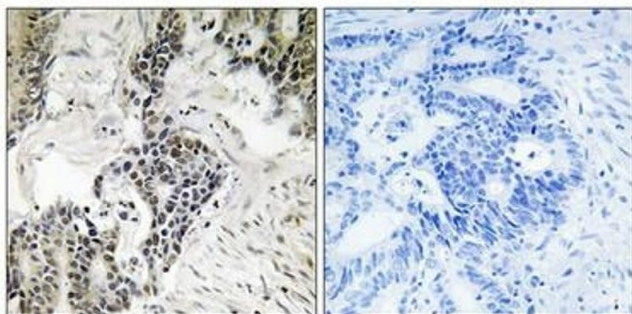
Handling

Format:	Liquid
Buffer:	Rabbit IgG in phosphate buffered saline (without Mg ²⁺ and Ca ²⁺), pH 7.4, 150 mM NaCl, 0.02 % sodium azide and 50 % glycerol.
Preservative:	Sodium azide
Precaution of Use:	This product contains Sodium azide: a POISONOUS AND HAZARDOUS SUBSTANCE which should be handled by trained staff only.
Storage:	-20 °C, -80 °C

Handling

Storage Comment: Upon receipt, store at -20°C or -80°C. Avoid repeated freeze.

Images



Immunohistochemistry

Image 1. Immunohistochemical analysis of paraffin-embedded human colon carcinoma tissue using CDC25C (Phospho-Ser198) antibody (left) or the same antibody preincubated with blocking peptide (right).