

Datasheet for ABIN7138474
anti-MAP2K6 antibody (pSer207)[Go to Product page](#)

3 Images

Overview

Quantity:	100 µL
Target:	MAP2K6
Binding Specificity:	pSer207
Reactivity:	Human
Host:	Rabbit
Clonality:	Polyclonal
Conjugate:	This MAP2K6 antibody is un-conjugated
Application:	Western Blotting (WB), ELISA, Immunohistochemistry (IHC), Immunofluorescence (IF)

Product Details

Immunogen:	Peptide sequence around phosphorylation site of serine 207 (V-D-S(p)-V-A) derived from Human MKK6.
Isotype:	IgG
Cross-Reactivity:	Human, Mouse, Rat
Purification:	Antibodies were produced by immunizing rabbits with synthetic phosphopeptide and KLH conjugates. Antibodies were purified by affinity-chromatography using epitope-specific phosphopeptide. Non-phospho specific antibodies were removed by chromatography using

Target Details

Target:	MAP2K6
Alternative Name:	MAP2K6 (MAP2K6 Products)

Target Details

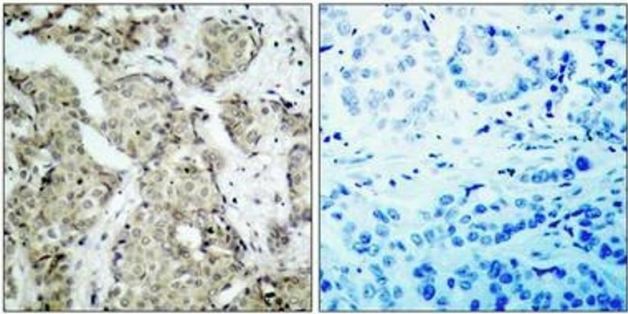
Background:	<p>Background:</p> <p>Catalyzes the concomitant phosphorylation of a threonine and a tyrosine residue in MAP kinase p38 exclusively.</p> <p>Wang W, et al. (2002) Mol Cell Biol , 22(10): 3389-403.</p> <p>Raingeaud J, et al. (1996) Mol Cell Biol, 16(3): 1247-55.</p> <p>Aliases: Dual specificity mitogen activated protein kinase kinase 6 antibody, Dual specificity mitogen-activated protein kinase kinase 6 antibody, MAP kinase kinase 6 antibody, MAP2K6 antibody, MAPK/ERK kinase 6 antibody, MAPKK 6 antibody, MAPKK6 antibody, MEK 6 antibody, MEK6 antibody, Mitogen Activated Protein Kinase Kinase 6 antibody, MKK 6 antibody, MKK6 antibody, MP2K6_HUMAN antibody, PRKMK6 antibody, protein kinase antibody, Protein kinase mitogen activated kinase 6 antibody, protein kinase, mitogen-activated, kinase 6 (MAP kinase kinase 6) antibody, SAPK kinase 3 antibody, SAPKK-3 antibody, SAPKK3 antibody, SKK3 antibody, Stress-activated protein kinase kinase 3 antibody</p>
UniProt:	P52564
Pathways:	MAPK Signaling , TLR Signaling , Activation of Innate immune Response , Regulation of Muscle Cell Differentiation , Toll-Like Receptors Cascades

Application Details

Application Notes:	WB:1:500-1:1000, IHC:1:50-1:100, IF:1:100-1:200,
Restrictions:	For Research Use only

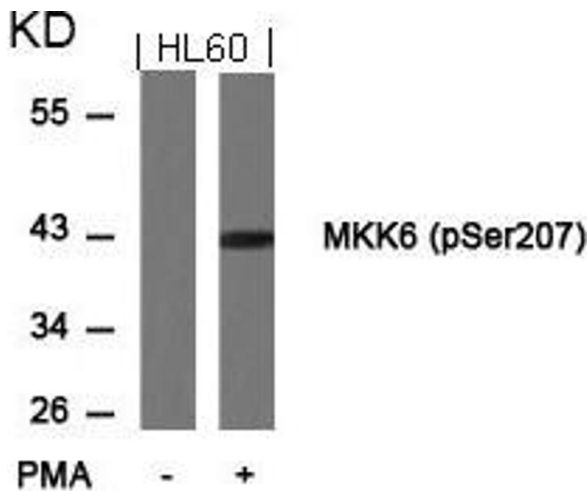
Handling

Format:	Liquid
Buffer:	Supplied at 1.0 mg/mL in phosphate buffered saline (without Mg ²⁺ and Ca ²⁺), pH 7.4, 150 mM NaCl, 0.02 % sodium azide and 50 % glycerol.
Preservative:	Sodium azide
Precaution of Use:	This product contains Sodium azide: a POISONOUS AND HAZARDOUS SUBSTANCE which should be handled by trained staff only.
Storage:	-20 °C,-80 °C
Storage Comment:	Upon receipt, store at -20°C or -80°C. Avoid repeated freeze.



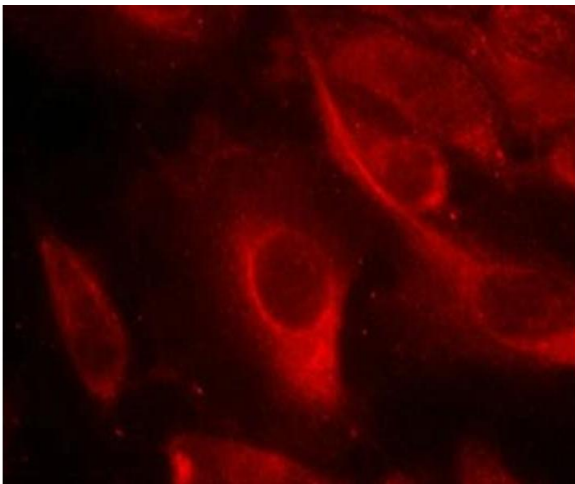
Immunohistochemistry

Image 1. Immunohistochemical analysis of paraffin-embedded human breast carcinoma tissue using MKK6(Phospho-Ser207) Antibody(left) or the same antibody preincubated with blocking peptide(right).



Western Blotting

Image 2. Western blot analysis of extracts from HL60 cells untreated or treated with PMA using MKK6(Phospho-Ser207) Antibody.



Immunofluorescence

Image 3. Immunofluorescence staining of methanol-fixed HeLa cells showing cytoplasmic staining using MKK6(Phospho-Ser207) Antibody.