



[Go to Product page](#)

Datasheet for ABIN7138477  
**anti-EIF4E antibody (pSer209)**

3 Images

Overview

Quantity:	100 µL
Target:	EIF4E
Binding Specificity:	pSer209
Reactivity:	Human
Host:	Rabbit
Clonality:	Polyclonal
Conjugate:	This EIF4E antibody is un-conjugated
Application:	Western Blotting (WB), Immunohistochemistry (IHC), ELISA, Immunofluorescence (IF)

Product Details

Immunogen:	Peptide sequence around phosphorylation site of serine 209 (S-G-S(p)-T-T) derived from Human eIF4E.
Isotype:	IgG
Cross-Reactivity:	Human, Mouse, Rat
Purification:	Antibodies were produced by immunizing rabbits with synthetic phosphopeptide and KLH conjugates. Antibodies were purified by affinity-chromatography using epitope-specific phosphopeptide. Non-phospho specific antibodies were removed by chromatography using

Target Details

Target:	EIF4E
Alternative Name:	EIF4E ( <a href="#">EIF4E Products</a> )

## Target Details

---

**Background:** Background:  
Recognizes and binds the 7-methylguanosine-containing mRNA cap during an early step in the initiation of protein synthesis and facilitates ribosome binding by inducing the unwinding of the mRNAs secondary structures.

Li BD, et al. (1998) *Ann Surg*, 227(5): 756-763  
Altmann M, et al. (1989) *Nucleic Acids Res*, 17(18): 7520  
De Gregorio E, et al. (2001) *RNA*, 7(1): 106-113  
Gu W, et al. (2004) *Nucleic Acids Res*, 32(15): 4448-4461

Aliases: AUTS19 antibody, CBP antibody, eIF 4E antibody, eIF 4F 25 kDa subunit antibody, EIF 4F antibody, eIF-4E antibody, eIF-4F 25 kDa subunit antibody, eIF4E antibody, EIF4E1 antibody, EIF4EL1 antibody, EIF4F antibody, Eukaryotic translation initiation factor 4 E antibody, Eukaryotic translation initiation factor 4E antibody, Eukaryotic translation initiation factor 4E like 1 antibody, IF4E\_HUMAN antibody, Messenger RNA Cap Binding Protein eIF 4E antibody, MGC111573 antibody, mRNA cap binding protein antibody, mRNA cap-binding protein antibody

---

**UniProt:** [P06730](#)

---

**Pathways:** [BCR Signaling](#)

## Application Details

---

**Application Notes:** WB:1:500-1:1000, IHC:1:50-1:100, IF:1:100-1:200,

---

**Restrictions:** For Research Use only

## Handling

---

**Format:** Liquid

---

**Buffer:** Supplied at 1.0 mg/mL in phosphate buffered saline (without Mg<sup>2+</sup> and Ca<sup>2+</sup>), pH 7.4, 150 mM NaCl, 0.02 % sodium azide and 50 % glycerol.

---

**Preservative:** Sodium azide

---

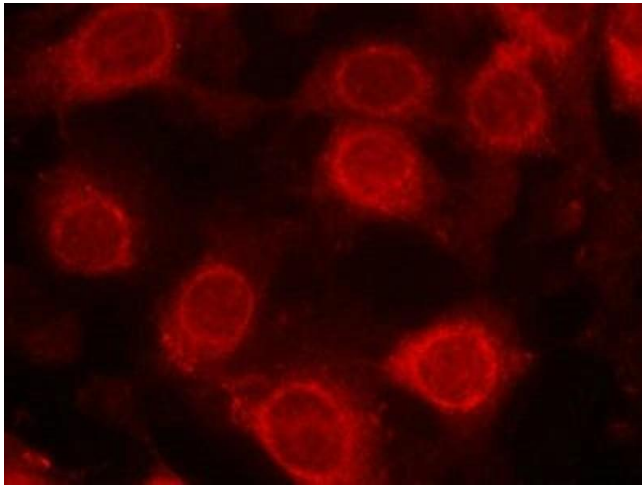
**Precaution of Use:** This product contains Sodium azide: a POISONOUS AND HAZARDOUS SUBSTANCE which should be handled by trained staff only.

---

**Storage:** -20 °C, -80 °C

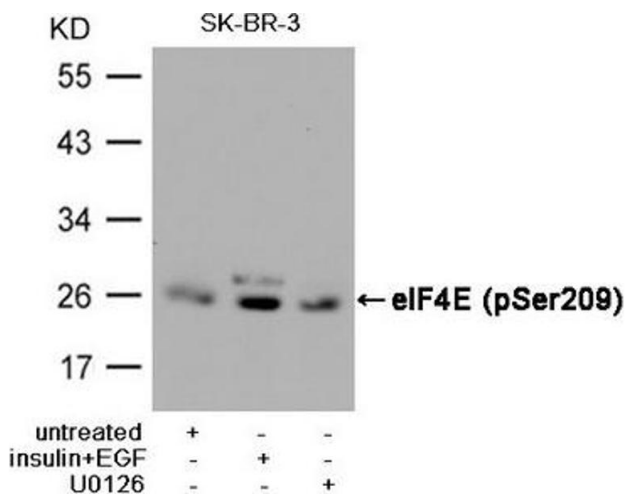
---

**Storage Comment:** Upon receipt, store at -20°C or -80°C. Avoid repeated freeze.



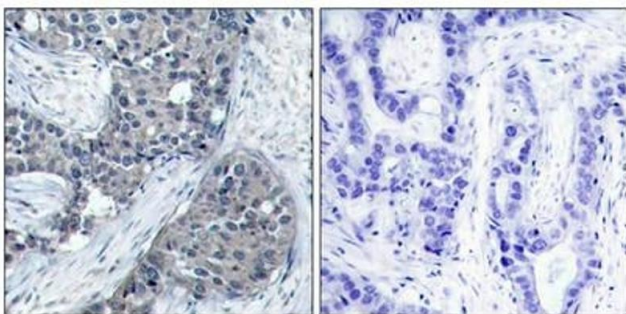
### Immunofluorescence

**Image 1.** Immunofluorescence staining of methanol-fixed MCF cells using eIF4E(Phospho-Ser209) Antibody.



### Western Blotting

**Image 2.** Western blot analysis of extracts from SK-BR-3 cells, untreated or insulin and EGF treated, and pretreated with U0126 cells, using eIF4E (Phospho-Ser209) Antibody.



### Immunohistochemistry

**Image 3.** Immunohistochemical analysis of paraffin-embedded human breast carcinoma tissue using eIF4E(Phospho-Ser209) Antibody(left) or the same antibody preincubated with blocking peptide(right).