



[Go to Product page](#)

Datasheet for ABIN7138478
anti-CEBPA antibody (pSer21)

2 Images

Overview

Quantity:	100 µL
Target:	CEBPA
Binding Specificity:	pSer21
Reactivity:	Human
Host:	Rabbit
Clonality:	Polyclonal
Conjugate:	This CEBPA antibody is un-conjugated
Application:	Western Blotting (WB), ELISA, Immunohistochemistry (IHC)

Product Details

Immunogen:	Peptide sequence around phosphorylation site of Serine 21 (L-Q-S(p)-P-P) derived from Human C/EBP-alpha.
Isotype:	IgG
Cross-Reactivity:	Human, Mouse, Rat
Purification:	Antibodies were produced by immunizing rabbits with synthetic phosphopeptide and KLH conjugates. Antibodies were purified by affinity-chromatography using epitope-specific phosphopeptide. Non-phospho specific antibodies were removed by chromatography using

Target Details

Target:	CEBPA
Alternative Name:	CEBPA (CEBPA Products)

Target Details

Background: Background: C/EBP is a DNA-binding protein that recognizes two different motifs: the CCAAT homology common to many promoters and the enhanced core homology common to many enhancers. Takashi Akasaka, Blood, Apr 2007, 109: 3451 - 3461. Carolina Gillio-Meina, Biol Reprod, May 2005, 72: 1194 - 1204. Raphaël M?vier, Mol. Endocrinol., Nov 2001, 15: 1953. Neoncheol Jung, Eur. J. Biochem., Oct 2000, 267: 6180.

Aliases: Apoptotic cysteine protease antibody, Apoptotic protease Mch 5 antibody, C/EBP alpha antibody, C/ebpalpha antibody, CAP4 antibody, Caspase 8 precursor antibody, CBF-A antibody, CCAAT Enhancer Binding Protein alpha antibody, CCAAT/enhancer binding protein (C/EBP), alpha antibody, CCAAT/enhancer-binding protein alpha antibody, CEBP antibody, CEBP A antibody, CEBP alpha antibody, Cebpa antibody, CEBPA_HUMAN antibody, FADD homologous ICE/CED 3 like protease antibody, FADD like ICE antibody, FLICE antibody, ICE like apoptotic protease 5 antibody, ICE8 antibody, MACH antibody, MCH5 antibody, MORT1 associated CED 3 homolog antibody

UniProt: [P49715](#)

Pathways: [Brown Fat Cell Differentiation](#), [Positive Regulation of fat Cell Differentiation](#)

Application Details

Application Notes: WB:1:500-1:1000, IHC:1:50-1:100,

Restrictions: For Research Use only

Handling

Format: Liquid

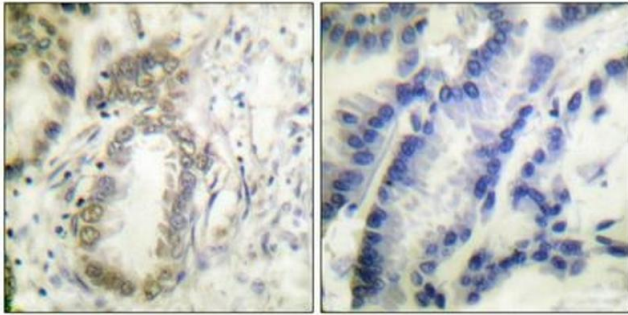
Buffer: Rabbit IgG in phosphate buffered saline (without Mg²⁺ and Ca²⁺), pH 7.4, 150 mM NaCl, 0.02 % sodium azide and 50 % glycerol.

Preservative: Sodium azide

Precaution of Use: This product contains Sodium azide: a POISONOUS AND HAZARDOUS SUBSTANCE which should be handled by trained staff only.

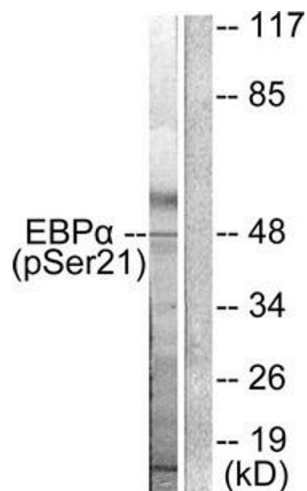
Storage: -20 °C, -80 °C

Storage Comment: Upon receipt, store at -20°C or -80°C. Avoid repeated freeze.



Immunohistochemistry

Image 1. Immunohistochemical analysis of paraffin-embedded human colon carcinoma tissue using C/EBP- α (phospho-Ser21) antibody (left) or the same antibody preincubated with blocking peptide (right).



Western Blotting

Image 2. Western blot analysis of extracts from HepG2 cells treated with EGF using C/EBP- α (phospho-Ser21) Antibody. The lane on the right is treated with the antigen-specific peptide.