

Datasheet for ABIN7138483
anti-CDC25C antibody (pSer216)[Go to Product page](#)

3 Images

Overview

Quantity:	100 µL
Target:	CDC25C
Binding Specificity:	pSer216
Reactivity:	Human
Host:	Rabbit
Clonality:	Polyclonal
Conjugate:	This CDC25C antibody is un-conjugated
Application:	Western Blotting (WB), ELISA, Immunohistochemistry (IHC), Immunofluorescence (IF)

Product Details

Immunogen:	Peptide sequence around phosphorylation site of serine 216 (S-P-S(p)-M-P) derived from Human cdc25C.
Isotype:	IgG
Cross-Reactivity:	Human
Purification:	Antibodies were produced by immunizing rabbits with synthetic phosphopeptide and KLH conjugates. Antibodies were purified by affinity-chromatography using epitope-specific phosphopeptide. Non-phospho specific antibodies were removed by chromatography using

Target Details

Target:	CDC25C
Alternative Name:	CDC25C (CDC25C Products)

Target Details

Background: Background: cdc25C is highly conserved during evolution and it plays a key role in the regulation of cell division. The encoded protein is a tyrosine phosphatase and belongs to the Cdc25 phosphatase family. It directs dephosphorylation of cyclin B-bound CDC2 and triggers entry into mitosis. It is also thought to suppress p53-induced growth arrest. Multiple alternatively spliced transcript variants of this gene have been described, however, the full-length nature of many of them is not known.

Toyoshima-Morimoto F. et al. (2002) EMBO Rep. 3(4): 341-348.

Ferguson AM. et al. (2005) Mol Cell Biol. 25(7): 2853-2860.

Donzelli M. et al. (2003) EMBO Rep. 4(7): 671-677.

Chen F. et al. (2002) Proc Natl Acad Sci U S A. 99(4): 1990-1995.

Aliases: CDC 25 antibody, Cdc 25C antibody, CDC25 antibody, CDC25C antibody, Cell division cycle 25 homolog C antibody, Cell division cycle 25C antibody, Cell division cycle 25C protein antibody, Dual specificity phosphatase Cdc25C antibody, M phase inducer phosphatase 3 antibody, M-phase inducer phosphatase 3 antibody, Mitosis inducer CDC25 antibody, MPIP3 antibody, MPIP3_HUMAN antibody, Phosphotyrosine phosphatase antibody, PPP1R60 antibody, protein phosphatase 1, regulatory subunit 60 antibody

UniProt: [P30307](#)

Pathways: [Cell Division Cycle, M Phase](#)

Application Details

Application Notes: WB:1:500-1:1000, IHC:1:50-1:100, IF:1:100-1:200,

Restrictions: For Research Use only

Handling

Format: Liquid

Buffer: Supplied at 1.0 mg/mL in phosphate buffered saline (without Mg²⁺ and Ca²⁺), pH 7.4, 150 mM NaCl, 0.02 % sodium azide and 50 % glycerol.

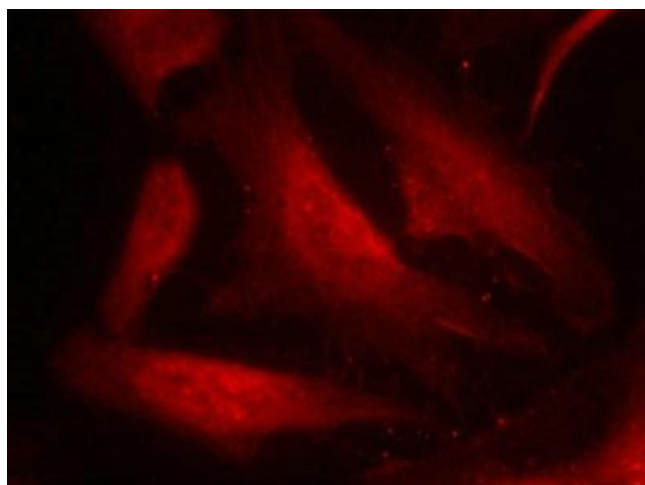
Preservative: Sodium azide

Precaution of Use: This product contains Sodium azide: a POISONOUS AND HAZARDOUS SUBSTANCE which should be handled by trained staff only.

Storage: -20 °C, -80 °C

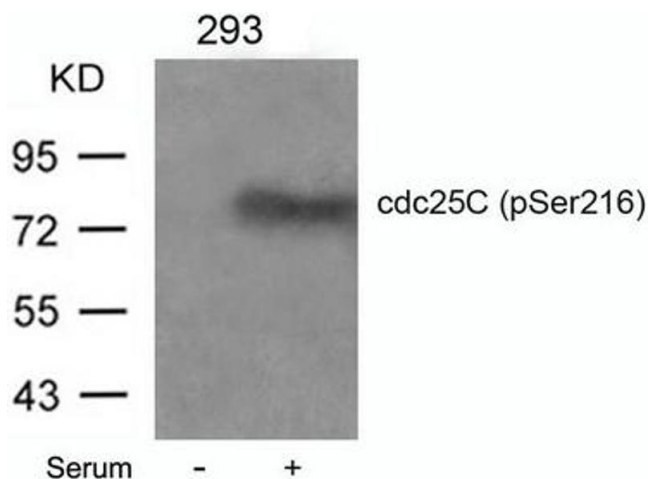
Storage Comment: Upon receipt, store at -20°C or -80°C. Avoid repeated freeze.

Images



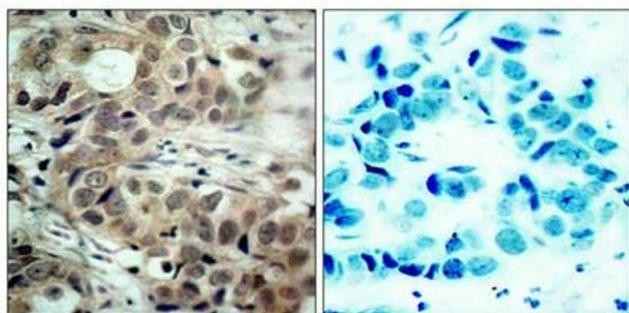
Immunofluorescence

Image 1. Immunofluorescence staining of methanol-fixed HeLa cells using cdc25C(Phospho-Ser216) Antibody.



Western Blotting

Image 2. Western blot analysis of extracts from 293 cells untreated or treated with serum using cdc25C(Phospho-Ser216) Antibody.



Immunohistochemistry

Image 3. Immunohistochemical analysis of paraffin-embedded human breast carcinoma tissue using cdc25C(Phospho-Ser216) Antibody(left) or the same antibody preincubated with blocking peptide(right).